

... beautiful products built to last.

REPLACING OR CLEANING & LUBRICATING THE: BODY HOUSING AND/OR SPOUT HUB

ON A SPRAY-SPOUT SERIES KITCHEN FAUCET

317-1005 SPRAY-SPOUT

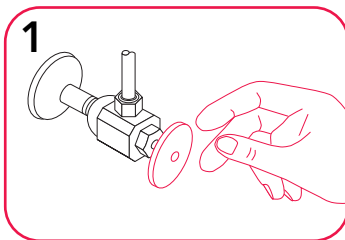
317-1010 DELUXE SPRAY-SPOUT

317-1099 EURO SPRAY-SPOUT

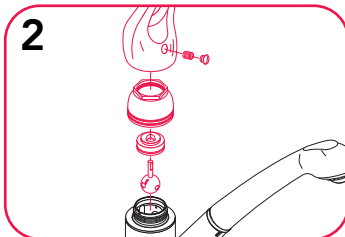
317-1095 EURO2 SPRAY-SPOUT



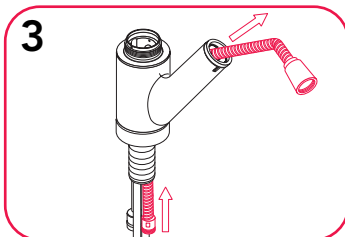
READ THESE INSTRUCTIONS CAREFULLY BEFORE PROCEEDING YOU MAY ALSO NEED YOUR "INSTRUCTION GUIDE"



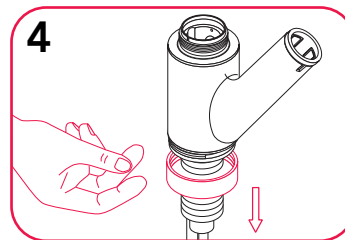
1) Turn off the water under sink. Cover the sink drain to prevent the loss of small parts. Remove your Spray-Spout series faucet from the sink, taking care not to damage it. If you need additional assistance with the removal of your faucet, consult your "Instruction Guide".



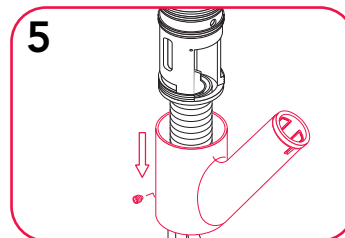
2) Remove the Handle (1), Cap (5) and Adjusting Ring (4), Cam (6) and Cam Packing (7) and Ball Assembly (8) from the faucet. Consult your "Instruction Guide" for details on how to properly remove these components. If there is excessive mineral build-up on the Cap (5) and Adjusting Ring (4), you may need to soak the faucet in white vinegar to dissolve the build-up.



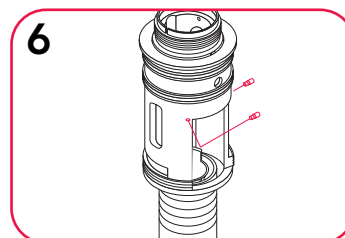
3) Remove the Spout Head (36) and Flex Hose (32) from the faucet. Disconnect it from the Pipe Adapter (29) under the sink. Consult your "Instruction Guide" for details on how to properly deal with this connection. Pull the Flex Hose (32) up and out through the Spout Hub (12). The Flex Hose (32) will likely get stuck when the fitting on the bottom of the hose (the end that connects to the Pipe Adapter (29)) goes about 2" up into the Hose Guide (23), where the hose fitting needs to turn to follow the angle of the Spout Hub (12). Use a large screwdriver or something similar to insert into the bottom of the Hose Guide (23). With a firm jerk, push the Flex Hose (32) up with the screwdriver, to force it around the turn.



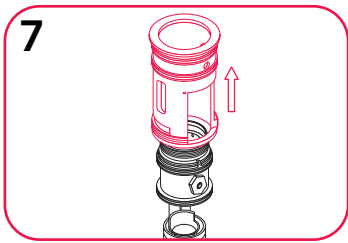
4) By hand, unscrew the Base (21) (under the bottom Packing Ring (19)) counter-clockwise, unthreading it from the Body Housing (10). Slide the Base (21) and the Mounting Shaft (20) along with the plastic Packing Ring (19) down the copper Inlet Tubes (34). If there is excessive mineral build-up on the Base (21) and/or Mounting Shaft (20), you may need to soak the faucet in white vinegar to dissolve the build-up.



5) Remove the Hub Set Screw (13) on the back of the Spout Hub (12). Slide the Spout Hub (12) down the copper Inlet Tubes (34). If there is excessive mineral build-up on the faucet, you may need to soak the faucet in white vinegar to dissolve the build-up.



6) Remove the two Pins (11) from the Body Housing (10) (older generation Spray-Spout series faucets may have only one Pin (11) by pushing them out. If there is excessive mineral build-up on the faucet, you may need to soak the faucet in white vinegar to dissolve the build-up.



7) Slide the Body Housing (10) up and off the Brass Body (16).

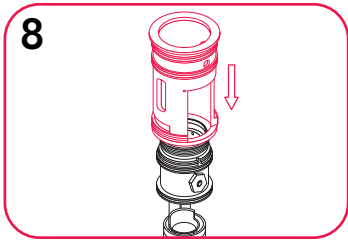
Replacing the Body Housing Only:
Proceed to Step # 8.

Replacing the Spout Hub:

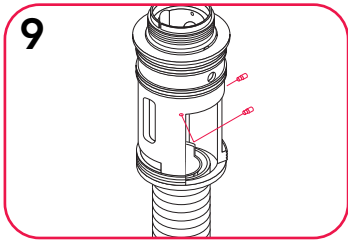
Slide the old Spout Hub (12) up and off the Brass Body (16). Slide the new Spout Hub (12) down over the Brass Body (16) and down the copper Inlet Tubes (34). Proceed to Step # 8.

Cleaning & Lubricating the Body Housing:

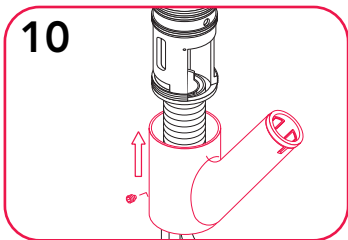
Inspect the two black O-Rings (9) on the Body Housing (10) (older generation Spray-Spout series faucets may have only one O-Ring (9) for damage. If they are damaged, they may need to be replaced. If there is any mineral build-up on the O-Ring(s) (9) and/or Body Housing (10), soak it in white vinegar to dissolve the build-up. Once the minerals are gone, rub silicone grease on the O-Ring(s) (9) to lubricate them. Proceed to Step # 8.



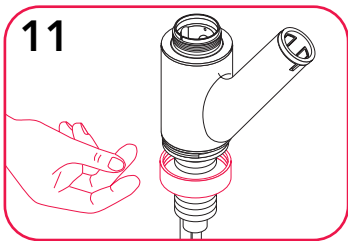
8) Slide the Body Housing (10) down onto the Brass Body (16). Make sure the plastic alignment tab slides into the groove on the front of the Brass Body (16).



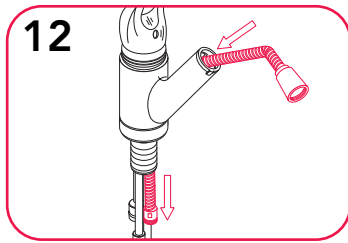
9) Replace the Pin(s) (11) in the Body Housing (10) (older generation Spray-Spout series faucets may have only one Pin (11)) by pushing them in. Make sure they are flush with the outside of the Body Housing (10).



10) Slide the Spout Hub (12) back up the copper Inlet Tubes (34) and onto the Body Housing (10) and make sure it is properly aligned. Replace the Hub Set Screw (13) on the back of the Spout Hub (12) flush with the outside of the Spout Hub (12). With the Hub Set Screw (13) installed and properly aligned, the Spout Hub (12) will swing from side-to-side approx. 45° either direction on the Body Housing (10).



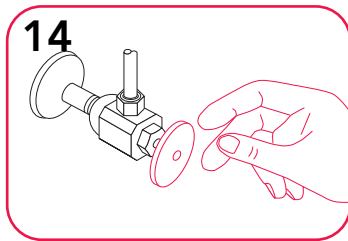
11) Slide the Base (21) and the Mounting Shaft (20) along with the plastic Packing Ring (19) up the copper Inlet Tubes (34) and onto the bottom of the faucet. By hand, screw the Base (21) clockwise, threading it onto the Body Housing (10). Do not over tighten the Base (21) onto the Body Housing (10).



12) Replace the Flex Hose (32) into the faucet. Slide the Flex Hose (32) down through the Spout Hub (12) from above. The Flex Hose (32) will likely get stuck when the fitting on the bottom of the hose (the end that connects to the Pipe Adapter (29)) goes down about 1" into the Spout Hub (12), where the hose fitting needs to turn to follow the angle of the Spout Hub (12). With a slight jerk, push the Flex Hose (32) into the Spout Hub (12), to force it around the turn.



13) Replace the Handle (1), Cap (5) and Adjusting Ring (4), Cam (6) and Cam Packing (7) and Ball Assembly (8) into the faucet. Consult your "Instruction Guide" for details on how to properly install these components.



14) Reinstall your Spray-Spout series faucet onto the sink. Consult your "Instruction Guide" for the proper installation procedure. Turn on the water under sink.

**Model # 317-1095 pictured (partial).
Different models / generations will vary.**

1) Handle	029012NP
2) Set Screw	008102
3) Blue/Red Cap	028020
4) Adjusting Ring	104001
5) Cap	103008NP
6) Cam	201000
7) Cam Packing	102000N
8) Ball Assembly	040004
9) O-Ring	004045
10) Body Housing	301012KP
11) Pin	003000
12) Spout Hub	300201NP
13) Hub Set Screw	008026
14) Seat	101000N
15) Spring	005000
16) Brass Body	002009N
17) O-Ring	004057
18) I.V.B. Assembly	-----
19) Packing Ring	207001KP
20) Mounting Shaft	035172
21) Base	034001NP
22) O-Ring	004069
23) Hose Guide	227001
24) Rubber Washer	010021
25) Metal Washer	013010Ni
26) Lock Nut	009046
27) Lock Nut Screws	008045
28) O-Ring	004002N
29) Pipe Adapter	021004N
30) Pipe Adapter Screw	008048
31) Hose Washer	010035N
32) Flex Hose	511004NCP
33) Weight/Screws	504079
34) Inlet Tubes	002009N
35) Hose Nest	126003KP
36) Spout Head	523047NPN

