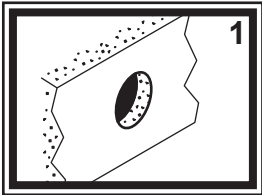


# SHURflo<sup>®</sup> Marine Grade Faucets

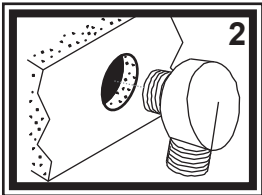
## INSTALLATION INSTRUCTIONS

*OEM Version*

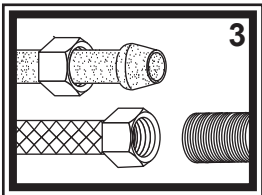
**Attention Manufacturers:**  
Please include this Installation  
Instruction sheet with your  
Owner's Documentation.



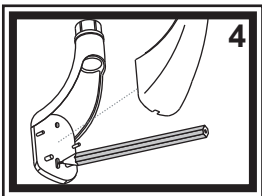
1) Hold elbow on the wall where desired. Make sure to leave enough room for the hose to hang freely and extend into the shower. Drill 1" hole in the bulkhead in the desired location.



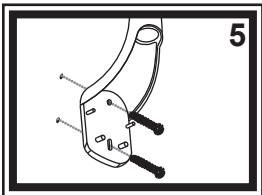
2) Slip nipple on the back of the elbow through the hole in the bulkhead.



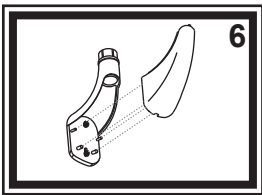
3) Connect water supply lines (not provided) to the nipple. Wrap the end of the nipple with Teflon (Plumber's) tape. Follow the appropriate steps depending on your water supply lines. If you have a pre-assembled water supply hose with a threaded connector, simply screw on supply hose. If you have plastic water lines with formed ends, water line will seat partially up into the plastic nipple. Connect by tightening the coupling nut. We do NOT suggest using sweat fittings as they are prone to blow-outs.



4) Remove the bracket cover on the post. Hold the bottom post on the wall where desired. Note, "top" and "bottom" posts are identical. Either post can be used as "top" or "bottom". With a pencil, lightly trace a circle around the two screw wholes in the post. Remove the post.



5) Mount the post as shown. For mounting into fiberglass or other solid surface, drill a 1/8" starter hole and attach the bracket to the wall.



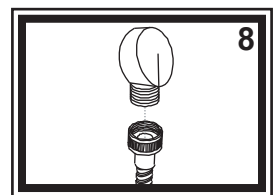
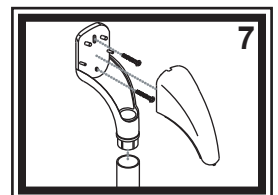
6) Slide the bracket cover back onto the post. Be sure the alignment pins line up properly.

7) For the top post, merely slide the bar onto the bottom post and hold the top post at the correct spot. NOTE: Mount the top post "in" tightly so that there is no up and down movement of the bar. USE A BUBBLE LEVEL TO INSURE THAT THE BAR IS STRAIGHT. Repeat steps 4-6.

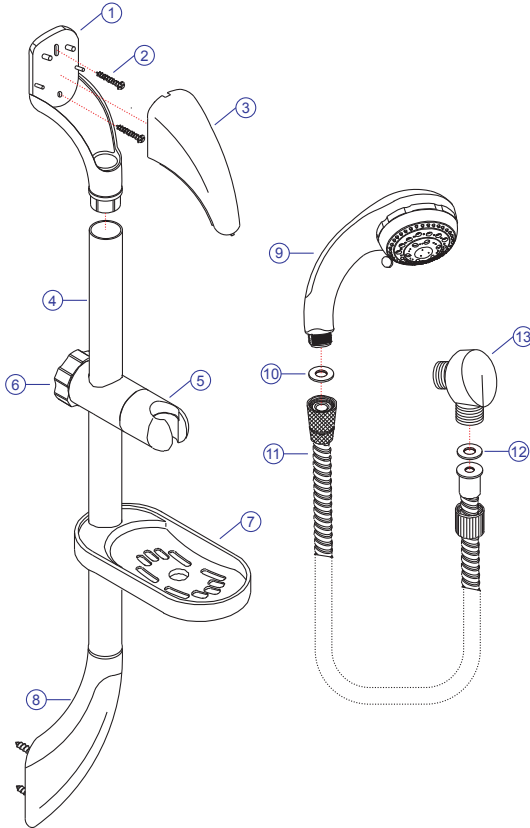
8) Attach your 1/2" hose to the connector on the elbow. Turn the water supply on. While water is running, check all connections for leaks. Connections may need re-tightening.

9) To adjust the height of the holder rotate the knob 1/4 turn to unlock, adjust to desired location and re-lock. You can also tilt the holder by rotating its head.

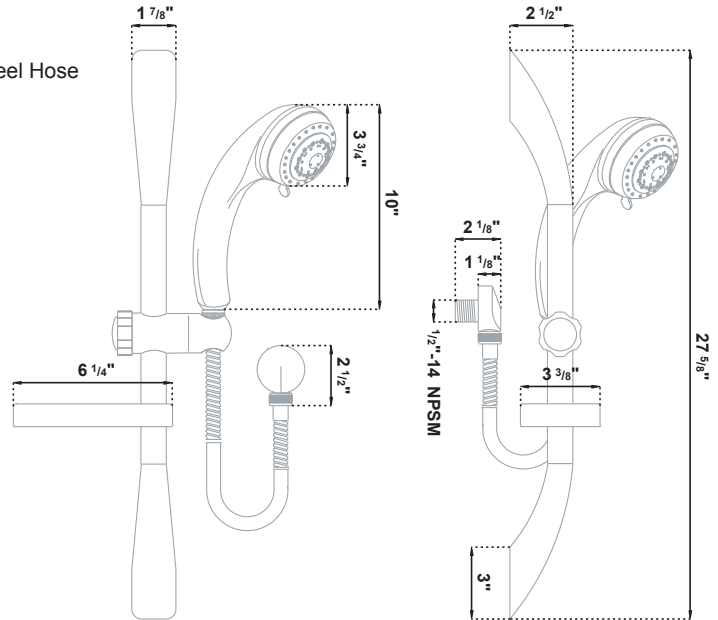
**CAUTION: THIS IS NOT A SAFETY DEVICE.  
DO NOT USE AS A GRAB BAR.**



### Parts



- 1) Bracket Post
- 2) Mounting Screws
- 3) Bracket Cover
- 4) Bar
- 5) Holder
- 6) Knob
- 7) Soap Dish
- 8) Bottom Bracket
- 9) Sprayer Head
- 10) Washer
- 11) 72" Stainless Steel Hose
- 12) Washer
- 13) Elbow



### PROPER FINISH CARE

Your new faucet or accessory is protected by a clear-coat. To clean it, you only need to wipe it with a damp, soft cloth. NEVER use any abrasive cleaners, steel wool, or chemicals, as they will harm the finish and void your warranty. If the accessory will be installed in a salt-air environment (boat exterior), regular cleaning with gentle soap and carnauba wax will prolong the life of the finish.

### LIMITED WARRANTY

SHURflo Marine Grade Faucets & Accessories are guaranteed to be free from material and workmanship defects under normal use and service for a period of three (3) years from the date of manufactured vessel for all indoor applications and two (2) years from the date of manufactured vessel for all outdoor applications. This limited warranty will not apply to faucets or accessories that were improperly installed, misapplied, or incompatible with components not manufactured by SHURflo. Faucet failure due to foreign debris is not covered under the terms of this limited warranty. SHURflo will not warrant any faucet that is physically damaged, or altered outside the SHURflo factory. Warranty claims may be resolved by a SHURflo service center. All returns are to be shipped with charges pre-paid. Package all returns carefully. SHURflo will not be responsible for freight damage incurred during shipping to a service center. SHURflo's obligation under this warranty policy is limited to the repair or replacement of the faucets & accessories. Faucets or accessories found not defective (under the terms of this limited warranty) are subject to charges to be paid by the returnee for the testing and packaging of "tested good" units. Warranty returns will be shipped on a freight allowed basis. SHURflo reserves the right to choose the method of transportation. SHURflo is not responsible nor will it reimburse for labor necessary to remove and reinstall a faucet or accessory, if found defective. This warranty is only a representation of the complete Marine Products Limited Warranty outlined by Service Bulletin #1050.



**SHURflo®**  
Pentair Water



#### SHURflo, LLC Headquarters\*

Mailing Address: 5900 Katella Avenue, Cypress, California 90630  
Shipping Address/UPS: 5900 Katella Avenue, Bldg. C, Cypress, California 90630  
Toll Free (800) 854-3218 Phone (562) 795-5200 Fax (562) 795-7564

#### SHURflo, LLC East

52748 Park Six Court, Elkhart, Indiana 46514-5427  
Toll Free (800) 854-3218 Phone (574) 262-0478 Fax (574) 264-2169

#### SHURflo Europe / Middle East

SHURflo Limited  
Unit 5, Sterling Park, Gatwick Road, Crawley, West Sussex, RH10 2QT, UK  
Phone 44-(0)-1293-424-000 Fax 44-(0)-1293-421-880

[www.shurflo.com](http://www.shurflo.com)

\* SHURflo reserves the right to update specifications, prices, or make substitutions.