

SHURflo[®] Marine Grade Faucets

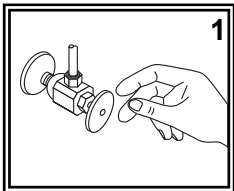
INSTALLATION INSTRUCTIONS

Your new SHURflo Marine Grade Faucet will give you years of trouble-free performance. Thank you for choosing SHURflo Marine Grade Faucets. Please read these instructions carefully before installing your new faucet. If you have any additional questions about the installation of this faucet, please feel free to contact one of our friendly customer service representatives at 1-800-854-3218.

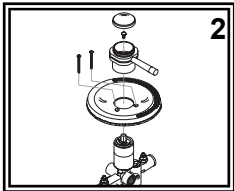


135-0405-CG

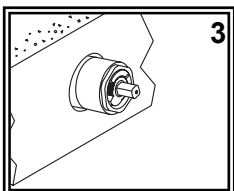
Pisces
Pressure Balanced
Single Handle Shower
Chrome/Gold



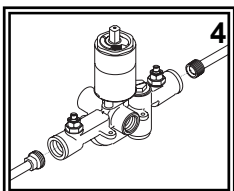
(1) Turn off the water supply to your existing faucet (this procedure will vary depending on the specific plumbing system installed on your boat). Remove old shower set.



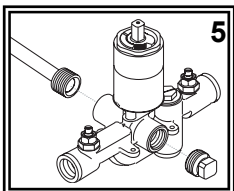
(2) Remove handle and wall plate from valve assembly. Remove the handle cap and handle screw. Slide handle off the cartridge. Remove the two wall plate screws. Slide wall plate off the trim sleeve. Make sure the wall plate gasket stays inside the back of the wall plate.



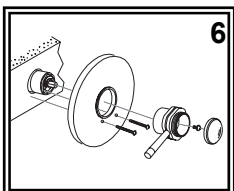
(3) From the back side of the bulkhead, slide the valve assembly through the hole in the bulkhead. Note that the brass valve is stamped with "UP". Make sure that the "UP" is on the top side when positioned.



(4) Connect hot/cold water supply lines (not provided) to the inlet tubes. The inlet tubes are the 1/2" NPT-Female tubes on the left and right sides of the valve. Wrap the fittings with Teflon (Plumber's) tape. This procedure will vary depending on the specific plumbing system installed on your boat.

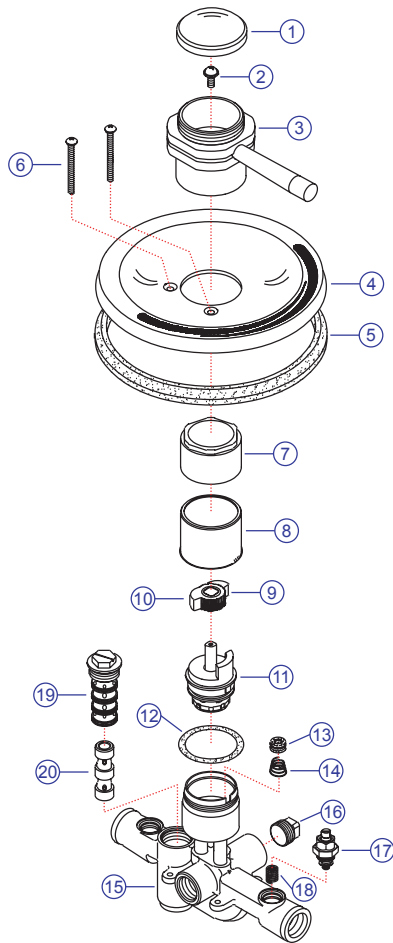


(5) Connect 1/2" NPT water line from the shower head or bulkhead elbow (not included) to the shower head (top) port. Wrap the fitting on the water line with Teflon (Plumber's) tape. Thread tub port plug into the tub port (bottom) (if you are not using a tub spout with this installation). Wrap the plug with Teflon (Plumber's) tape.



(6) Replace handle and wall plate onto valve assembly. Slide wall plate back onto the trim sleeve and insert the two screws. Be careful not to damage the wall plate gasket. Tighten the handle screw and replace the handle cap. It may be necessary to secure the valve inside the wall to prevent movement. This procedure will vary depending on the specific design of your boat. Suggestions: Use the screw-holes molded into the valve. Use strapping material. Wedge item in place.

(7) After installation is complete, turn the water supply back on and allow both hot and cold water to run for at least one full minute. Make sure both shut-off valves are in the open position. While water is running, check all connections for leaks. Connections may need re-tightening. You may also want to adjust the max. temperature dials to allow for more or less hot water to pass.



Parts

- 1) Handle Cap
- 2) Handle Screw
- 3) Pisces Handle
- 4) Wall Plate
- 5) Wall Plate Gasket
- 6) Wall Plate Screws
- 7) Retainer Ring
- 8) Trim Sleeve
- 9) Max. Temperature Dial A
- 10) Max. Temperature Dial B
- 11) Cartridge
- 12) O-Ring
- 13) Seat
- 14) Spring
- 15) Valve
- 16) Tub Port Plug
- 17) Shut-Off Valve
- 18) Shut-Off Valve Spring
- 19) Pressure Balance Housing
- 20) Pressure Balance Spool

**From the galley to the head...
You can enjoy the entire Pisces
family throughout your boat!**



PROPER FINISH CARE:

Your new faucet is protected by a clear-coat. To clean it, you only need to wipe it with a damp, soft cloth. NEVER use any abrasive cleaners, steel wool, or chemicals, as they will harm the finish and void your warranty. If the faucet will be installed in a salt-air environment (boat exterior), regular cleaning with gentle soap and carnauba wax will prolong the life of the finish.

LIMITED WARRANTY

SHURflo Marine Grade Faucets & Accessories are guaranteed to be free from material and workmanship defects under normal use and service for a period of five (5) years from the date of purchase. This limited warranty will not apply to faucets or accessories that were improperly installed, misapplied, or incompatible with components not manufactured by SHURflo. Faucet failure due to foreign debris is not covered under the terms of this limited warranty. SHURflo will not warrant any faucet that is physically damaged or altered outside the SHURflo factory. Warranty claims may be resolved by a SHURflo service center. All returns are to be shipped with charges pre-paid. Package all returns carefully. SHURflo will not be responsible for freight damage incurred during shipping to a service center. SHURflo's obligation under this warranty policy is limited to the repair or replacement of the faucets & accessories. Faucets or accessories found not defective (under the terms of this limited warranty) are subject to charges to be paid by the returnee for the testing and packaging of "tested good" units. Warranty returns will be shipped on a freight allowed basis. SHURflo reserves the right to choose the method of transportation. SHURflo is not responsible nor will it reimburse for labor necessary to remove and reinstall a faucet or accessory if found defective. This warranty is only a representation of the complete Marine Products Limited Warranty outlined by Service Bulletin #1050.

**SHURflo reserves the right to update specifications, prices, or make substitutions.*



SHURflo*
5900-A Katella Ave.
Cypress, CA 90630
(562) 795-5200 (800) 854-3218
FAX (562) 795-7564
Shipping: 5900-C Katella Ave.
Cypress, CA 90630

SHURflo East
52748 Park Six Court
Elkhart, IN 46514-5427
(574) 262-0478 (800) 762-8094
FAX (574) 264-2169
<http://www.shurflo.com>

SHURflo Ltd.*
Unit 5 Sterling Park
Gatwick Road, Crawley
West Sussex, RH10 2QT
United Kingdom
+44 1293 424000
FAX +44 1293 421880

