

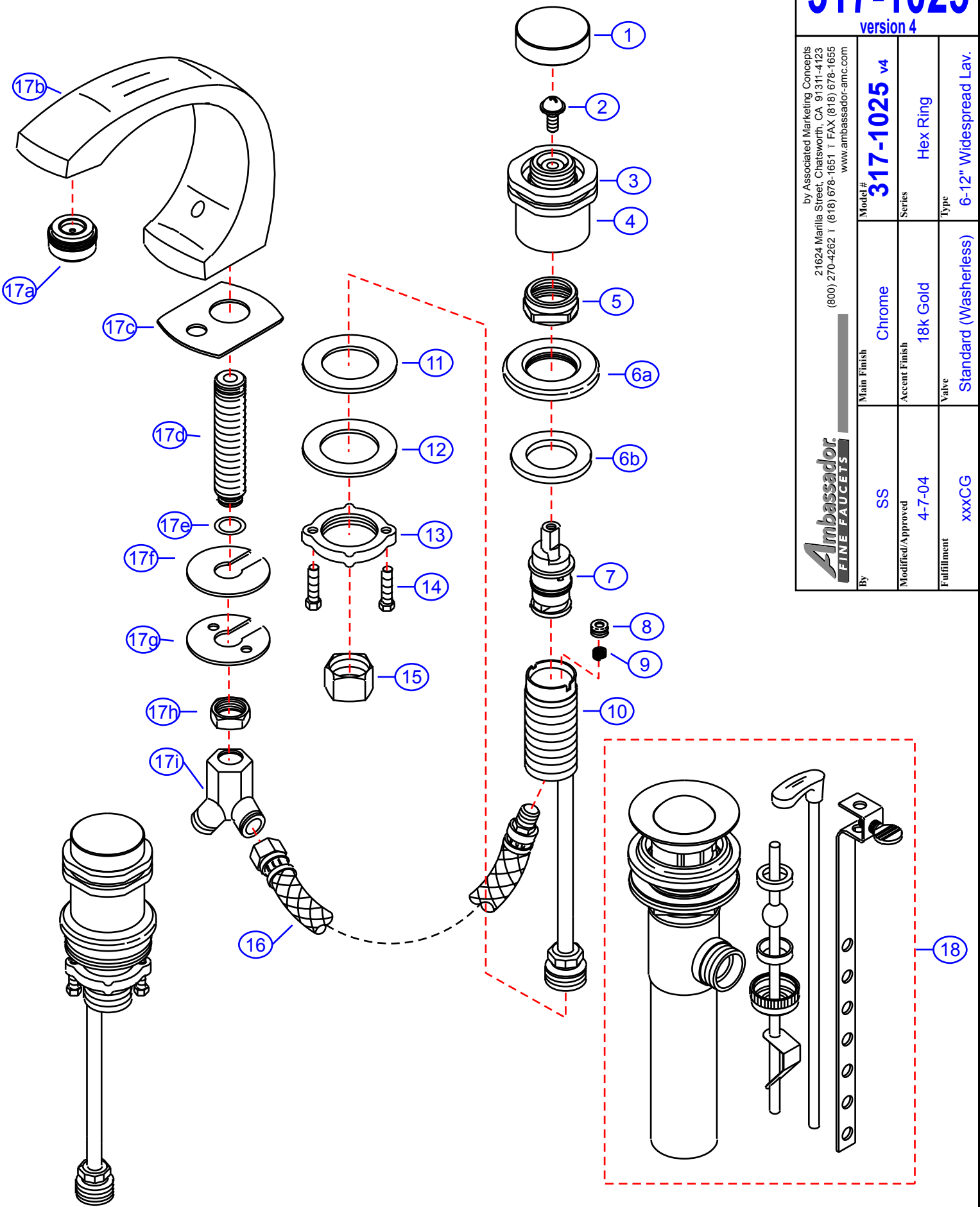
317-1025

version 4

by Associated Marketing Concepts
21624 Marilla Street, Chatsworth, CA 91311-4123
(800) 270-4262 | (818) 678-1651 | FAX (818) 678-1655
www.ambassador-amc.com

Ambassador
FINE FAUCETS

Model #	317-1025 v4		
Series	Hex Ring		
Type	6-12" Widespread Lav.		
Main Finish	Chrome	By	SS
Accent Finish	18k Gold	Modified/Approved	4-7-04
Valve	Standard (Washerless)	Fulfillment	xxxCG



317-1025 v4



Hex Ring 6-12" Widespread Lav- Std/CG

#	Description	Quantity	Part #	Finish
1	Cap	2	E-206002CP	Chrome
2	Screw	2	E-008000	Metal
3	Trim Ring	2	E-218005GP	Gold
4	Handle Canopy	2	E-215003HCP	Chrome
5	Retainer Nut	2	E-016002CP	Chrome
6	Escutcheon (Assembled)	2	EA-663201GP	Gold
6a	Escutcheon	2	E-204000GP*	Gold
6b	Gasket	2	E-010020	Rubber
7	Cartridge	2	E-507006N	Plastic/Brass
8	Seat	2	E-101000N	Rubber
9	Spring	2	E-005000	Metal
10	Valve Body	2	E-002057N	Brass
11	Rubber Washer	2	E-010017	Rubber
12	Metal Washer	2	E-013018NI	Metal
13	Lock Nut	2	E-009012	Brass
14	Screw	4	E-008045	Metal
15	Connector Nuts	2	E-009016	Brass
16	Hose	2	E-105007N	Hose
17	Spout (Assembled)	1	EA-666506CG	Chrome/Gold
17a	Aerator	1	E-500013NGP	Gold
17b	Spout	1	E-132079NCP*	Chrome
17c	Gasket	1	E-060092	Foam
17d	Shank	1	E-014011N*	Brass
17e	O-Ring	1	E-004026N	Rubber
17f	Rubber Spout Washer	1	E-058094	Rubber
17g	Metal Spout Washer	1	E-013006NI	Metal
17h	Spout Nut	1	E-009015	Brass
17i	"Y" Connector	1	E-015004N	Brass
18	Drain Kit (see "Drains" for parts)	1	EA-505006CG	Chrome/Gold

* Grayed parts are not available individually. "Assembled" item required.

by Associated Marketing Concepts
 21624 Marilla Street, Chatsworth, CA 91311-4123
 (800) 270-4262 * (818) 678-1651 * FAX (818) 678-1655
www.ambassador-amc.com