

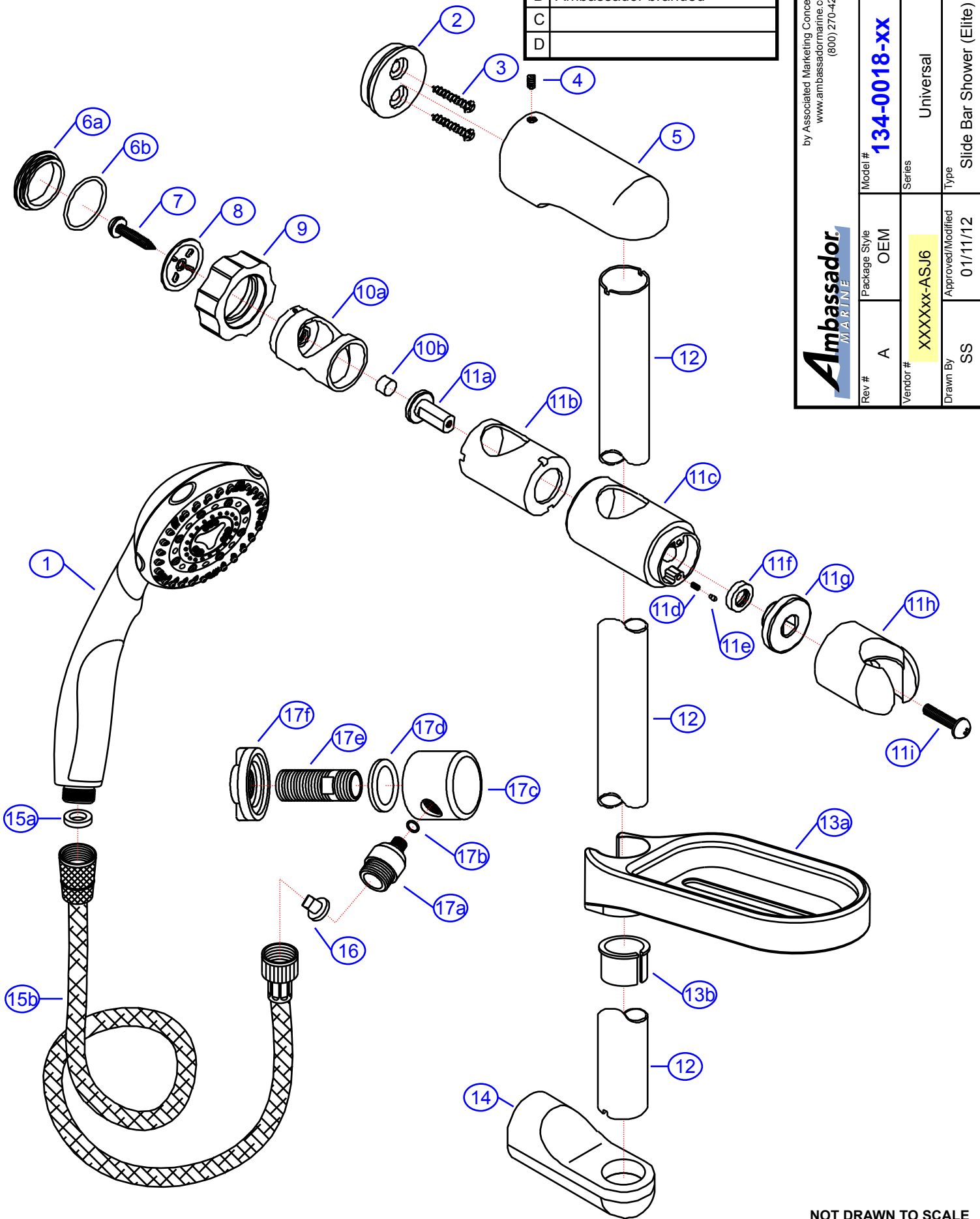
Rev. Change	
A	SHURflo branded
B	Ambassador branded
C	
D	

134-0018-xx

by Associated Marketing Concepts
www.ambassadormarine.com
(800) 270-4262

Ambassador
MARINE

Rev #	A	Package Style	OEM	Model #	134-0018-xx
Vendor #	XXXXxx-ASJ6	Series	Universal	Approved/Modified	01/11/12
Drawn By	SS	Type	Slide Bar Shower (Elite)		



NOT DRAWN TO SCALE

134-0018-xx

Universal
 Slide Bar Shower (Elite)
 Rev. B



#	Description	Part #	Finish Code Suffix (i.e. EA-123456CP)				Qty
			CP	CG	CY		
1	8-Function Sprayer	EA-S2284401	CP	CG	CY		1
2	Bracket	E-112319					2
3	Mounting Screw	E-075022					4
4	Set Screw	E-008003					2
5	Post (Top)	E-112046	CP	CP	CP		1
6	Cap Assembly	G-A90722	CP	CP	CP		1
6a	Cap	E-028085*	CP	CP	CP		1
6b	O-Ring	E-063008					1
7	Screw	E-075095					1
8	Disk	E-112331					1
9	Universal Slide Bar Knob	E-069097	CP	GP	YP		1
10	Slide Bar Sleeve Assembly	EA-663751					1
10a	Sleeve	E-052010*					1
10b	Friction Pad	E-068115*					1
11	Slide Bar Bracket Assembly	EA-112202	CP	CP	CP		1
11a	Adapter	E-077109*	CP	CP	CP		1
11b	Housing	E-032035*					1
11c	Body	E-112282*	CP	CP	CP		1
11d	Spring	E-005024*					2
11e	Pin	E-003006*					2
11f	Washer	E-060080					1
11g	Coupler	E-112041					1
11h	Holder	E-112281*	CP	CP	CP		1
11i	Screw	E-008083*					1
12	Bar	E-112660	CP	CP	CP		1
13	Soap Dish Assembly	EA-255149	CP	CP	CP		1
13a	Soap Dish	E-255148*	CP	CP	CP		1
13b	Locking Ring	E-126227*					1
14	Post (Bottom)	E-112047	CP	CP	CP		1
15	6' Rubber Coated Hose Assembly	130-0031-__	CK	CK	CK		1
15a	Washer	E-058007					1
15b	6' Rubber Coated Hose	E-xxxx*	CP	CP	CP		1
16	Anti-Siphon Device	E-112313					1
17	90 Degree Elbow Assembly	130-0015-__	CP	CG	CY		1
17a	Hose Connector	E-039197*	CP	CP	CP		1
17b	O-Ring	E-004004					1
17c	Connector Body	E-039198*	CP	GP	YP		1
17d	Gasket	E-010097					1
17e	Pipe Nipple	E-017247					1
17f	Lock Nut	E-009007					1

* - Part is not available individually. "Assembled" item is required.