

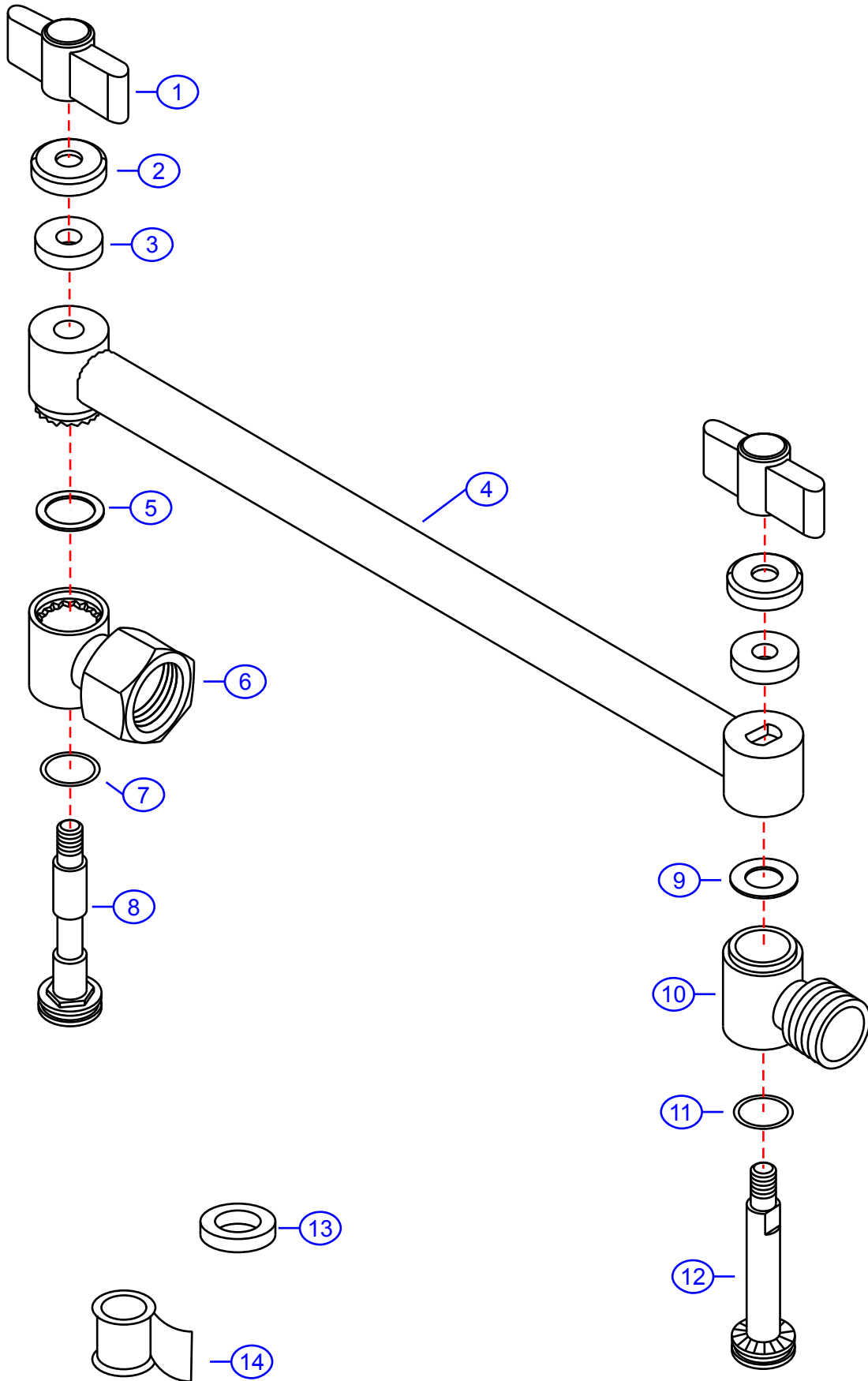
8010-Y

version 2

by Associated Marketing Concepts
 21624 Marilla Street, Chatsworth, CA 91311-4123
 (800) 270-4262 | (818) 678-1651 | FAX (818) 678-1655
 www.ambassador-amc.com



| | | |
|-------------------|-----------------------|--|
| Model # | 8010-Y v2 | |
| Series | Adjustable Shower Arm | |
| Type | Shower Head | |
| Main Finish | Chrome | |
| Accent Finish | Dura-Life Finish | |
| Valve | NA | |
| By | SS | |
| Modified/Approved | 9-29-04 | |
| Fulfillment | A558216CY | |



8010-Y v2



9" Adjustable Shower Arm- CY

| # | Description | Quantity | Part # | Finish |
|----|------------------|----------|-------------|------------------|
| 1 | Wing Nut | 2 | E-029087YP | Dura-Life Finish |
| 2 | Cap | 2 | E-045008CP | Chrome |
| 3 | Washer | 2 | E-058022 | Rubber |
| 4 | Arm | 1 | E-517007CP* | Chrome |
| 5 | O-Ring | 1 | E-048091 | Rubber |
| 6 | Female Connector | 1 | E-057090CP | Chrome |
| 7 | O-Ring | 2 | E-048091 | Rubber |
| 8 | Bolt | 1 | E-125032CP | Chrome |
| 9 | Packing Ring | 1 | E-200030 | Plastic |
| 10 | Male Connector | 1 | E-057041CP | Chrome |
| 11 | O-Ring | 1 | E-048091 | Rubber |
| 12 | Bolt | 1 | E-125023CP | Chrome |
| 13 | Washer | 1 | E-058007 | Rubber |
| 14 | Teflon Tape | 1 | E-203000 | Tape |

* Grayed parts are not available individually. "Assembled" item required.