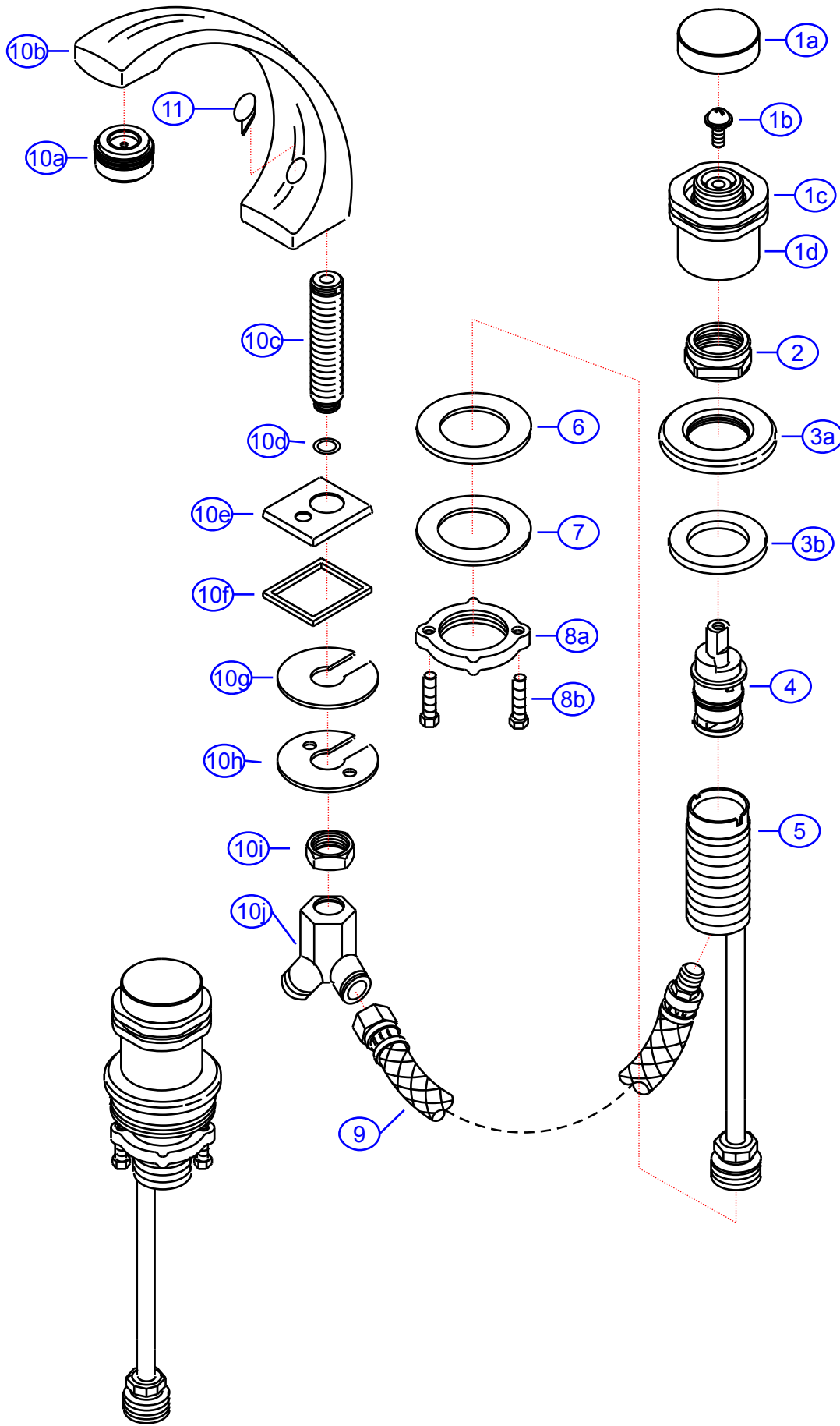


# 132-0414-xx

**SHURflo**  
*First in Fluid Innovation™*  
 SHURflo Marine Grade Faucets  
 5900 Katiella Ave., Cypress, CA 90630  
 (562) 795-5200 • FAX (562) 795-7554  
 www.shurflo.com

Model #	<b>132-0414-xx</b>		
Package Style	OEM	Series	Pisces
Rev #	-	Vendor #	FM0A2001xx-ASJ8
Drawn By	SS	Modified/Approved	1/17/05
Type	4" Mini-Spread Faucet		



132-0414-xx

Pisces  
4" Mini-Spread Faucet  
Rev. -



#	Description	Part #	Finish					Qty
			CG					
1	Pisces Handle	EA-506040H	CG					2
1a	Handle Cap	E-206001	CP					2
1b	Screw	E-008000						2
1c	Trim Ring	E-218004	GP					2
1d	Canopy	E-215002H	CP					2
2	Retainer Nut	E-016002	CP					2
3	Escutcheon (Assembled)	EA-663201	GP					2
3a	Escutcheon	E-204000*	GP					2
3b	Gasket	E-010020						2
4	Ceramic Disk Cartridge	E-507003NH						2
5	Valve Body	E-002027N						2
6	Rubber Washer	E-010017						2
7	Metal Washer	E-013018	NI					2
8	Lock Nut w/Screws	EA-663066						2
8a	Lock Nut	E-009012						2
8b	Screw	E-008045						4
9	Hose	E-105007N						2
10	Spout (Assembled)	EA-666507	CG					1
10a	Aerator	E-500013N	GP					1
10b	Spout	E-132077N*	CP					1
10c	Shank	E-014011N*						1
10d	O-Ring	E-004026N						1
10e	Spout Base	E-303006	GP					1
10f	Spout Base Gasket	E-010041						1
10g	Rubber Spout Washer	E-058094						1
10h	Metal Spout Washer	E-013006	NI					1
10i	Spout Nut	E-009015						1
10j	"Y" Connector	E-015004N						1
11	Lift-Rod Hole Plug	E-028206	GR					1

\* - Grayed parts are not available individually. "Assembled" item is required.

Prepared Exclusively For  
SHURflo Marine Grade Faucets