

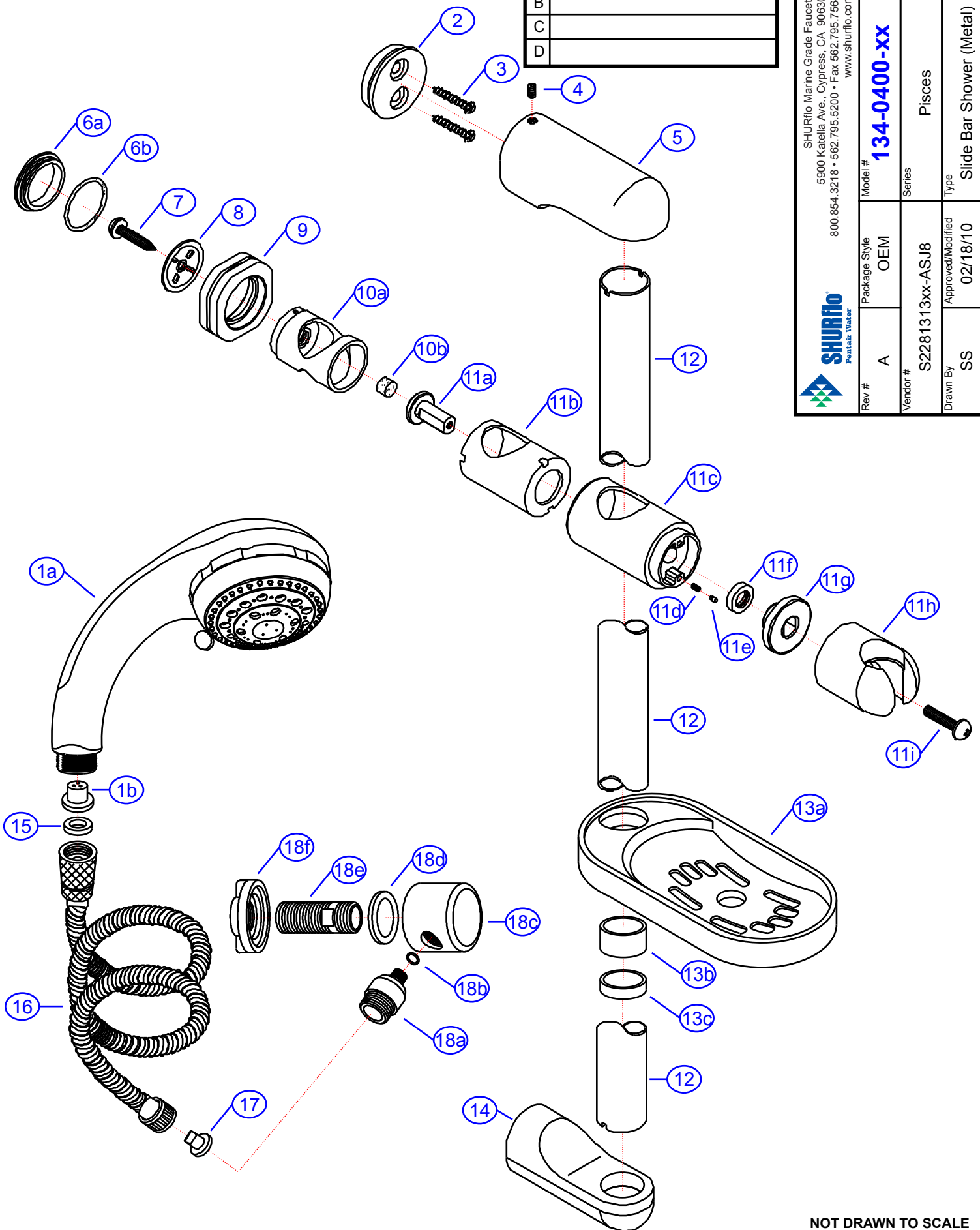
# 134-0400-xx

SHURflo Marine Grade Faucets  
 5900 Katella Ave., Cypress, CA 90630  
 800.854.3218 • 562.795.5200 • Fax 562.795.7564  
 www.shurflo.com



Rev #	A	Package Style	OEM	Model #	<b>134-0400-xx</b>
Vendor #	S22813	Approved/Modified	02/18/10	Series	Pisces
Drawn By	SS	Type	Slide Bar Shower (Metal)		

Rev.	Change
A	Original
B	
C	
D	



NOT DRAWN TO SCALE

134-0400-xx

Pisces  
Slide Bar Shower (Metal)  
Rev. A



#	Description	Part #	Finish					Qty
			CG					
1	8-Function Sprayer Assembly	EA-S2281307	CG					1
1a	8-Function Spray Head	E-537145*	CG					1
1b	Flow Restrictor	E-112301						1
2	Bracket	E-112319						2
3	Screws	E-075022						4
4	Set Screw	E-008003						2
5	Post (Top)	E-112046	CP					1
6	Cap Assembly	G-A90722	CP					1
6a	Cap	E-028085*	CP					1
6b	O-Ring	E-063008						1
7	Screw	E-075095						1
8	Disc	E-112331						1
9	Knob	E-069185	GP					1
10	Sleeve Assembly	EA-663751						1
10a	Sleeve	E-052010*						1
10b	Friction Pad	E-068115*						1
11	Slide Bar Bracket Assembly	EA-112202	CP					1
11a	Adapter	E-077109*	CP					1
11b	Housing	E-032035*						1
11c	Body	E-112282*	CP					1
11d	Spring	E-005024*						2
11e	Pin	E-003006*						2
11f	Washer	E-060080						1
11g	Coupler	E-112041*						1
11h	Holder	E-112281*	CP					1
11i	Screw	E-008183*						1
12	Bar	E-025016	CP					1
13	Soap Dish Assembly	EA-255149	CP					1
13a	Soap Dish	E-xxxx*	CP					1
13b	Gasket	E-xxxx*						1
13c	Locking Ring	E-xxxx*						1
14	Post (Bottom)	E-112047	CP					1
15	Washer	E-058007						1
16	Hose	E-134036						1
17	Anti-Siphon Device	E-112313						1
18	90 Degree Elbow Assembly	130-0015-**	GC					1
18a	Hose Connector	E-039197*	CP					1
18b	O-Ring	E-004004						1
18c	Connector Body	E-039198*	GP					1
18d	Gasket	E-010097						1
18e	Pipe Nipple	E-017247						1
18f	Lock Nut	E-009007						1
								1

\* - Part is not available individually. "Assembled" item is required.

\*\* - Assembly is in-stock at SHURflo and must be shipped directly from SHURflo's distribution center.

Prepared Exclusively For  
SHURflo Marine Grade Faucets