



INSTALLATION INSTRUCTIONS

Thank you for choosing Ambassador Marine.

Your new Ambassador Marine faucet, shower, sprayer or accessory will give you years of trouble-free performance. Please read these instructions carefully before installing your new item. If you have any additional questions about the installation of this product, feel free to contact a customer service representative at 1.800.270.4262.



130-0011-CP (OEM)

131-0011-CP (Retail)

Universal
Soap Dispenser
Chrome

IF REPLACING AN EXISTING ITEM:

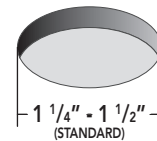
If removing a faucet, turn off the water supply to the faucet (this procedure will vary depending on the specific plumbing system installed on your boat). Cover the sink drain to prevent any small parts or debris from falling in. Remove your existing faucet and cap water lines. Clean sink/counter-top area in preparation for new item.

IF ADDING NEW HOLE(S) TO SINK/COUNTER-TOP:

See "Installation Hole Requirement" to the right, for this model. Check to ensure there is enough room for the bottle under the sink/counter-top. Drill hole, using proper bit for sink/counter-top surface and diameter.

Installation Hole Requirement

This unit requires a minimum of this/these hole(s)



Your existing sink/counter-top may have additional hole(s) per-drilled, which may not be required for this installation. If so, you may be able to utilize a deck/cover plate or an additional accessory (i.e. soap dispenser) to utilize the extra hole(s). We offer a variety of deck/cover plates and soap dispensers to coordinate with your faucet and decor.

INSTALLING YOUR NEW AMBASSADOR MARINE UNIT:

NEEDED / HELPFUL TOOLS



Safety Glasses



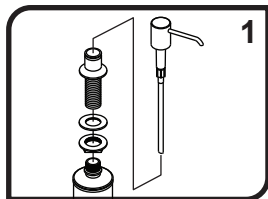
Adjustable Wrench



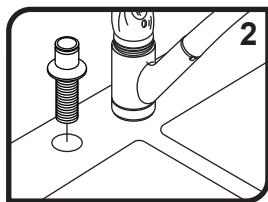
Pliers



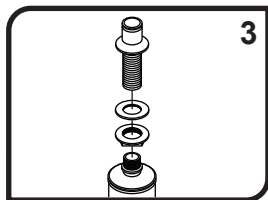
Clean Rags



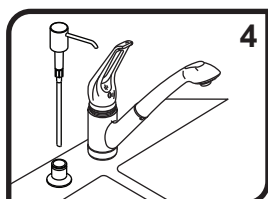
1) Lift the Nozzle and Pump Assembly out from the top of the Body Assembly. Unscrew the Bottle and Mounting Nut and slide the rubber Washer off the bottom of the Body Assembly.



2) From the top of the sink/counter-top, place the Body Assembly through the hole in your sink.

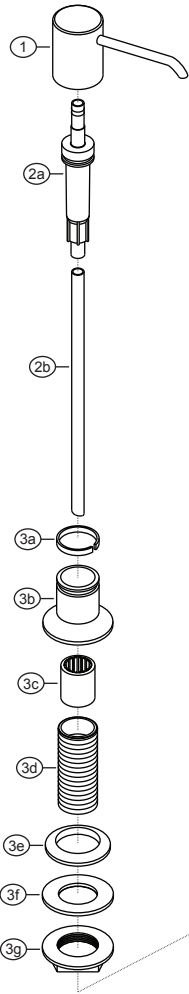


3) From under the sink, slide the rubber Washer and thread the Mounting Nut onto the Mounting Shaft and hand-tighten. Confirm the proper position of the Body Assembly from above the sink. Tighten the Mounting Nut with an adjustable wrench or pliers. It may be necessary to re-adjust the Body Assembly position by slightly loosening the Mounting Nut, adjusting to the desired location, then re-tightening the Mounting Nut. Screw the plastic Bottle into the bottom of the Mounting Shaft.



4) To fill (or refill) the soap dispenser, you do not need to remove the bottle from under the sink/counter-top. Simply lift the Nozzle and plastic Pump Assembly out through the top side. Pour in liquid soap (or hand lotion). Replace Pump Assembly and Nozzle. NOTE: If soap (or hand lotion) is too thick, pump may not function properly, dilute with water.

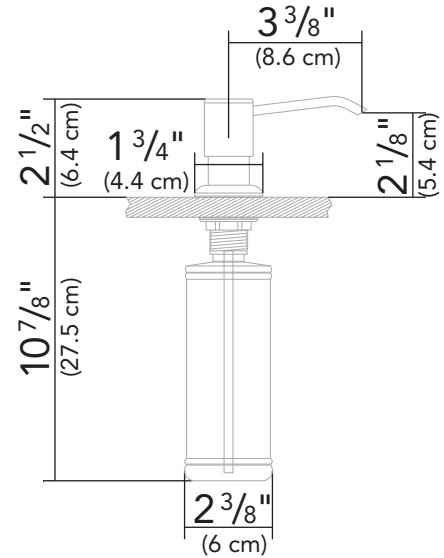
Parts



- 1) Nozzle
- 2) Pump Assembly
 - 2a) Pump
 - 2b) Straw
- 3) Body Assembly
 - 3a) Collar
 - 3b) Body
 - 3c) Sleeve
 - 3d) Mounting Shaft
 - 3e) Gasket
 - 3f) Washer
 - 3g) Mounting Nut
- 4) Bottle

130-0011-CP (OEM)

131-0011-CP (Retail)



All dimensions \pm $1/16$ "
Some components may not be drawn to scale

PROPER FINISH CARE

Your new faucet or accessory is protected by a marine grade finish. To clean it, you only need to wipe it with a damp, soft cloth. NEVER use any abrasive cleaners, steel wool, or chemicals (including alcohol or ammonia), as they will harm the finish and void your warranty. If the item will be installed in a salt-air environment (boat exterior), regular cleaning with gentle soap and carnauba wax will prolong the life of the finish.

LIMITED WARRANTY

Ambassador Marine faucets and accessories are guaranteed to be free from material and workmanship defects under normal use and service for a period of five (5) years from the date of purchase. This warranty will not apply to faucets or accessories that were improperly installed, misapplied, or incompatible with components not manufactured by Ambassador. Faucet failures due to foreign debris is not covered under the terms of this limited warranty. Ambassador will not warrant any faucet or accessory that is physically damaged, or altered outside the Ambassador factory.

Returns are to be shipped postage prepaid to Ambassador Marine's service center at: Ambassador Marine, 1173 Calle Suerte, Camarillo, CA 93012. A Return Authorization Number is required and must be clearly visible on the shipping carton.

Absolutely no credit or payment will be allowed for consumers on any item deemed defective. Ambassador Marine's obligation is limited to the repair or replacement of the defective item only, at Ambassador Marine's sole discretion. All returns will be examined and/or tested under Ambassador Marine test criteria. Replacements will be shipped freight prepaid.

This limited warranty is in lieu of all other warranties, expressed or implied, and no other person is authorized to give any other warranty or assume obligation or liability on Ambassador Marine's behalf. Ambassador Marine shall not be liable for any labor, damages, or other expenses, nor shall Ambassador Marine be liable for any indirect, incidental or consequential damages of any kind incurred by the use or sale of any defective product.

This limited warranty covers Marine Products sold or distributed in the United States and Canada only. Customers who purchase Ambassador Marine products sold by distributors in other countries must consult their local distributors for their warranty policy. **This warranty is only a representation of the complete Ambassador Marine warranty outlined on the Ambassador Marine website and/or catalog.**



Visit our web site at www.ambassadormarine.com

Ambassador Marine reserves the right to update specifications, change prices, or make substitutions without notice.

1173 Calle Suerte • Camarillo, CA 93012

800.270.4262 • 805.482.0053 • Fax 805.482.0056

www.ambassadormarine.com • info@ambassadormarine.com

Rev. 11/20

© 2020 Ambassador Marine, Inc., All Rights Reserved