

INSTALLATION INSTRUCTIONS

Thank you for choosing Ambassador Marine.

Your new Ambassador Marine faucet, shower, sprayer or accessory will give you years of trouble-free performance. Please read these instructions carefully before installing your new item. If you have any additional questions about the installation of this product, feel free to contact a customer service representative at 1.800.270.4262.

132-1724-__
Aidack
Wall-Mount Faucet

Available Color/Finish Suffix Codes
-CP Chrome



ANY SUFFIX FOLLOWED WITH "-R" OR "-W" INDICATES - RETAIL PACKAGED

IF REPLACING AN EXISTING FAUCET:

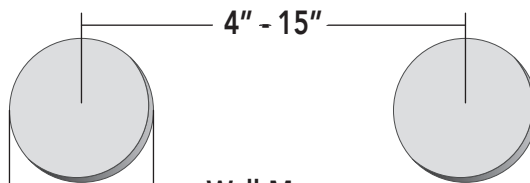
Turn off the water supply to your existing faucet (this procedure will vary depending on the specific plumbing system installed on your boat). Remove your existing faucet, taking care not to damage your existing water lines. Clean bulkhead (wall) area in preparation for new faucet.

IF ADDING NEW HOLE TO BULKHEAD:

See "Installation Hole Requirement" to the right, for this model. Check to ensure there is enough room for the faucet, including necessary supply line(s), pull-out hose, etc. behind the bulkhead (wall). Drill hole, using proper bit for the surface material and diameter.

Installation Hole Requirement

This unit requires a minimum of this/these hole(s)

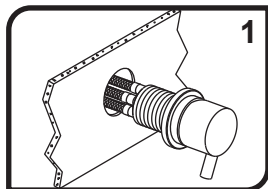


Wall-Mount

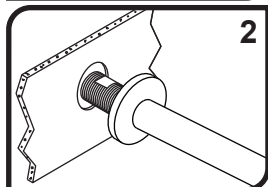
* Control valve requires 1 1/4" hole, spout requires 3/4" to 1 1/4" hole
Control valve can be installed on left or right side of spout with variable spacing

INSTALLING YOUR NEW AMBASSADOR MARINE UNIT:

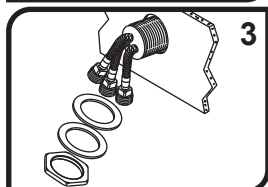
NEEDED / HELPFUL TOOLS



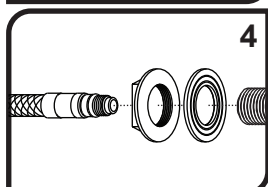
1) Remove the Mounting Nut, Metal Washer and Rubber Washer from the Valve Body, if already attached. Unscrew off the back of the Valve Body and slide off over the Connector Hoses. Verify all Connector Hoses are screwed tightly into the Valve Body. From the front side of the bulkhead, place the valve assembly through the hole, making sure the O-Ring remains recessed in the Escutcheon and forms a seal all the way around the hole.



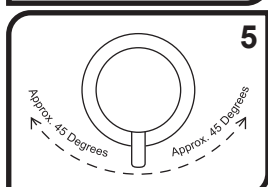
2) Remove the Rubber Washer and Mounting Nut from the Spout Assembly, if already attached. From the front side of the bulkhead, place the Spout Assembly through the hole, making sure the O-Ring remains recessed in the Escutcheon and forms a seal all the way around the hole.



3) From the back side of the bulkhead, slide the Rubber Washer, Metal Washer and Mounting Nut over the Connector Hoses and onto the Valve Body. Loosely tighten the Mounting Nut.

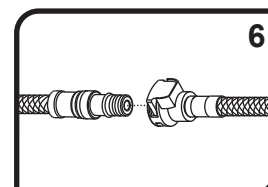


4) Slide the Rubber Washer onto Spout Assembly Coupler and loosely tighten the Mounting Nut. Firmly screw the Patch Connector Hose into the Coupler.

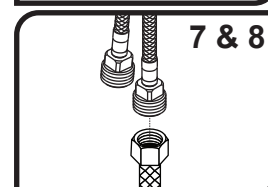


5) From the front side of the bulkhead, ensure that when the handle is in the off position (straight down) it is centered between the hot and cold side-to-side rotation and that both the valve assembly Escutcheon and the Spout Assembly Escutcheons are aligned. Firmly tighten both Mounting Nuts against the bulkhead to secure.

6) Firmly push the male quick connect fitting on the Patch Connector Hose into the female quick connect fitting on the Quick Connect Hose from the Valve Assembly, until you feel it "snap" into place. Gently, but firmly pull on the Patch Connector Hose to ensure that it is properly secured. If the quick connect fitting pulls out of the housing, repeat step while gently rotating the fitting side-to-side. If it becomes necessary to disconnect the quick connect Patch Connector Hose from the housing after it has been secured, simply press the release button on the side of the housing while pulling on the Patch Connector Hose.



7) Connect water supply lines (not provided) to the Connector Hoses (red for hot, blue for cold). Supply line will vary depending on the specific plumbing system installed on your boat. To properly connect to the faucet, supply line must be the North American 'STANDARD 1/2" FAUCET' (1/2" NPS*) connector with a washer in the female connector. Wrap the end of the Inlet Tube with plumber's (Teflon) tape. Follow the appropriate steps depending on your water supply line. If you have a per-assembled water supply hose with threaded swivel-nut connector, simply screw on supply hose. We do NOT suggest using sweat fittings as they are prone to blow-outs.

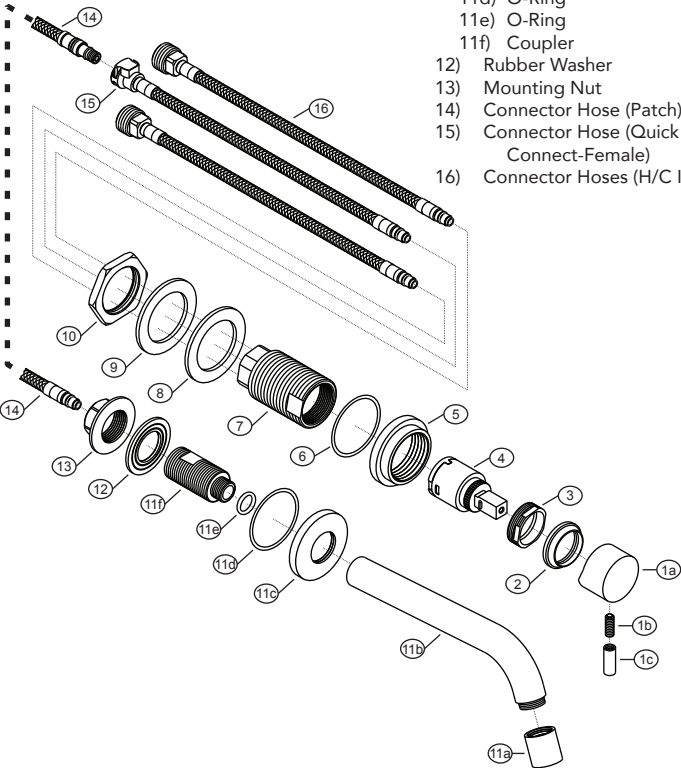


8) After installation is complete, turn the water supply back on and allow both hot and cold water to run for at least one full minute. While water is running, check all connections for leaks. Connections may need re-tightening.

Parts

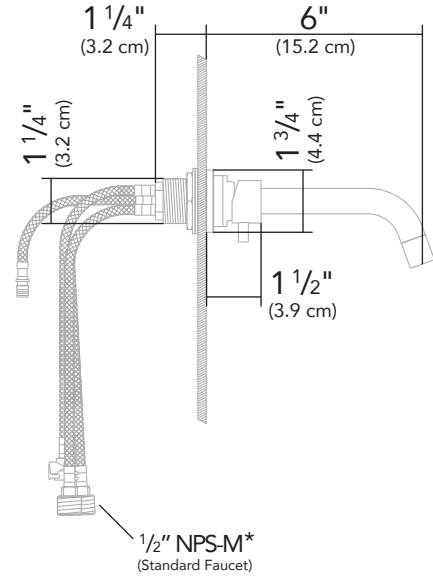
Design: Rev. A

- 1) Aidack- Handle Assembly
- 1a) Aidack- Handle Canopy
- 1b) Set Screw
- 1c) Aidack- Handle Tip
- 2) Cap
- 3) Retainer Nut
- 4) Ceramic Disc Cartridge
- 5) Escutcheon
- 6) O-Ring
- 7) Valve Body
- 8) Rubber Washer
- 9) Metal Washer
- 10) Mounting Nut
- 11) Spout Assembly
- 11a) Aerator
- 11b) Wall-Mount Spout
- 11c) Escutcheon
- 11d) O-Ring
- 11e) O-Ring
- 11f) Coupler
- 12) Rubber Washer
- 13) Mounting Nut
- 14) Connector Hose (Patch)
- 15) Connector Hose (Quick Connect-Female)
- 16) Connector Hoses (H/C Inlets)



132-1724- _ _

SEE REVERSE FOR AVAILABLE
COLOR/FINISH SUFFIX CODES



All dimensions $\pm 1/16$ "
Some components may not be drawn to scale

* Supply Connection(s) - Understanding NPS vs. NPT

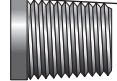
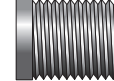
NPS = National Pipe Straight

NPT = National Pipe Tapered

(-M = Male -F = Female)

Straight Threads (Male)

Tapered Threads (Male)



Plumbing fittings are commonly referred to as "NPT", however, in reality, nearly all FAUCETS are actually "NPS". NPS is the North American "**STANDARD**" for faucets, regardless of brand, style, application, etc. Outside North America, BSP is the most commonly used standard.

Both NPS and NPT have the same thread angle, shape, and pitch (threads per inch). However, NPS threads are straight (parallel) and NPT threads are tapered (reduced).

Straight Pipe thread is commonly found on faucets, showerheads, hose connections and fittings. Tapered Pipe thread is commonly found on pipe ends, nipples and fittings (i.e. couplings, elbows, tees, etc.). Straight Pipe threads need a gasket or o-ring to create a seal. Both styles require sealant or plumber's tape for optimal seal. While NPS and NPT threads will engage, they do not seal properly with each other.

PROPER FINISH CARE

Your new faucet or accessory is protected by a marine grade finish. To clean it, you only need to wipe it with a damp, soft cloth. NEVER use any abrasive cleaners, steel wool, or chemicals (including alcohol or ammonia), as they will harm the finish and void your warranty. If the item will be installed in a salt-air environment (boat exterior), regular cleaning with gentle soap and carnauba wax will prolong the life of the finish.

LIMITED WARRANTY

Ambassador Marine faucets and accessories are guaranteed to be free from material and workmanship defects under normal use and service for a period of five (5) years from the date of purchase. This warranty will not apply to faucets or accessories that were improperly installed, misapplied, or incompatible with components not manufactured by Ambassador. Faucet failures due to foreign debris is not covered under the terms of this limited warranty. Ambassador will not warrant any faucet or accessory that is physically damaged, or altered outside the Ambassador factory.

Returns are to be shipped postage prepaid to Ambassador Marine's service center at: Ambassador Marine, 1173 Calle Suerte, Camarillo, CA 93012. A Return Authorization Number is required and must be clearly visible on the shipping carton.

Absolutely no credit or payment will be allowed for consumers on any item deemed defective. Ambassador Marine's obligation is limited to the repair or replacement of the defective item only, at Ambassador Marine's sole discretion. All returns will be examined and/or tested under Ambassador Marine test criteria. Replacements will be shipped freight prepaid.

This limited warranty is in lieu of all other warranties, expressed or implied, and no other person is authorized to give any other warranty or assume obligation or liability on Ambassador Marine's behalf. Ambassador Marine shall not be liable for any labor, damages, or other expenses, nor shall Ambassador Marine be liable for any indirect, incidental or consequential damages of any kind incurred by the use or sale of any defective product.

This limited warranty covers Marine Products sold or distributed in the United States and Canada only. Customers who purchase Ambassador Marine products sold by distributors in other countries must consult their local distributors for their warranty policy. **This warranty is only a representation of the complete Ambassador Marine warranty outlined on the Ambassador Marine website and/or catalog.**

Ambassador
MARINE

1173 Calle Suerte • Camarillo, CA 93012
800.270.4262 • 805.482.0053 • Fax 805.482.0056
www.ambassadormarine.com • info@ambassadormarine.com

Visit our web site at www.ambassadormarine.com

Ambassador Marine reserves the right to update specifications,
change prices, or make substitutions without notice.

Rev. 02/24
© 2024 Ambassador Marine, Inc., All Rights Reserved