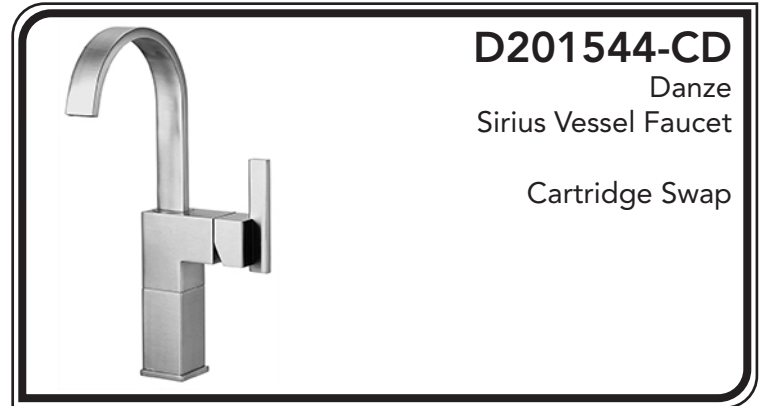


CARTRIDGE SWAP INSTRUCTIONS

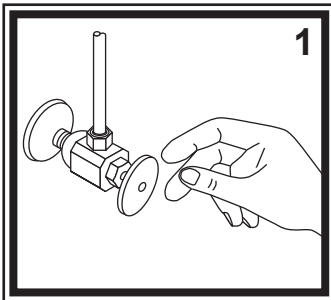
(D201544 series into D201544-CD series)

If you are experiencing issues with your Danze D201544 series faucet turning itself on by itself, from the vibration and/or jolting of your boat while underway, swapping out the current cartridge for our special "marine" application cartridge will resolve your issues. Please read these instructions carefully before installing the new cartridge to ensure proper installation. If you have any additional questions about this procedure, please feel free to contact one of our friendly customer service representatives at 800.270.4262.

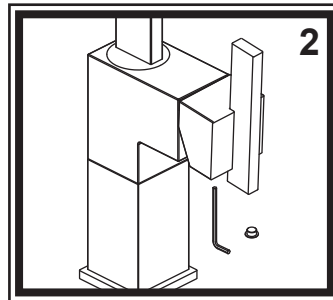


D201544-CD
Danze
Sirius Vessel Faucet
Cartridge Swap

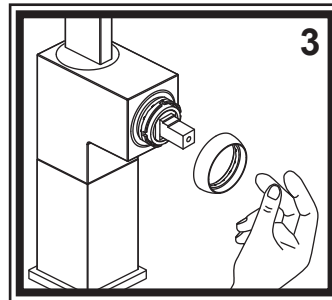
NEEDED TOOLS



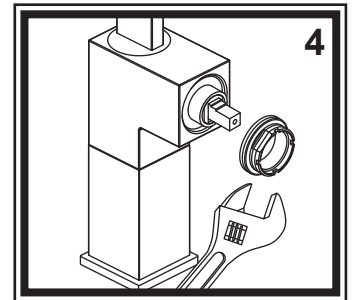
1 Turn off the water supply to the faucet (this procedure will vary depending on the plumbing system installed on your boat). Tilt the handle to the open position, which would normally allow for warm water, allowing any water inside the unit to drain out. Cover the sink drain to prevent small parts or debris from falling in.



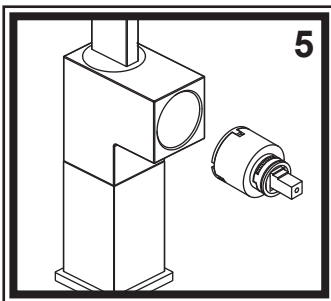
2 With your fingernail, pry out the black rubber insert covering the set screw on the bottom of the handle. Using the hex wrench (included), loosen the set screw inside the bottom of the handle (two or three revolutions should be enough to allow the handle to pull off the stem). It might help to rotate the handle to the back (hot) position, to give easier access to the plug and set screw. Slide the handle off the stem.



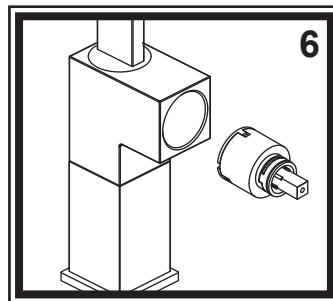
3 Unscrew the trim cap from the lock nut holding the cartridge in place. Be careful not to scratch the finish.



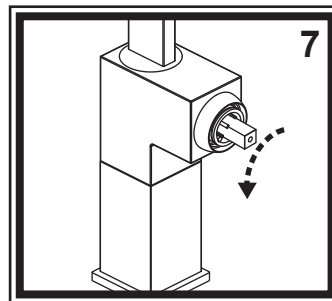
4 Using the adjustable wrench or pliers, unscrew the lock nut. Position the tool on the flat sections on opposite sides of the lock nut's outer threaded area. **DO NOT** position the tool on the threaded portion of the lock nut, as it may crush or damage the threads around the outside.



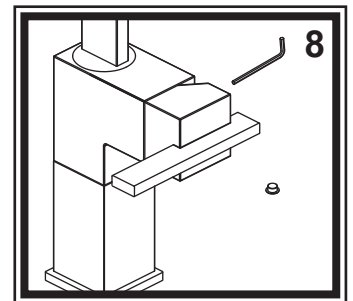
5 Pull the existing (tilt- on/off & rotate-hot/cold) cartridge out of the faucet.



6 Slide the new (rotate only) cartridge into the faucet's valve body. Note that there are two alignment pins molded into the bottom of the cartridge. Make sure these pins align properly and go into their receptacles in the valve body. Proper alignment will ensure the cartridge housing is installed at the correct rotation.



7 Replace the lock nut and trim cap following the reverse instructions from above. Be careful not to over-tighten the lock nut or trim cap when installing. **ROTATE THE CARTRIDGE STEM TO THE "OFF" POSITION.** Turn it counter-clock as far as it will go.



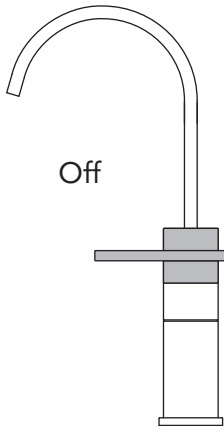
8 With the cartridge stem rotated into the "OFF" position, slide the handle onto the cartridge stem. The handle "blade" will be parallel to the counter top, pointing towards the front of the sink (see illustration). Using the hex wrench, tighten the set screw on the, now, back of the handle. Turn the water supply back on.

See Reverse Page

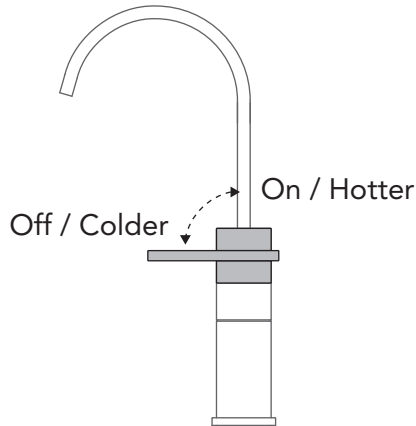
Your new cartridge will change the way the faucet handle functions.

With the new cartridge, the handle only rotates.

The further you rotate, the hotter the water gets (similar to most newer single handle showers).

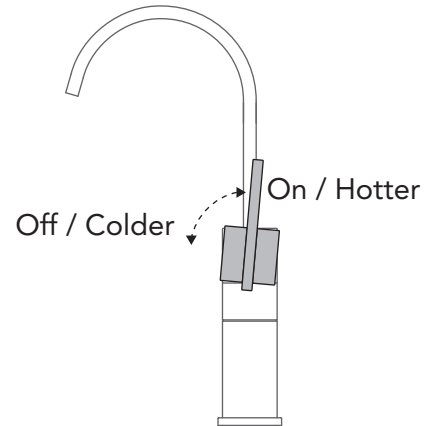


Off



Off / Colder

On / Hotter



Off / Colder

On / Hotter

Identifying the cartridges

NEW CARTRIDGE
Part# E-507858N



ROTATE ONLY

ORIGINAL CARTRIDGE
Part# E-507348N



TILT & ROTATE

PROPER FINISH CARE

Your new faucet or accessory is protected by a clear-coat. To clean it, you only need to wipe it with a damp, soft cloth. NEVER use any abrasive cleaners, steel wool, or chemicals (including alcohol or ammonia), as they will harm the finish and void your warranty. If the item will be installed in a salt-air environment (boat exterior), regular cleaning with gentle soap and carnauba wax will prolong the life of the finish.

Visit our web site at www.ambassadormarine.com

Ambassador Marine reserves the right to update specifications, change prices, or make substitutions without notice.

Parts

- 1) Sirius Handle Assembly
- 2) Rubber Insert (Black)
- 3) Set Screw
- 4) Trim Cap
- 5) Lock Nut
- 6) Ceramic Disc Cartridge (shown with original cartridge)
- 7) Valve Body
- 8) Faucet Assembly

