

---

---

# INSTRUCTION GUIDE

---

---

- Step-By-Step Illustrated Installation Instructions
  - Disk Cleaning Instructions
  - Proper Finish Care
  - Limited Warranty

👉 Read these instructions carefully before installing your new shower head 👉

---

---

**Ambassador**  
**FINE FAUCETS**

VISIT US  
[www.ambassador-amc.com](http://www.ambassador-amc.com)  
ON THE WEB



CALL FOR A  
FREE CATALOG  
FEATURING OUR  
COMPLETE LINE OF  
OVER 400 FAUCETS  
& ACCESSORIES

## MIRAGE SHOWER HEAD with Adjustable Shower Arm

For Model:  
☑ 317-1396

# BEFORE YOU BEGIN

Your new Ambassador shower head will give you years of trouble-free performance. Thank you for choosing our product for your home. Please read these instructions carefully before installing your new shower head.

Helpful items to install this shower head:

- adjustable wrench or pliers
- towel
- utility knife or scissors
- Phillips-head screwdriver

## IMPORTANT POINTS TO REMEMBER

- CAUTION: Connections and wing-nuts that are too tight will reduce the integrity of the system.
- Wrap all threaded connections with Teflon tape that is supplied with this shower head. Always wrap in a clockwise direction.

# INSTALLATION PROCEDURE

1



(1) Remove your existing shower head from your existing shower arm. Unscrew it by turning it counter-clockwise.

(2) Clean away any debris, plumber's putty or Teflon tape from the threads of your existing shower arm.

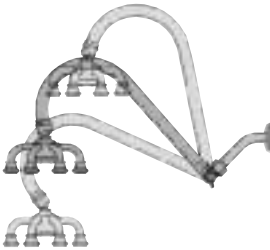
4



(3) Wrap the threads on your existing shower arm with Teflon tape (included).

(4) Attach new extension arm to your existing shower arm by turning the union nut fitting clockwise. Hold the new extension arm in the upright position while you rotate only the union nut. Attach new Mirage Shower Head to new extension arm. Tighten both securely to avoid leaks.

5



(5) Adjust the height and angle of your new extension arm as desired. Simply loosen the wing nut, adjust and retighten.

## WATER-SAVING RESTRICTOR

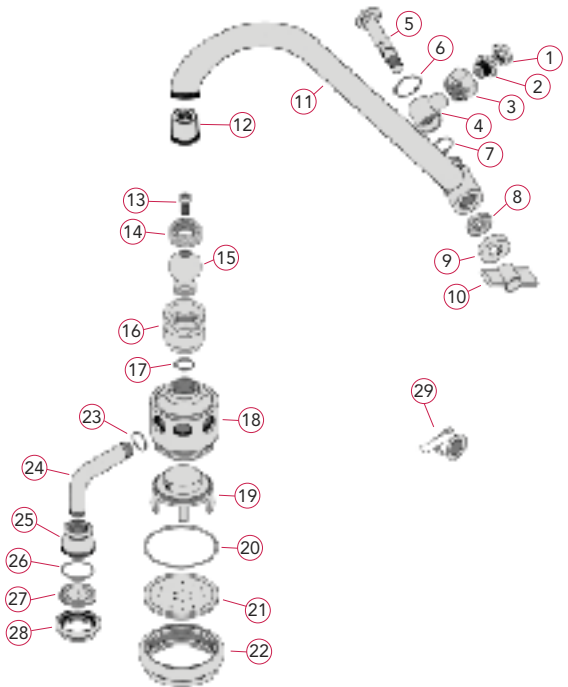
We have installed a water restrictor in this shower head. If your water flow or pressure seems weak (less than 2.5 gallons per minute at 80 psi) or the shower head does not perform to your satisfaction, YOU CAN EASILY REMOVE THE WATER RESTRICTOR. Simply remove your Mirage Shower Head from the extension arm. With a Phillips-head screwdriver, unscrew the restrictor screw in the ball joint, inside the shower head fitting.



# MAINTENANCE • CARE

## PART NUMBERS

1) Washer	06080
2) Coupler	07749
3) Union Nut	07751CP
4) Connector	07752CP
5) Bolt	12534CP
6) O-Ring	04891
7) O-Ring	00415
8) Washer	05822
9) Cover	04508CP
10) Wing Nut	02987YP
11) Curved Arm	02071CP
12) Insert	13668
13) Water Restrictor	07511
14) Gasket	05842
15) Ball Joint	07745CP
16) Fitting	07747CP
17) O-Ring	04884
18) Body	07615CP
19) Diverter	20922
20) O-Ring	07205
21) Center Disk	13669CP
22) Center Collar	04537YP
23) O-Ring	07258
24) Arm	02072CP
25) Bonnet	07746CP
26) O-Ring	00410
27) Disk	13670CP
28) Collar	13671YP
29) Teflon Tape	20301



## CLOGGED DISKS / MINERAL BUILD-UP

After time, mineral deposits may build up on the disks, these will clean off easily. It is usually not necessary to open your shower head. Cleaning from the outside is advised. A mild soap and water solution should be sufficient, however, a stronger vinegar and water solution or gentle cleaning product (such as "Lime-Away" or "Soft-Scrub") may also be used. In serious cases, soak the entire shower head in the vinegar solution overnight. In severe cases, it may be necessary to open the shower head and clean the disks from the inside. Unscrew the collar and remove the disk. Using a pin or a small needle, poke through each hole to break away the minerals. **NOTE:** Always unplug disks from the inside to avoid finish damage. Replace the disk taking care to properly align the o-ring with the edge of the disk. Do not over tighten collar.

## PROPER FINISH CARE

Your new Mirage Shower Head is protected by a clear-coat. To clean the surface, you only need to wipe it with a damp, soft cloth. NEVER use any abrasive cleaners, steel wool or chemicals, as they will harm the finish and void your warranty. For additional cleaning help, call our Customer Service Center at 1-800-270-4262.

# LIFETIME FINISH / 1 YEAR PARTS LIMITED WARRANTY

The manufacturer warrants this product to the original purchaser to be free from defects in material or workmanship for a period of one year from the date of purchase found on the retail sales receipt, a copy of which is required for any warranty claims. The warranty on the finish of this product is for the life of the shower head. However, the manufacturer will not be responsible for mineral build-up due to hard water (please see, "Clogged Disks / Mineral Build-Up" above). Do not attempt to clean your shower head with any kind of chemical or abrasive cleaner. Any abrasive will mar the finish and void this warranty (please see, "Proper Finish Care" above).

IF YOU NEED MORE INFORMATION CONCERNING PARTS OR SERVICE  
DO NOT CONTACT YOUR RETAILER, PLEASE CONTACT:

**CUSTOMER SERVICE CENTER**  
**1-800-270-4262**

Please be advised that this warranty does not cover labor, or other costs of installation, removal, repair, freight to or from the manufacturer, or reinstallation of any parts or surfaces. Further, this warranty is void when a defect or failure results from misuse, neglect, accident, improper installation, or modification of the product, or as a result of work performed by other than the manufacturer.

This warranty is in lieu of all other expressed warranties. The sole and exclusive remedy against the maker hereunder shall be for repair or replacement of the parts, exclusively at the option of the manufacturer. Further, the manufacturer cannot issue refunds for products not purchased directly from the manufacturer. In no event will the maker or its agents be liable for incidental or consequential damages arising out of the purchase or use of this product.

If your state does not allow the exclusion or limitation of incidental or consequential damages the above limitations may not apply to you. This warranty gives you certain legal rights which may vary from State to State.

# Ambassador

FINE FAUCETS

*... beautiful products built to last.*

If You Have Any Problems,  
DO NOT CONTACT YOUR RETAILER  
FOR SERVICE OR PARTS.

Call Our Customer Service Center.

For Questions, Service,  
Or Replacement Parts Call:

1-800-270-4AMC

9:00 AM - 5:00 PM Pacific Time

Monday - Friday



CALL FOR A  
FREE CATALOG  
FEATURING OUR  
COMPLETE LINE OF  
OVER 400 FAUCETS  
& ACCESSORIES



Associated Marketing Concepts  
Customer Service Warehouse  
21624 Marilla Street  
Chatsworth, CA 91311-4123  
[www.ambassador-amc.com](http://www.ambassador-amc.com)