

# INSTRUCTION GUIDE

- Step-By-Step Illustrated Installation Instructions
  - Jet Cleaning Instructions
  - Proper Finish Care
  - Limited Warranty

☞ Read these instructions carefully before installing your new shower system ☞

**Ambassador®**  
**FINE FAUCETS**



CALL FOR A  
FREE CATALOG  
FEATURING OUR  
COMPLETE LINE OF  
OVER 450 FAUCETS  
& ACCESSORIES

## *Dual Head* **Shower System**

For Model:  
☑ 317-8749

## BEFORE YOU BEGIN

Your new Ambassador shower system will give you years of trouble-free performance. Thank you for choosing our product for your home. Please read these instructions carefully before installing your new shower system.

Helpful items to install this shower head:

- pencil
- safety goggles
- powered drill
- bubble level
- hammer
- towel
- adjustable wrench or pliers
- utility knife or scissors
- Phillips-head screwdriver

### IMPORTANT POINTS TO REMEMBER

- CAUTION: Connections that are too tight will reduce the integrity of the system.
- Wrap all threaded connections with Teflon tape that is supplied with this shower head. Always wrap in a clockwise direction.

## INSTALLATION PROCEDURE

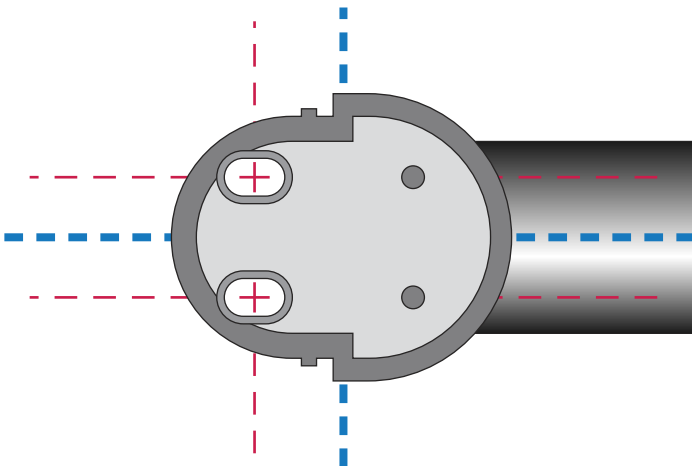
(1) Determine the best position for your new slide bar, making sure it does not interfere with your shower handle(s) or existing shower arm.



(2) Using the attached template, level and mark the hole positions for drilling.



Remember the old saying, "Level twice, drill once!"



## INSTALLATION PROCEDURE

(3) Using the included drill bit, carefully drill the four (4) holes.

**Important Note:** The included masonry drill bit is intended for most shower surfaces. Including tile, marble, granite and other stones.

(4) Insert the plastic wall anchors into the four (4) holes. You may need to lightly tap them into position with a hammer.

(5) Remove the covers from the posts (see step 7 photo). Position the top post over the anchors. Slide the notched metal bracket over the internal center support of the post, making sure the holes in the bracket align in front of the holes inside the plastic post.

(6) Secure post with screws provided.



# Caution: This is not

# Use this template to help position

## INSTALLATION PROCEDURE

(7) Slide the cover back onto the post, it should "click" into place.

Hold the bar into top post, making sure the notch in the post aligns with the groove in the bar.

Repeat step 5 - 7 for bottom post.

(8) Attach diverter control valve to existing shower arm. Make sure the threads are clean and apply white Teflon tape.

If you intend to use the stationary shower head in a separate shower, skip this step!

(9) Attach stainless steel hose with swivel nut to the bottom threaded connector on the diverter control valve. Make sure the threads are clean and apply white Teflon tape.

If you are using the stationary shower head in a separate shower, attach the stainless steel hose with swivel nut directly to your existing shower arm.

(10) Attach stationary shower head to the front threaded connector on the diverter control valve. Make sure the threads are clean and apply white Teflon tape.

If you are installing this stationary shower head in a separate shower, attach head directly to your existing shower arm.



# t a safety grab bar

# tion the holes before you drill!

# INSTALLATION PROCEDURE

(11) Attach soap dish to slide bar. Hold dish at a 45° angle and pivot into position using moderate pressure.



(12) Adjust the position of the hand-held massage support bracket as desired. Rotate knob 1/4 turn to release and lock.



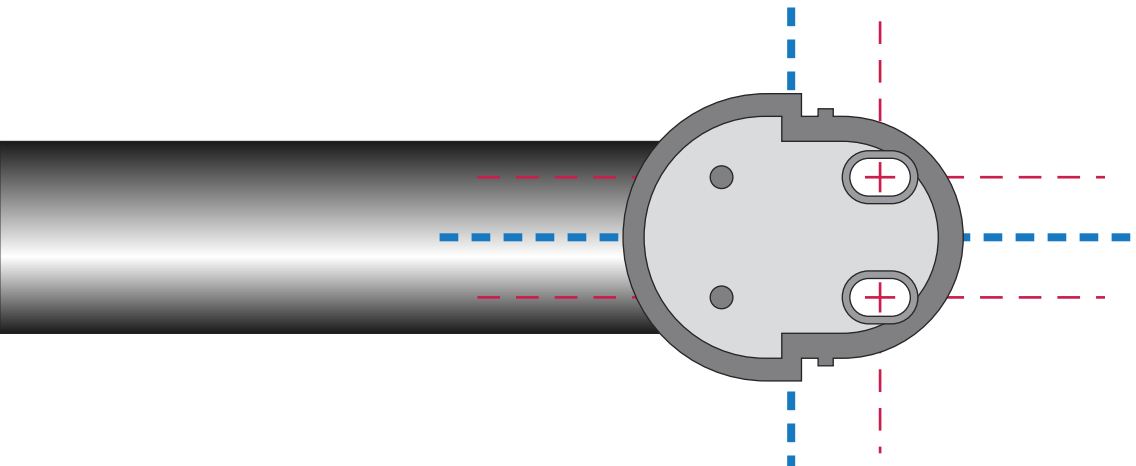
(13) Attach stainless steel hose to the plastic threaded connector on the hand-held massage.



(14) Place hand-held massage into support bracket.



Congratulations! You have turned your shower into a 5-Star European hotel spa...



# MAINTENANCE • CARE

## PART NUMBERS

### Slide Bar

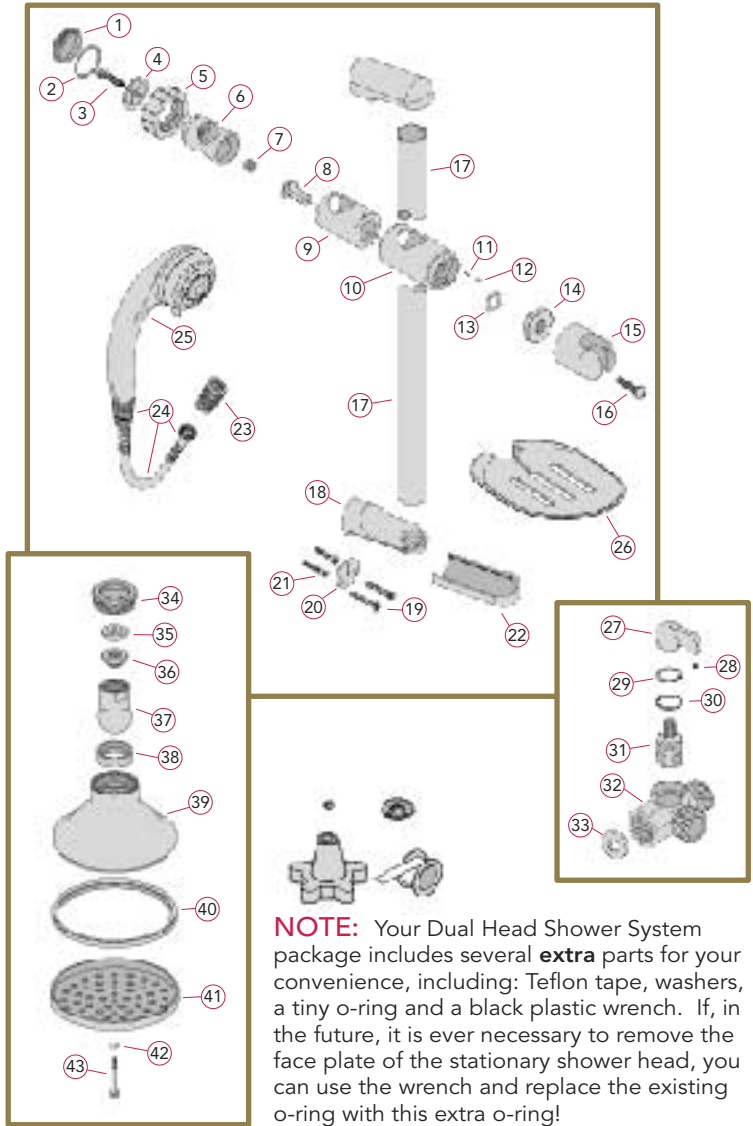
1) Cap	028085CP
2) O-Ring	063008
3) Screw	075095
4) Disk	112331
5) Knob	069097YP
6) Sleeve	062010
7) Friction Pad	068115
8) Adapter	077109CP
9) Housing	032035
10) Body	112282CP
11) Spring	005024
12) Pin	003006
13) O-Ring	063040
14) Coupler	112041
15) Holder	112281CP
16) Screw	008083CP
17) Bar	025016CP
18) Post	034036CP
19) Wall Screws	075094
20) Bracket	112329
21) Wall Anchors	291001
22) Cover	045032CP
23) Swivel Nut	112165CP
24) Stainless Steel Hose	134036
25) Hand-Held Massage	537245CG
26) Soap Dish	265011CP

### Diverter Control

27) Handle	079006CP
28) Set Screw	075119
29) Clip	045043
30) O-Ring	072095
31) Cartridge	024087CP
32) Body	131008CP
33) Washer	058062

### Stationary Shower Head

34) Collar	054024CP
35) Flow Restrictor	113011
36) Washer / Screen	022028
37) Fitting / Ball Joint	077108CP
38) Packing	058001
39) Housing	055040CP
40) Gasket	058037
41) Face Plate	112134CY
42) O-Ring	004058
43) Face Screw	053030YP



If you choose to use the stationary shower head in a different shower, you may remove your existing standard shower arm and upgrade to our flush-mount 90° Hose Connector. Call Customer Service at 800-270-4262 or order on-line at [www.ambassador-amc.com](http://www.ambassador-amc.com)





# MAINTENANCE • CARE

## DISCOLORED OR CLOGGED JETS

**HAND-HELD MESSAGE:** After time, mineral deposits may build up on the silicone rubber jets, these will clean off easily. Simply rub the jet with your fingers! If the jet continues to have an improper flow after rubbing, use a straightened paper clip or pin to open the clogged jet.



**STATIONARY SHOWER HEAD:** After time, green or white mineral deposits may build up on the metal jets. Build-up is NOT a discoloration of the metal. It is a mineral build-up and chemical reaction to the metal jets that will clean off easily. It is usually not necessary to open your shower head. Cleaning from the outside is advised.

A mild soap and water solution should be sufficient, however, a stronger vinegar and water solution (approx. 50/50) or gentle cleaning product (such as "Lime-Away" or "Soft-Scrub") may also be used. In serious cases, soak the entire face plate in the vinegar solution overnight.

In severe cases, it may be necessary to open the shower head and clean the jets from the inside. Remove the face plate with the plastic wrench (included). Unscrew only the center nut of your shower head. Using a wire brush or a small piece of wire, poke through each jet to break away the minerals. NOTE: Always unclog jets from the inside to avoid finish damage. Replace face plate taking care to properly align the large black gasket with the edge of the housing and o-ring with the front of the face plate. Do not over tighten center nut.

## WATER-SAVING FLOW RESTRICTOR

Federal law requires we install a water-saving flow restrictor (2.5 gallons per minute at 85 psi maximum) in your shower heads. If your water flow is below 2.5 GPM or does not perform to your satisfaction, you can easily remove the restrictors.

**HAND-HELD MESSAGE:** Unscrew your hand-held massage from the stainless steel hose. Located in the plastic threaded connector of the hand-held massage is a black rubber plug with small holes. Simply pull the plug out of the connector and discard.

**STATIONARY SHOWER HEAD:** Remove your stationary shower head from the diverter control valve (or standard shower arm). With a Phillips-head screwdriver, simply unscrew the small white disk in the shower head fitting. Discard flow restrictor disk.

## DIVERTER CONTROL VALVE

Due to Federal regulations, a small amount of water will continue to flow through the diverter control valve, to the unselected setting, while the shower is in use.

## PROPER FINISH CARE

Your new Dual Head Shower System is protected by a clear-coat. To clean the surface, you only need to wipe it with a damp, soft cloth. NEVER use any abrasive cleaners, steel wool or chemicals, as they will harm the finish and void your warranty. For additional cleaning help, call our Customer Service Center at 1-800-270-4262.

# 1 YEAR LIMITED WARRANTY

The manufacturer warrants this product to the original purchaser to be free from defects in material or workmanship for a period of one year from the date of purchase found on the retail sales receipt, a copy of which is required for any warranty claims. The warranty on the finish of this product is also for one year from the date of purchase. However, the manufacturer will not be responsible for mineral build-up, within that year, due to hard water (please see, "Discolored or Clogged Jets" above). Do not attempt to clean your shower system with any kind of chemical or abrasive cleaner. Any abrasive will mar the finish and void this warranty (please see, "Proper Finish Care" above).

IF YOU NEED MORE INFORMATION CONCERNING PARTS OR SERVICE  
DO NOT CONTACT YOUR RETAILER, PLEASE CONTACT:

**CUSTOMER SERVICE CENTER**  
**1-800-270-4262**

Please be advised that this warranty does not cover labor, or other costs of installation, removal, repair, freight to or from the manufacturer, or reinstallation of any parts or surfaces. Further, this warranty is void when a defect or failure results from misuse, neglect, accident, improper installation, or modification of the product, or as a result of work performed by other than the manufacturer.

This warranty is in lieu of all other expressed warranties. The sole and exclusive remedy against the maker hereunder shall be for repair or replacement of the parts, exclusively at the option of the manufacturer. Further, the manufacturer cannot issue refunds for products not purchased directly from the manufacturer. In no event will the maker or its agents be liable for incidental or consequential damages arising out of the purchase or use of this product.

If your state does not allow the exclusion or limitation of incidental or consequential damages the above limitations may not apply to you. This warranty gives you certain legal rights which may vary from State to State.

**Ambassador**  
FINE FAUCETS

*... beautiful products built to last.*

If You Have Any Problems,  
DO NOT CONTACT YOUR RETAILER  
FOR SERVICE OR PARTS.

Call Our Customer Service Center.

For Questions, Service,  
Or Replacement Parts Call:

1-800-270-4AMC

9:00 AM - 5:00 PM Pacific Time

Monday - Friday



CALL FOR A  
FREE CATALOG  
FEATURING OUR  
COMPLETE LINE OF  
OVER 450 FAUCETS  
& ACCESSORIES



Associated Marketing Concepts  
Customer Service Warehouse  
21624 Marilla Street  
Chatsworth, CA 91311-4123  
[www.ambassador-amc.com](http://www.ambassador-amc.com)