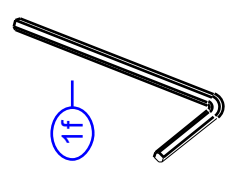
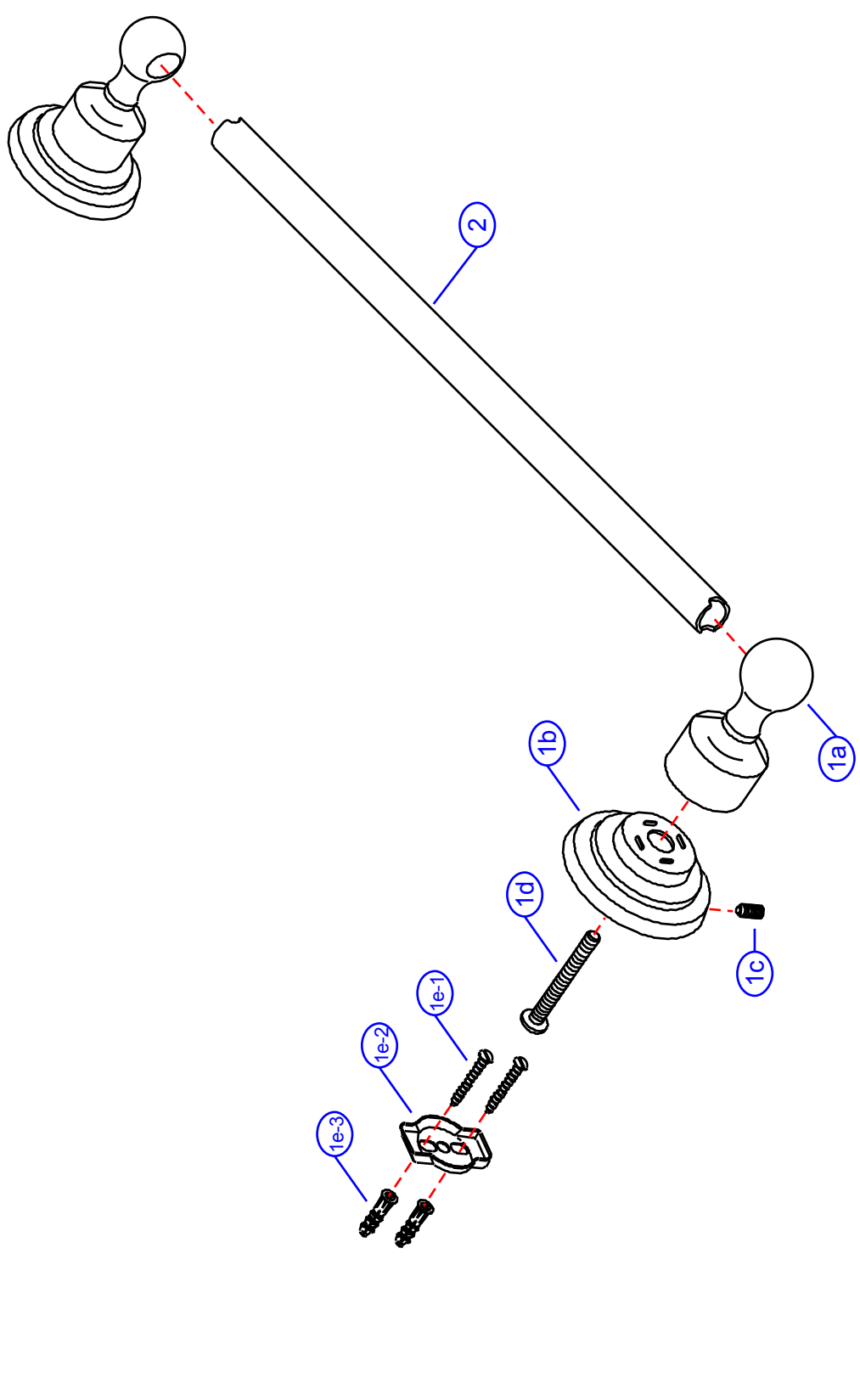


32-V

by Associated Marketing Concepts
 21624 Marilla Street, Chatsworth, CA 91311-4123
 (800) 270-4262 | (818) 678-1651 | FAX (818) 678-1655
 www.ambassador-amc.com

By	SS	Main Finish	Satin	Model #	32-V
Modified/Approved	3-3-04	Accent Finish	Chrome	Series	Bar-Lever
Fulfillment	A663455SC+A25011CP	Valve	NA	Type	18" Towel Bar



32-V



Bar-Lever 18" Towel Bar- SC

#	Description	Quantity	Part #	Finish
1	Towel Bar Post Set (Assembled)	1	EA-663455SC	Satin/Chrome
1a	Post Head	2	E-240042ST*	Satin
1b	Base	2	E-241041CP*	Chrome
1c	Set Screw	2	E-075039	Metal
1d	Post Screw	2	E-065024ZN*	Metal
1e	Mounting Hardware	2	EA-290013	Metal /Plastic
1e-1	Mounting Screws	4	E-053022ZN*	Metal
1e-2	Wall Plate	2	E-293003ZN*	Metal
1e-3	Mollies	4	E-291001*	Plastic
1f	Allen Key	1	E-031000	Metal
2	18" Towel Bar	1	E-250111CP	Chrome

* Grayed parts are not available individually. "Assembled" item required.

by Associated Marketing Concepts
21624 Marilla Street, Chatsworth, CA 91311-4123
(800) 270-4262 * (818) 678-1651 * FAX (818) 678-1655
www.ambassador-amc.com