

REV. CHANGE

A	Ambassador Branded
B	Refreshed

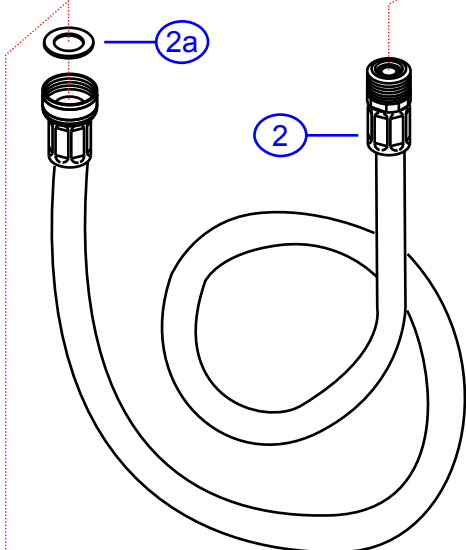
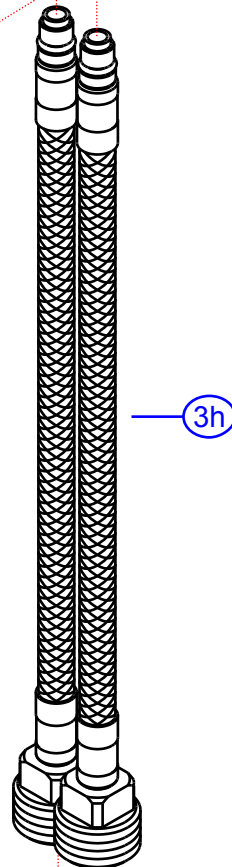
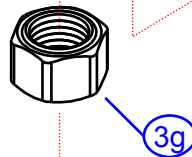
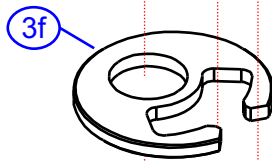
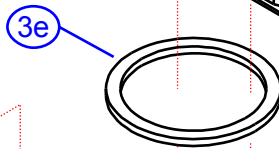
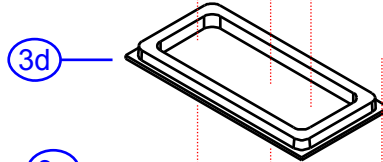
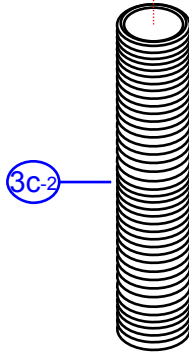
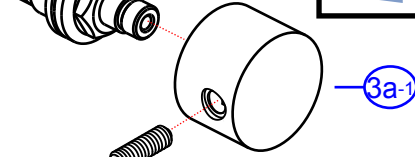
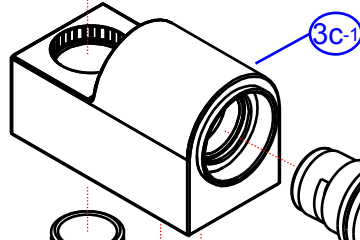
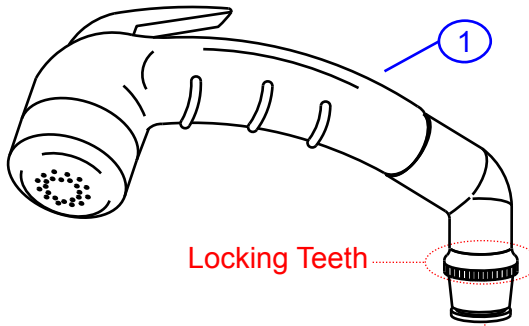
134-1720-xx

www.ambassadormarine.com
800.270.4262

© Ambassador Marine, Inc.

Ambassador
MARINE

Rev #	B	Package Style	OEM	Model #	134-1720-xx
ERP #			N/A	Series	Aidack
Drawn By	SS	Approved/Modified	07/09/2021	Type	Pull-Out Deck Tap (Cold Only)



NOT DRAWN TO SCALE

134-1720-xx

Aidack
Pull-Out Deck Tap (Cold Only)
Rev. B



(800) 270-4262
www.ambassadormarine.com

#	Description	Qty	Part #	Finish Code Suffix (i.e. EA-123456CP)				Material
				CA	CK	CP	CW	
1	Small Sprayer (with locking teeth) Assembly see "Individual Sprayer" for complete sprayer breakdown	1	138-0005-__	AW	KP	CP	WH	-
1a	Washer	1	L-SH1023					NBR
2	6' Rubber Hose Assembly	1	130-0017-__	WH	KP	KP	WH	-
2a	Washer	1	L-024132					NBR
3	Aidack- Pull-Out Deck Tap Body Assembly	1	LA-JS1A0624	CP	CP	CP	CP	-
3a	Aidack- Handle Assembly	1	LA-038659	CP	CP	CP	CP	-
3a-1	Aidack- Handle Canopy	1	L-038614*	CP	CP	CP	CP	ZnA14
3a-2	Set Screw	1	L-020423					SUS304
3a-3	Aidack- Handle Tip	1	L-034131	CP	CP	CP	CP	ZnA14
3b	Ceramic Disk Cartridge	1	L-531093C					-
3c	Body Assembly	1	LA-103330	CP	CP	CP	CP	-
3c-1	Body	1	L-107138N*	CP	CP	CP	CP	HBi60
3c-2	Mounting Shaft	1	L-071106	CP	CP	CP	CP	HPb59
3d	Gasket	1	L-024479					NBR
3e	Washer	1	L-024456					NBR
3f	Horseshoe Washer (Metal)	1	L-024478					HPb59
3g	Mounting Nut	1	L-058676					HPb59
3h	Connector Hose (Gray)	1	L-300232N					-
	Connector Hose (Blue)	1	L-300232NC					-

* - Part is not available individually. "Assembled" item is required.

All sub-components included within assembly (i.e. "1" includes "1a", "1b", "1c", etc.)

Revised: 7/10/2021