

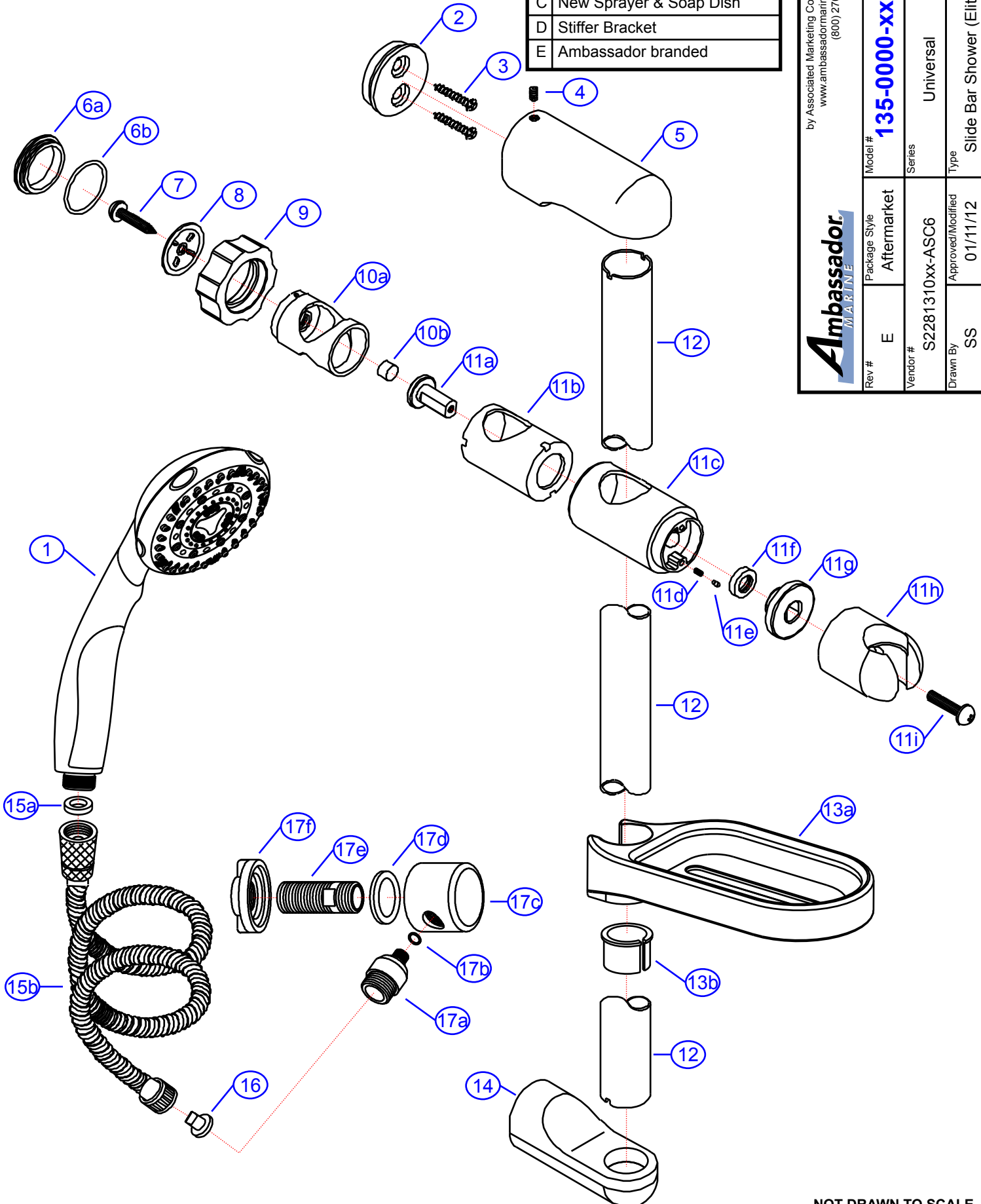
135-0000-xx

by Associated Marketing Concepts
www.ambassadormarine.com
(800) 270-4262

Ambassador
MARINE

Rev #	E	Package Style	Aftermarket	Model #	135-0000-xx
Vendor #	S2281310xx-ASC6	Series	Universal		
Drawn By	SS	Approved/Modified	01/11/12	Type	Slide Bar Shower (Elite)

Rev.	Change
A	SHURflo branded
B	Add Pipe Nipple & Lock Nut
C	New Sprayer & Soap Dish
D	Stiffer Bracket
E	Ambassador branded



NOT DRAWN TO SCALE

135-0000-xx

Universal
Slide Bar Shower (Elite)
Rev. E



#	Description	Part #	Finish Code Suffix (i.e. EA-123456CP)						Qty
			CP						
1	8-Function Sprayer	EA-S2284401	CP						1
2	Bracket	E-112319							2
3	Mounting Screw	E-075022							4
4	Set Screw	E-008003							2
5	Post (Top)	E-112046	CP						1
6	Cap Assembly	G-A90722	CP						1
6a	Cap	E-028085*	CP						1
6b	O-Ring	E-063008							1
7	Screw	E-075095							1
8	Disk	E-112331							1
9	Universal Slide Bar Knob	E-069097	CP						1
10	Slide Bar Sleeve Assembly	EA-663751							1
10a	Sleeve	E-052010*							1
10b	Friction Pad	E-068115*							1
11	Slide Bar Bracket Assembly	EA-112202	CP						1
11a	Adapter	E-077109*	CP						1
11b	Housing	E-032035*							1
11c	Body	E-112282*	CP						1
11d	Spring	E-005024*							2
11e	Pin	E-003006*							2
11f	Washer	E-060080							1
11g	Coupler	E-112041							1
11h	Holder	E-112281*	CP						1
11i	Screw	E-008083*							1
12	Bar	E-112660	CP						1
13	Soap Dish Assembly	EA-255149	CP						1
13a	Soap Dish	E-255148*	CP						1
13b	Locking Ring	E-126227*							1
14	Post (Bottom)	E-112047	CP						1
15	6' Stainless Steel Hose Assembly	130-0033-__	SS						1
15a	Washer	E-058007							1
15b	6' Stainless Steel Hose	E-xxxx*							1
16	Anti-Siphon Device	E-112313							1
17	90 Degree Elbow Assembly	130-0015-__	CP						1
17a	Hose Connector	E-039197*	CP						1
17b	O-Ring	E-004004							1
17c	Connector Body	E-039198*	CP						1
17d	Gasket	E-010097							1
17e	Pipe Nipple	E-017247							1
17f	Lock Nut	E-009007							1

* - Part is not available individually. "Assembled" item is required.