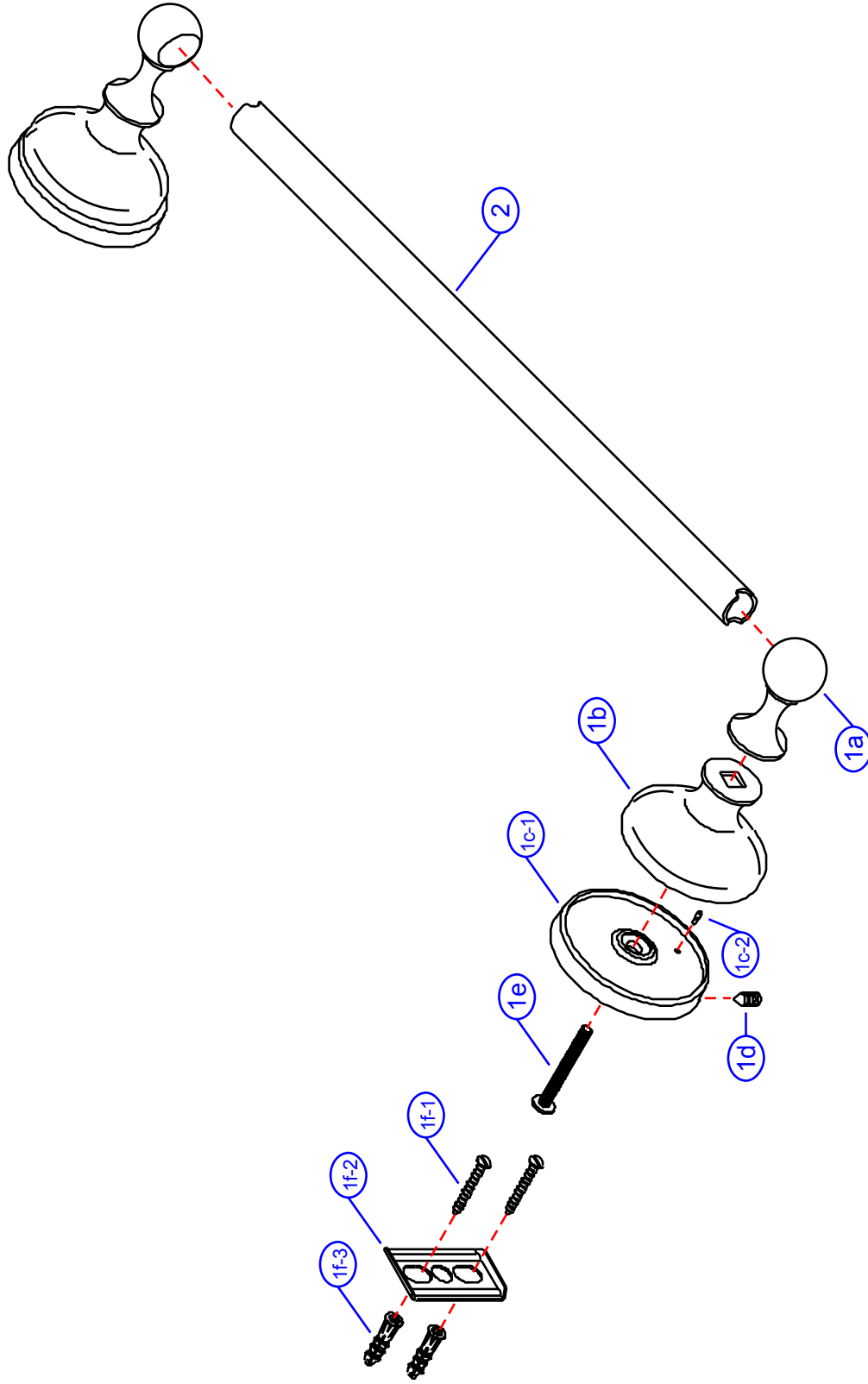
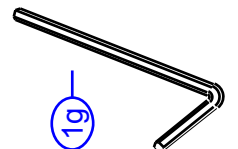


# 22-J



by Associated Marketing Concepts  
 21624 Marilla Street, Chatsworth, CA 91311-4123  
 (800) 270-4262 | (818) 678-1651 | FAX (818) 678-1655  
 www.ambassador-amc.com

By	SS	Main Finish	Chrome	Model #	22-J
Modified/Approved	2-9-04	Accent Finish	None	Series	Universal
Fulfillment	A663096CP+A250111CP	Valve	NA	Type	18" Towel Bar



# 22-J



## Universal 18" Towel Bar- CP

#	Description	Quantity	Part #	Finish
1	Towel Bar Post Set (Assembled)	1	EA-663096CP	Chrome
1a	Post Head	2	E-240003CP*	Chrome
1b	Body	2	E-240001CP*	Chrome
1c	Base (Assembled)	2	EA-241311CP*	Chrome
1c-1	Base	2	E-241011CP*	Chrome
1c-2	Pin	2	E-255115*	Metal
1d	Set Screw	2	E-075039	Metal
1e	Post Screw	2	E-075088ZN*	Metal
1f	Mounting Hardware	2	EA-290131	Metal/Plastic
1f-1	Mounting Screws	4	E-053022ZN*	Metal
1f-2	Wall Plate	2	E-293000ZN*	Metal
1f-3	Screw Mollies	4	E-291001*	Plastic
1g	Allen Key	1	E-031000	Metal
2	18" Towel Bar	1	E-250111CP	Chrome

\* Grayed parts are not available individually. "Assembled" item required.

by Associated Marketing Concepts  
21624 Marilla Street, Chatsworth, CA 91311-4123  
(800) 270-4262 \* (818) 678-1651 \* FAX (818) 678-1655  
www.ambassador-amc.com