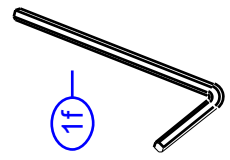
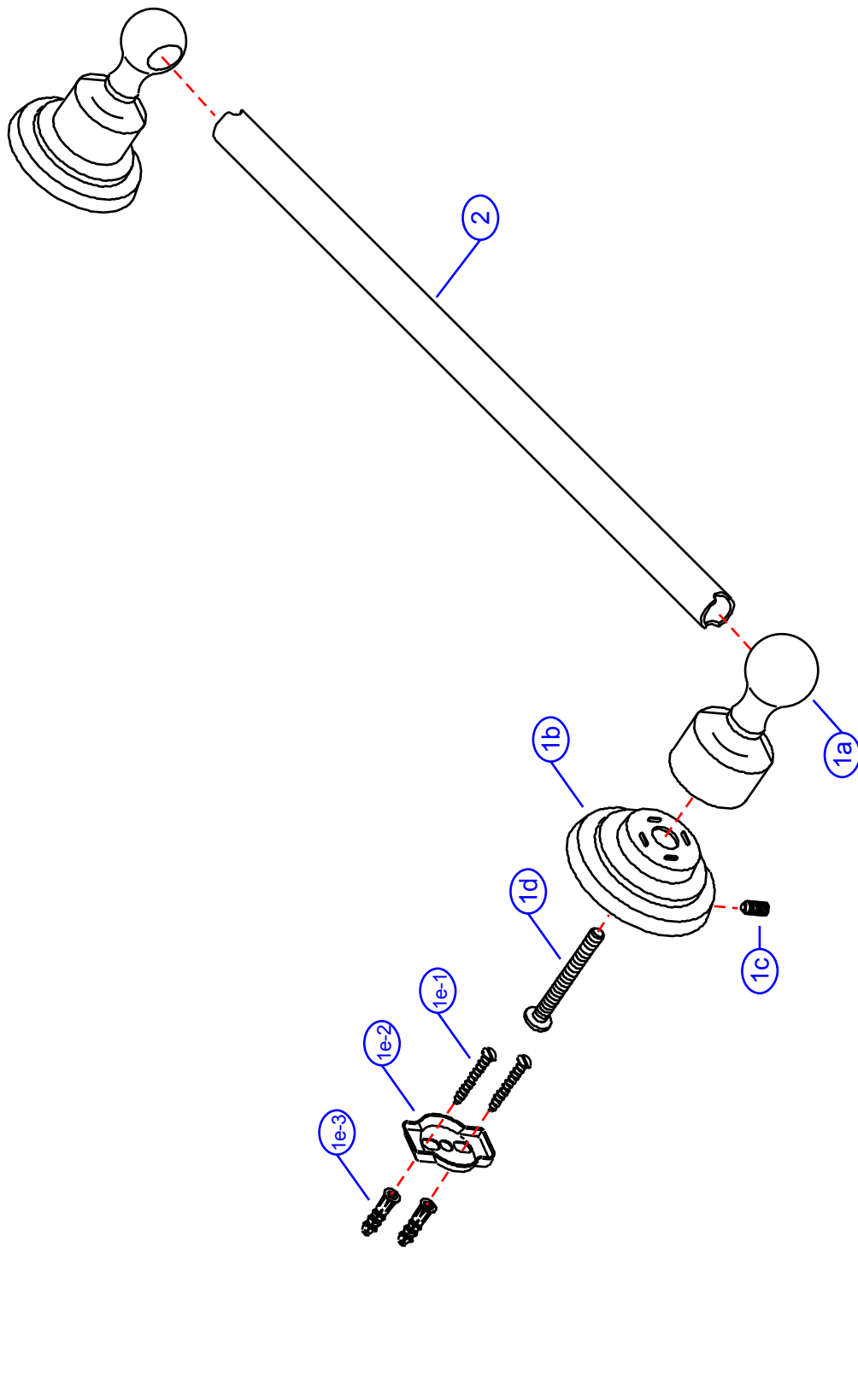


# 31-E

by Associated Marketing Concepts  
 21624 Marilla Street, Chatsworth, CA 91311-4123  
 (800) 270-4262 | (818) 678-1651 | FAX (818) 678-1655  
 www.ambassador-amc.com



By	SS	Main Finish	Brushed Nickel	Model #	31-E
Modified/Approved	3-3-04	Accent Finish	Dura-Life Finish	Series	Bar-Lever
Fulfillment	A663455NY+A250001NP	Valve	NA	Type	24" Towel Bar



# 31-E



## Bar-Lever 24" Towel Bar- NY

#	Description	Quantity	Part #	Finish
1	Towel Bar Post Set (Assembled)	1	EA-663455NY	Brushed Nickel/Dura-Life Finish
1a	Post Head	2	E-240042NP*	Brushed Nickel
1b	Base	2	E-241041YP*	Dura-Life Finish
1c	Set Screw	2	E-075039	Metal
1d	Post Screw	2	E-065024ZN*	Metal
1e	Mounting Hardware	2	EA-290013	Metal /Plastic
1e-1	Mounting Screws	4	E-053022ZN*	Metal
1e-2	Wall Plate	2	E-293003ZN*	Metal
1e-3	Mollies	4	E-291001*	Plastic
1f	Allen Key	1	E-031000	Metal
2	24" Towel Bar	1	E-250001NP	Brushed Nickel

\* Grayed parts are not available individually. "Assembled" item required.

by Associated Marketing Concepts  
21624 Marilla Street, Chatsworth, CA 91311-4123  
(800) 270-4262 \* (818) 678-1651 \* FAX (818) 678-1655  
www.ambassador-amc.com