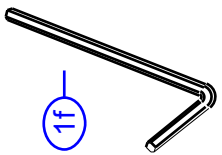
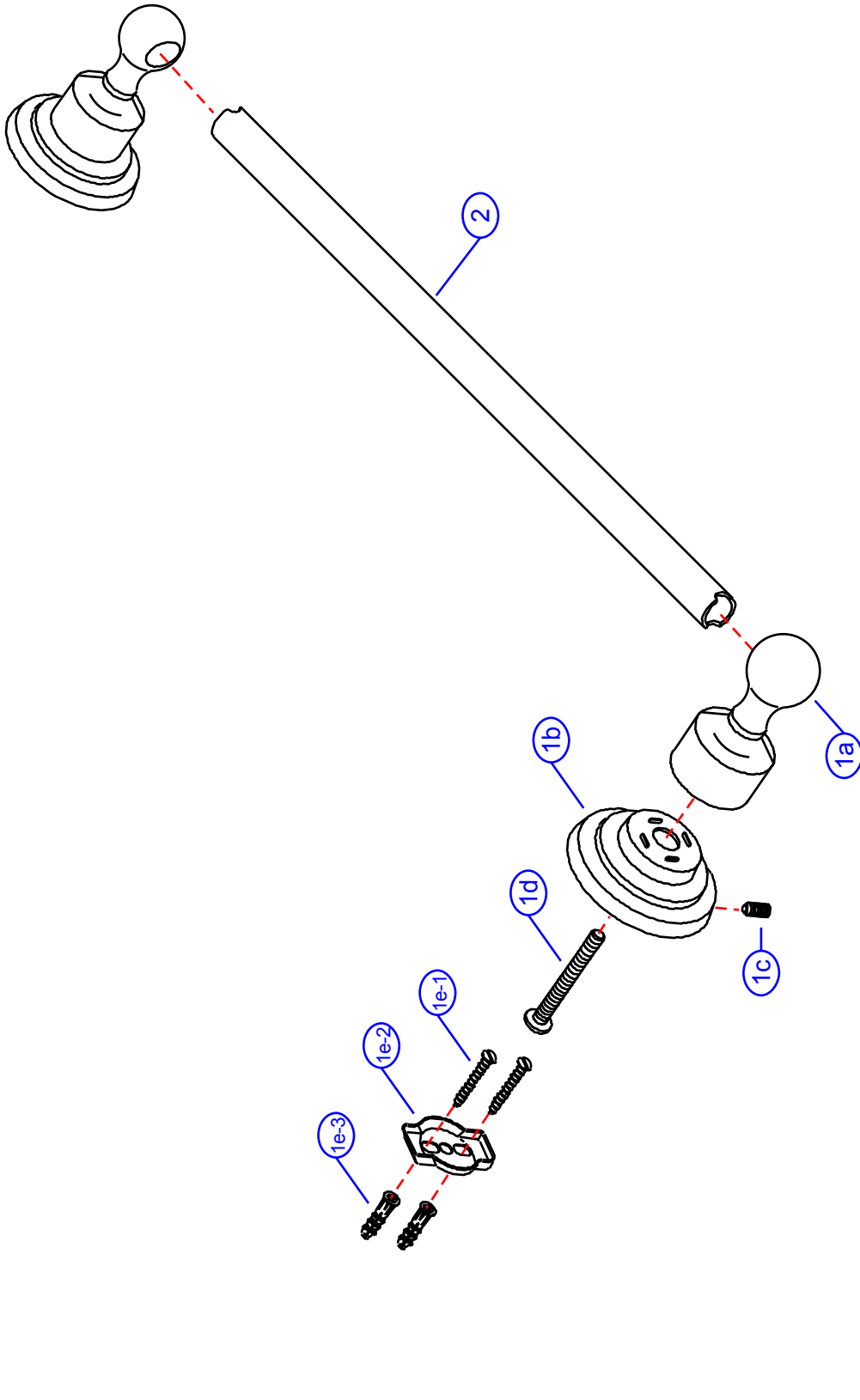


31-F

by Associated Marketing Concepts
 21624 Marilla Street, Chatsworth, CA 91311-4123
 (800) 270-4262 | (818) 678-1651 | FAX (818) 678-1655
 www.ambassador-amc.com

By	SS	Main Finish	Brushed Nickel	Model #	31-F
Modified/Approved	3-3-04	Accent Finish	Chrome	Series	Bar-Lever
Fulfillment	A663455NC+A250001NP	Valve	NA	Type	24" Towel Bar



31-F



Bar-Lever 24" Towel Bar- NC

#	Description	Quantity	Part #	Finish
1	Towel Bar Post Set (Assembled)	1	EA-663455NC	Brushed Nickel/Chrome
1a	Post Head	2	E-240042NP*	Brushed Nickel
1b	Base	2	E-241041CP*	Chrome
1c	Set Screw	2	E-075039	Metal
1d	Post Screw	2	E-065024ZN*	Metal
1e	Mounting Hardware	2	EA-290013	Metal /Plastic
1e-1	Mounting Screws	4	E-053022ZN*	Metal
1e-2	Wall Plate	2	E-293003ZN*	Metal
1e-3	Mollies	4	E-291001*	Plastic
1f	Allen Key	1	E-031000	Metal
2	24" Towel Bar	1	E-250001NP	Brushed Nickel

* Grayed parts are not available individually. "Assembled" item required.

by Associated Marketing Concepts
21624 Marilla Street, Chatsworth, CA 91311-4123
(800) 270-4262 * (818) 678-1651 * FAX (818) 678-1655
www.ambassador-amc.com