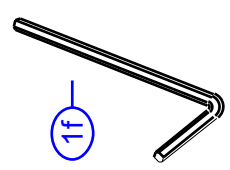
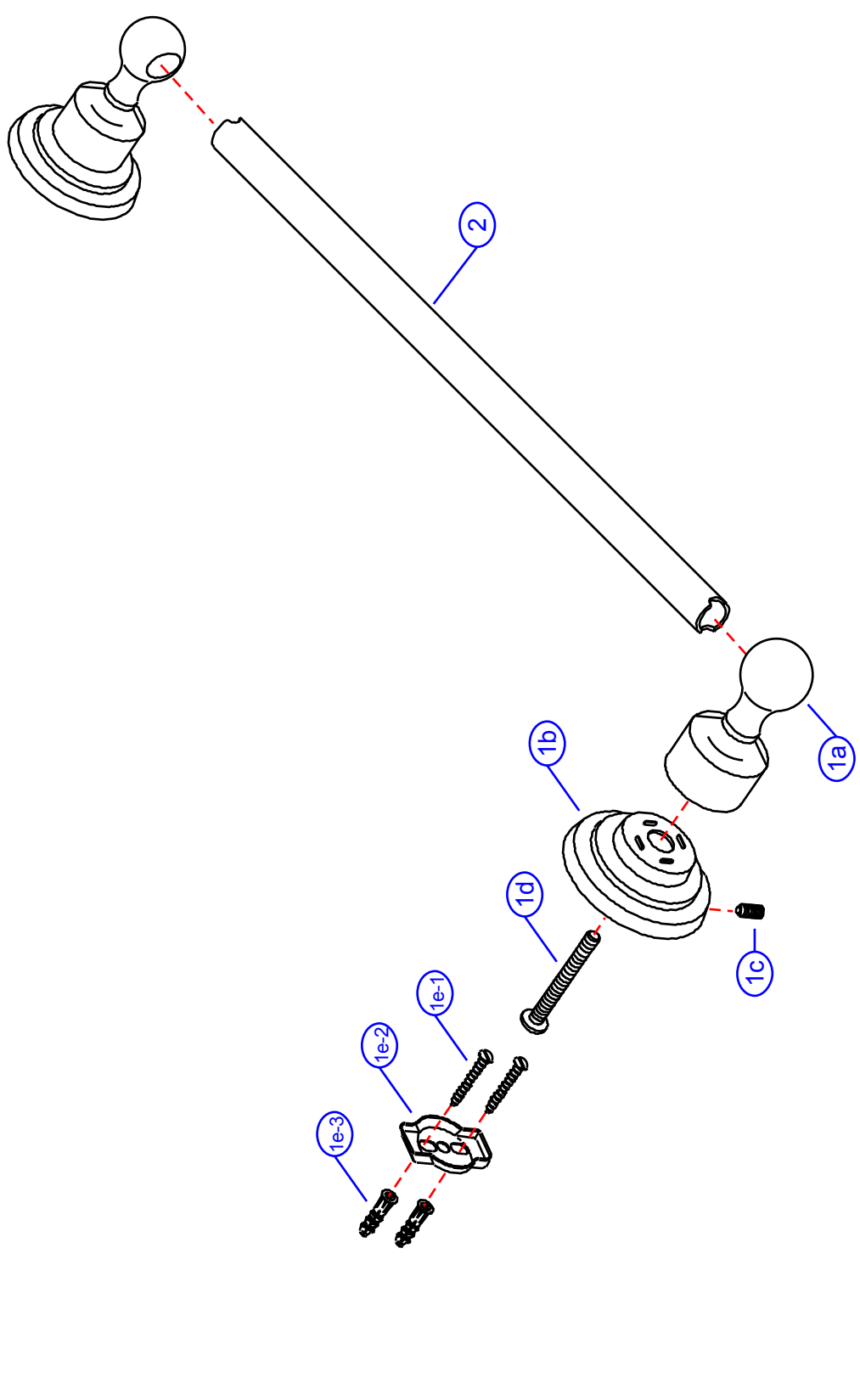


# 31-W

by Associated Marketing Concepts  
21624 Marilla Street, Chatsworth, CA 91311-4123  
(800) 270-4262 | (818) 678-1651 | FAX (818) 678-1655  
www.ambassador-amc.com

By	SS	Main Finish	Satin	Model #	<b>31-W</b>
Modified/Approved	3-3-04	Accent Finish	None	Series	Bar-Lever
Fulfillment	A663455ST+A250001ST	Valve	NA	Type	24" Towel Bar



# 31-W



## Bar-Lever 24" Towel Bar- ST

#	Description	Quantity	Part #	Finish
1	Towel Bar Post Set (Assembled)	1	EA-663455ST	Satin
1a	Post Head	2	E-240042ST*	Satin
1b	Base	2	E-241041ST*	Satin
1c	Set Screw	2	E-075039	Metal
1d	Post Screw	2	E-065024ZN*	Metal
1e	Mounting Hardware	2	EA-290013	Metal /Plastic
1e-1	Mounting Screws	4	E-053022ZN*	Metal
1e-2	Wall Plate	2	E-293003ZN*	Metal
1e-3	Mollies	4	E-291001*	Plastic
1f	Allen Key	1	E-031000	Metal
2	24" Towel Bar	1	E-250001ST	Satin

\* Grayed parts are not available individually. "Assembled" item required.

by Associated Marketing Concepts  
21624 Marilla Street, Chatsworth, CA 91311-4123  
(800) 270-4262 \* (818) 678-1651 \* FAX (818) 678-1655  
www.ambassador-amc.com