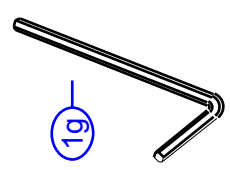
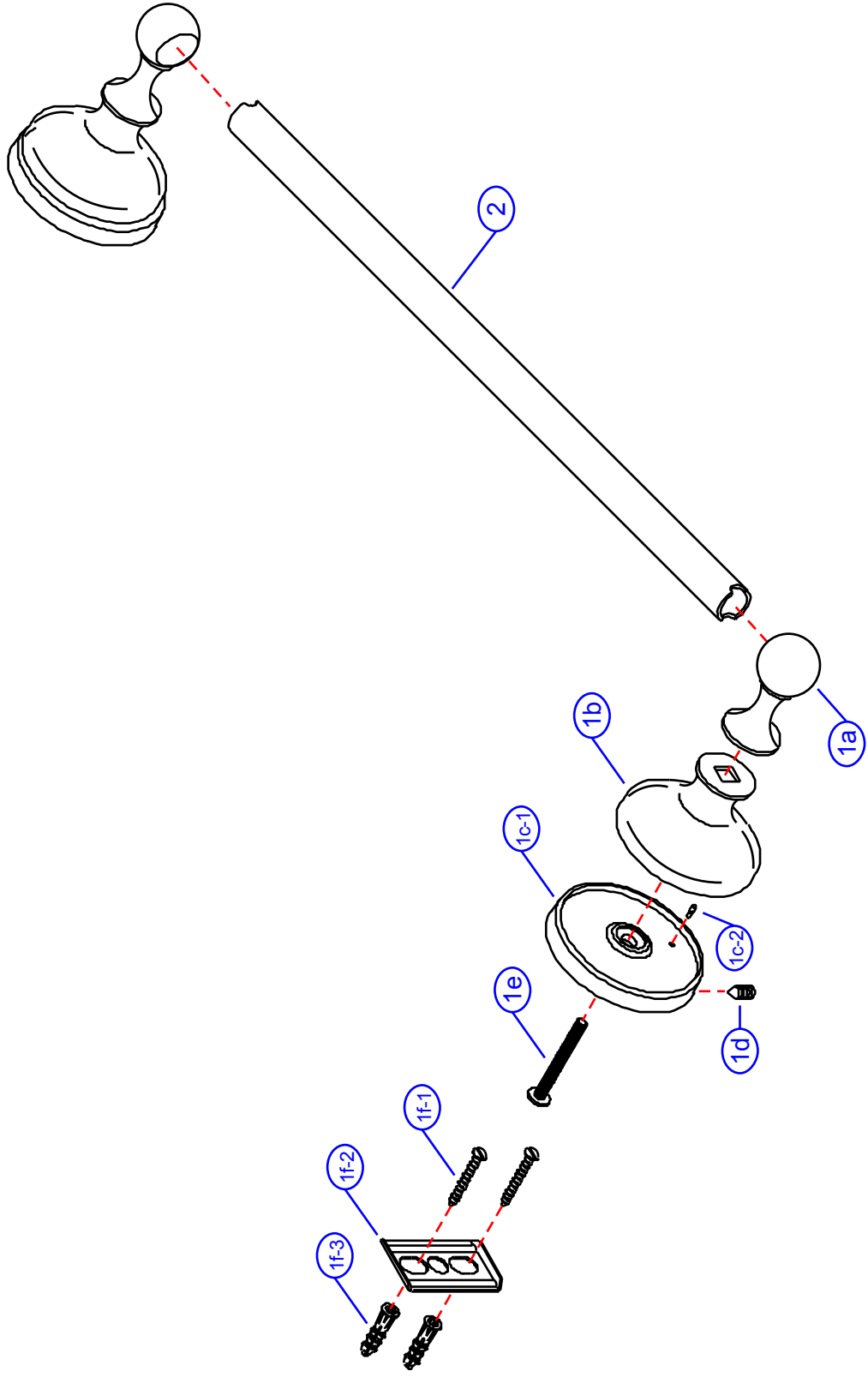


20-SDC

by Associated Marketing Concepts
 21624 Marilla Street, Chatsworth, CA 91311-4123
 (800) 270-4262 | (818) 678-1651 | FAX (818) 678-1655
 www.ambassador-amc.com



By	SS	Main Finish	Satin	Model #	20-SDC
Modified/Approved	2-9-04	Accent Finish	Dura-Life Finish / Chrome	Series	Universal
Fulfillment	A663096SY+A250931CP	Valve	NA	Type	30" Towel Bar



20-SDC



Universal 30" Towel Bar- SDC

#	Description	Quantity	Part #	Finish
1	Towel Bar Post Set (Assembled)	1	EA-663096SY	Satin/Dura-Life Finish
1a	Post Head	2	E-240003YP*	Dura-Life Finish
1b	Body	2	E-240001ST*	Satin
1c	Base (Assembled)	2	EA-241311YP*	Dura-Life Finish
1c-1	Base	2	E-241011YP*	Dura-Life Finish
1c-2	Pin	2	E-255115*	Metal
1d	Set Screw	2	E-075039	Metal
1e	Post Screw	2	E-075088ZN*	Metal
1f	Mounting Hardware	2	EA-290131	Metal/Plastic
1f-1	Mounting Screws	4	E-053022ZN*	Metal
1f-2	Wall Plate	2	E-293000ZN*	Metal
1f-3	Screw Mollies	4	E-291001*	Plastic
1g	Allen Key	1	E-031000	Metal
2	30" Towel Bar	1	E-250931CP	Chrome

* Grayed parts are not available individually. "Assembled" item required.

by Associated Marketing Concepts
 21624 Marilla Street, Chatsworth, CA 91311-4123
 (800) 270-4262 * (818) 678-1651 * FAX (818) 678-1655
www.ambassador-amc.com