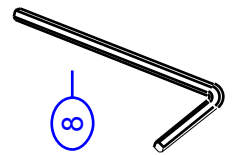
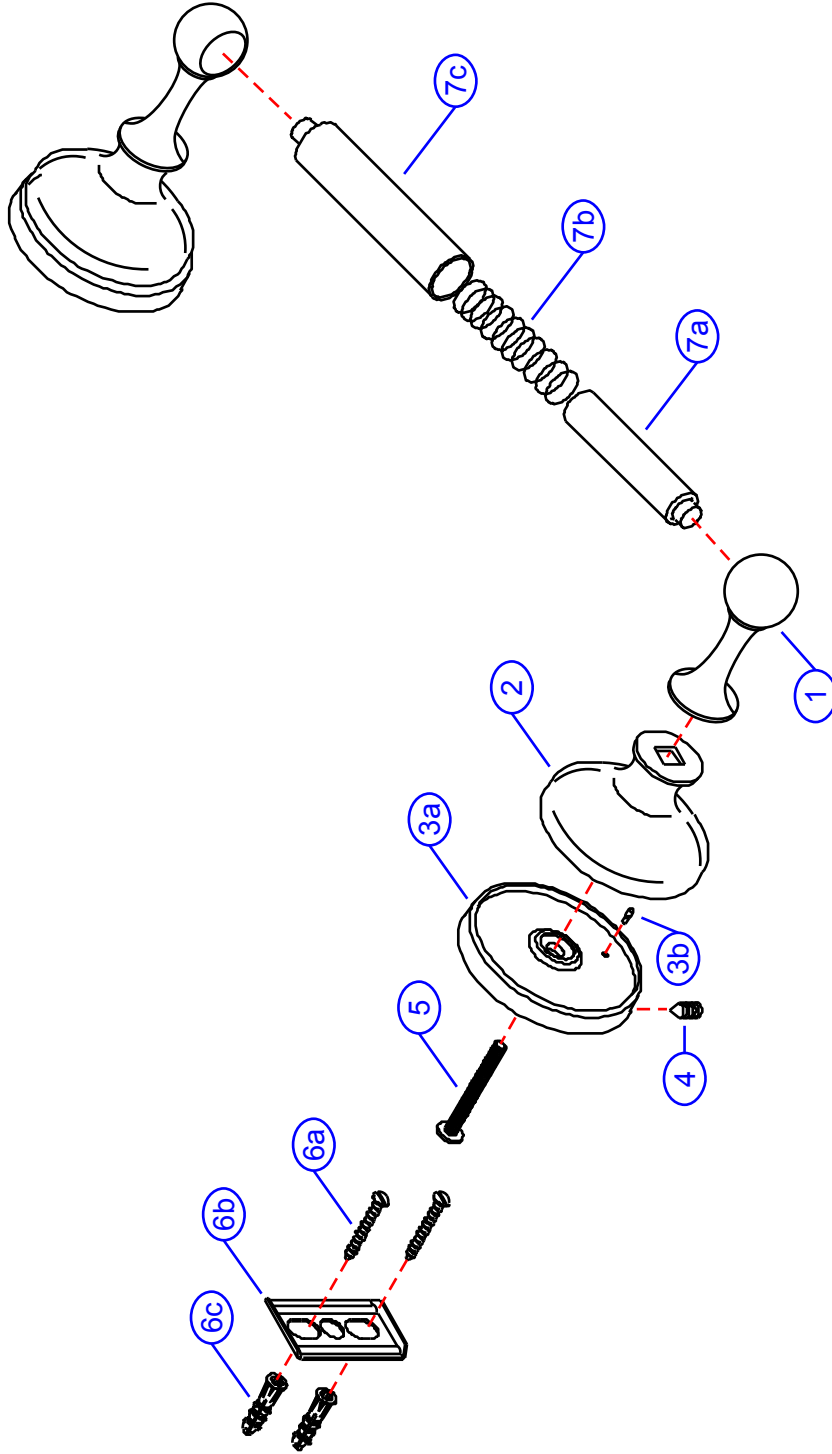


24-SD

by Associated Marketing Concepts
 21624 Marilla Street, Chatsworth, CA 91311-4123
 (800) 270-4262 | (818) 678-1651 | FAX (818) 678-1655
 www.ambassador-amc.com



By	SS	Main Finish	Satin	Model #	24-SD
Modified/Approved	4-29-04	Accent Finish	Dura-Life Finish	Series	Universal
Fulfillment	B5030000SY	Valve	NA	Type	Toilet Paper Holder



24-SD



Universal Toilet Paper Holder- SD

#	Description	Quantity	Part #	Finish
1	Post Head	2	E-242251YP*	Dura-Life Finish
2	Body	2	E-240001ST*	Satin
3	Base (Assembled)	2	EA-241311YP*	Dura-Life Finish
3a	Base	2	E-241011YP*	Dura-Life Finish
3b	Pin	2	E-255115*	Metal
4	Set Screw	2	E-075039	Metal
5	Post Screw	2	E-075093ZN*	Metal
6	Mounting Hardware	2	EA-290131	Metal
6a	Mounting Screws	4	E-053022ZN*	Metal
6b	Wall Plate	2	E-293000ZN*	Metal
6c	Screw Mollies	4	E-291001*	Plastic
7	Toilet Paper Roller (Assembled)	1	EA-254110ST	Satin
7a	Roller End (Male)	1	E-254026ST*	Satin
7b	Spring	1	E-292010*	Metal
7c	Roller End (Female)	1	E-254025ST*	Satin
8	Allen Key	1	E-031000	Metal

* Grayed parts are not available individually. "Assembled" item required.