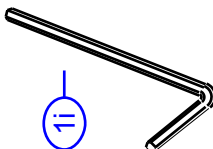
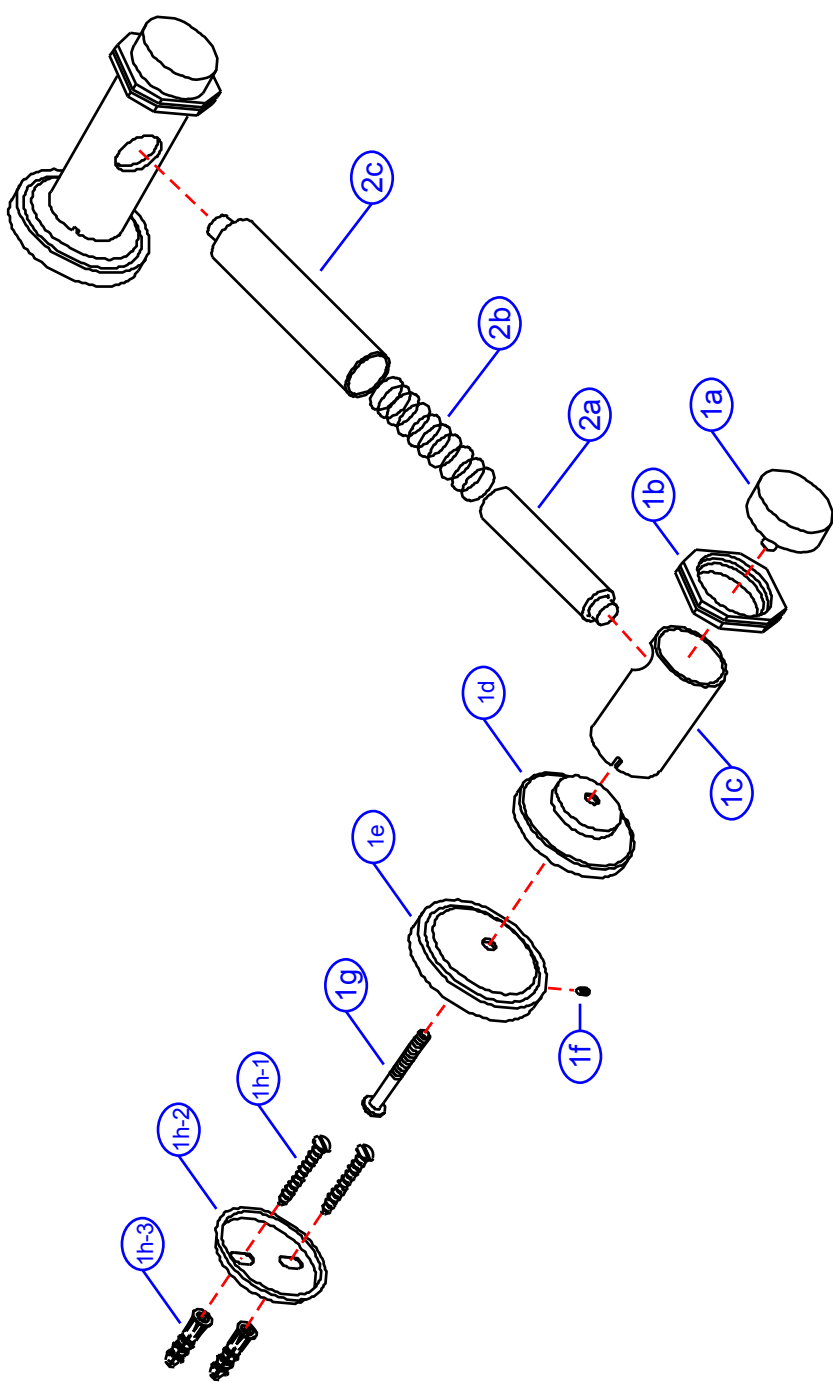


34-H

by Associated Marketing Concepts
 21624 Manilla Street, Chatsworth, CA 91311-4123
 (800) 270-4262 | (818) 678-1651 | FAX (818) 678-1655
 www.ambassador-amc.com



By	SS	Main Finish	Chrome	Model #	34-H
Modified/Approved	11-18-04	Accent Finish	18k Gold	Series	Hex Ring
Fulfillment	A663587CG+A254110CP	Valve	NA	Type	Toilet Paper Holder



34-H



Hex Ring Toilet Paper Holder- CG

#	Description	Quantity	Part #	Finish
1	Towel Bar Post Set (Assembled)	1	EA-663587CG	Chrome/Gold
1a	Cap	2	E-243091CP	Chrome
1b	Hex Ring Ring	2	E-243807GP	Gold
1c	Body	2	E-240031CP*	Chrome
1d	Base Cover	2	E-241031GP*	Gold
1e	Base	2	E-241010ZN*	Metal
1f	Set Screw	2	E-075038	Metal
1g	Post Screw	2	E-075066ZN*	Metal
1h	Mounting Hardware	2	EA-290015	Metal/Plastic
1h-1	Mounting Screws	4	E-053022ZN*	Metal
1h-2	Wall Plate	2	E-293002ZN*	Metal
1h-3	Screw Mollies	4	E-291001*	Plastic
1i	Allen Key	1	E-031000	Metal
2	Toilet Paper Roller (Assembled)	1	EA-254110CP	Chrome
2a	Roller End (Male)	1	E-254026CP*	Chrome
2b	Spring	1	E-292010*	Metal
2c	Roller End (Female)	1	E-254025CP*	Chrome

* Grayed parts are not available individually. "Assembled" item required.