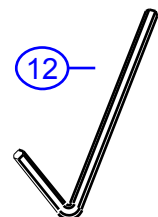
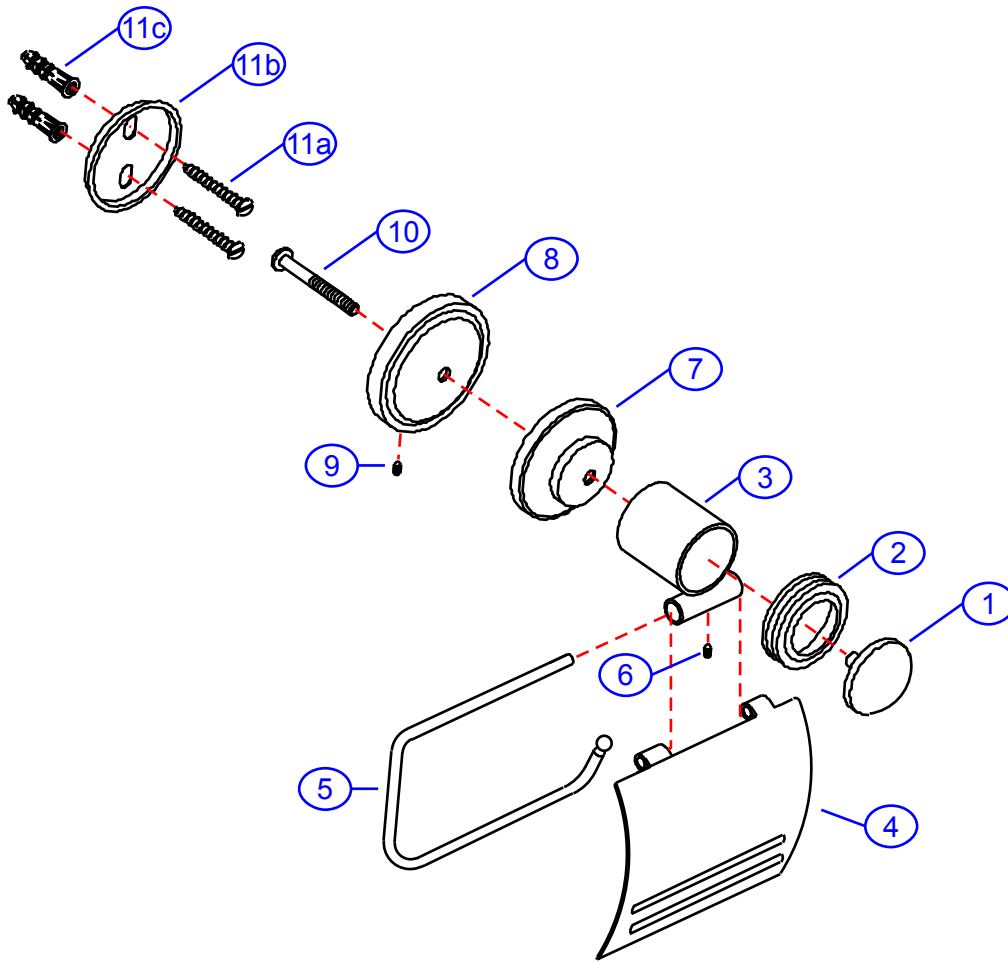


# 34-M-1

by Associated Marketing Concepts  
21624 Marilla Street, Chatsworth, CA 91311-4123  
(800) 270-4262 • (818) 678-1651 • FAX (818) 678-1655  
www.ambassador-amc.com



|                   |         |               |          |         |                         |
|-------------------|---------|---------------|----------|---------|-------------------------|
| By                | SS      | Main Finish   | Chrome   | Model # | 34-M-1                  |
| Modified/Approved | 12-6-04 | Accent Finish | 18k Gold | Series  | Multi-Ring              |
| Fulfillment       | xxxxCG  | Valve         | NA       | Type    | Single Post T.P. Holder |



# 34-M-1



## Multi-Ring Single Post Toilet Paper Holder- CG

| #   | Description       | Quantity | Part #      | Finish        |
|-----|-------------------|----------|-------------|---------------|
| 1   | Cap               | 1        | E-243051CP* | Chrome        |
| 2   | Multi-Ring Ring   | 1        | E-243915GP* | Gold          |
| 3   | Body              | 1        | E-245108CP* | Chrome        |
| 4   | Paper Cover       | 1        | E-256121CP* | Chrome        |
| 5   | Paper Holder      | 1        | E-251551CP* | Chrome        |
| 6   | Set Screw         | 1        | E-292155ZN  | Metal         |
| 7   | Base Cover        | 1        | E-241031GP* | Gold          |
| 8   | Base              | 1        | E-241010ZN* | Metal         |
| 9   | Set Screw         | 1        | E-075038    | Metal         |
| 10  | Post Screw        | 1        | E-075064ZN  | Metal         |
| 11  | Mounting Hardware | 1        | EA-290015   | Metal/Plastic |
| 11a | Mounting Screws   | 2        | E-053022ZN* | Metal         |
| 11b | Wall Plate        | 1        | E-293002ZN* | Metal         |
| 11c | Mollies           | 2        | E-291001*   | Plastic       |
| 12  | Allen Key         | 1        | E-031000    | Metal         |

\* Grayed parts are not available individually. "Assembled" item required.