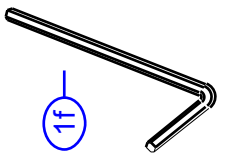
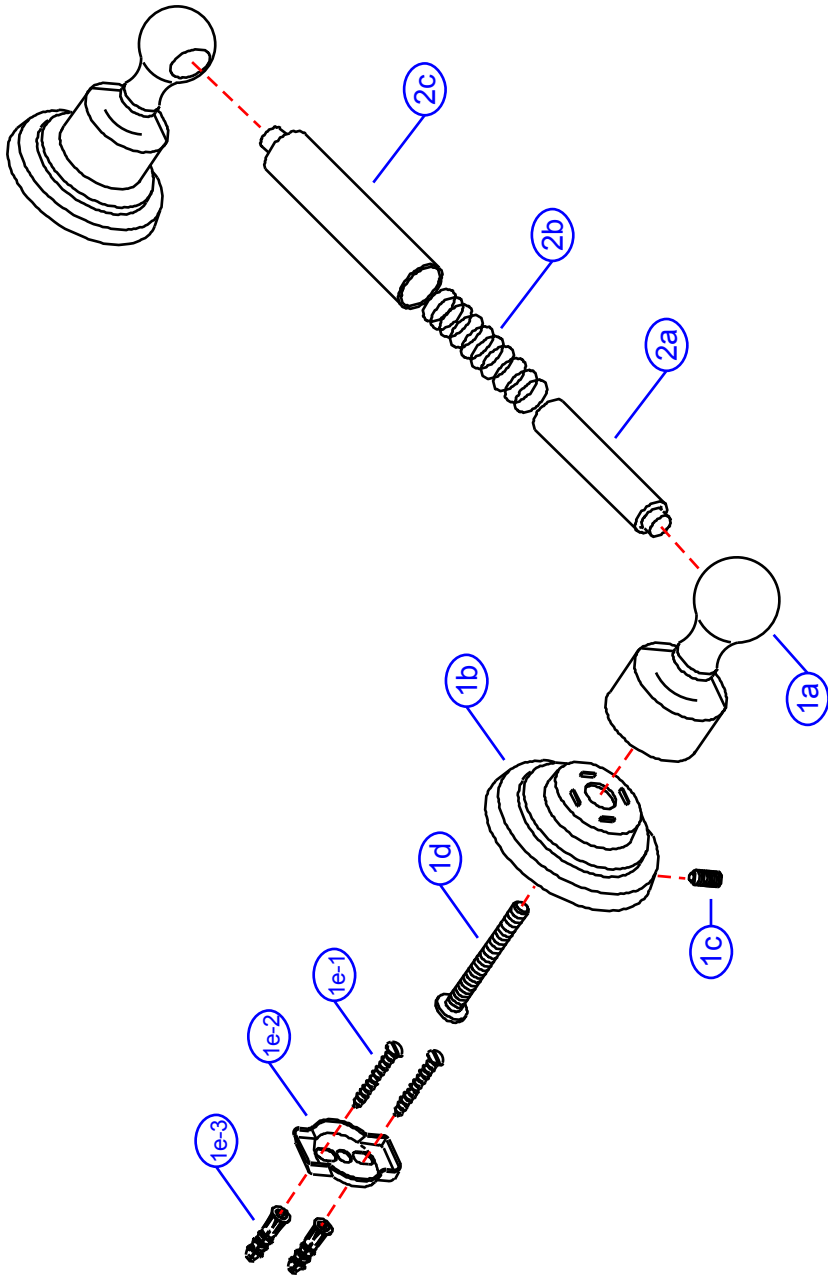


34-W

by Associated Marketing Concepts
 21624 Marilla Street, Chatsworth, CA 91311-4123
 (800) 270-4262 | (818) 678-1651 | FAX (818) 678-1655
 www.ambassador-amc.com



By	SS	Main Finish	Satin	Model #	34-W
Modified/Approved	4-29-04	Accent Finish	None	Series	Bar-Lever
Fulfillment	A663455ST+A254110ST	Valve	NA	Type	Toilet Paper Holder



34-W



Bar-Lever Toilet Paper Holder- ST

#	Description	Quantity	Part #	Finish
1	Towel Bar Post Set (Assembled)	1	EA-663455ST	Satin/Chrome
1a	Post Head	2	E-240042ST*	Satin
1b	Base	2	E-241041ST*	Satin
1c	Set Screw	2	E-075039	Metal
1d	Post Screw	2	E-065024ZN*	Metal
1e	Mounting Hardware	2	EA-290013	Metal /Plastic
1e-1	Mounting Screws	4	E-053022ZN*	Metal
1e-2	Wall Plate	2	E-293003ZN*	Metal
1e-3	Mollies	4	E-291001*	Plastic
1f	Allen Key	1	E-031000	Metal
2	Toilet Paper Roller (Assembled)	1	EA-254110ST	Satin
2a	Roller End (Male)	1	E-254026ST*	Satin
2b	Spring	1	E-292010*	Metal
2c	Roller End (Female)	1	E-254025ST*	Satin

* Grayed parts are not available individually. "Assembled" item required.

by Associated Marketing Concepts
21624 Marilla Street, Chatsworth, CA 91311-4123
(800) 270-4262 * (818) 678-1651 * FAX (818) 678-1655
www.ambassador-amc.com