

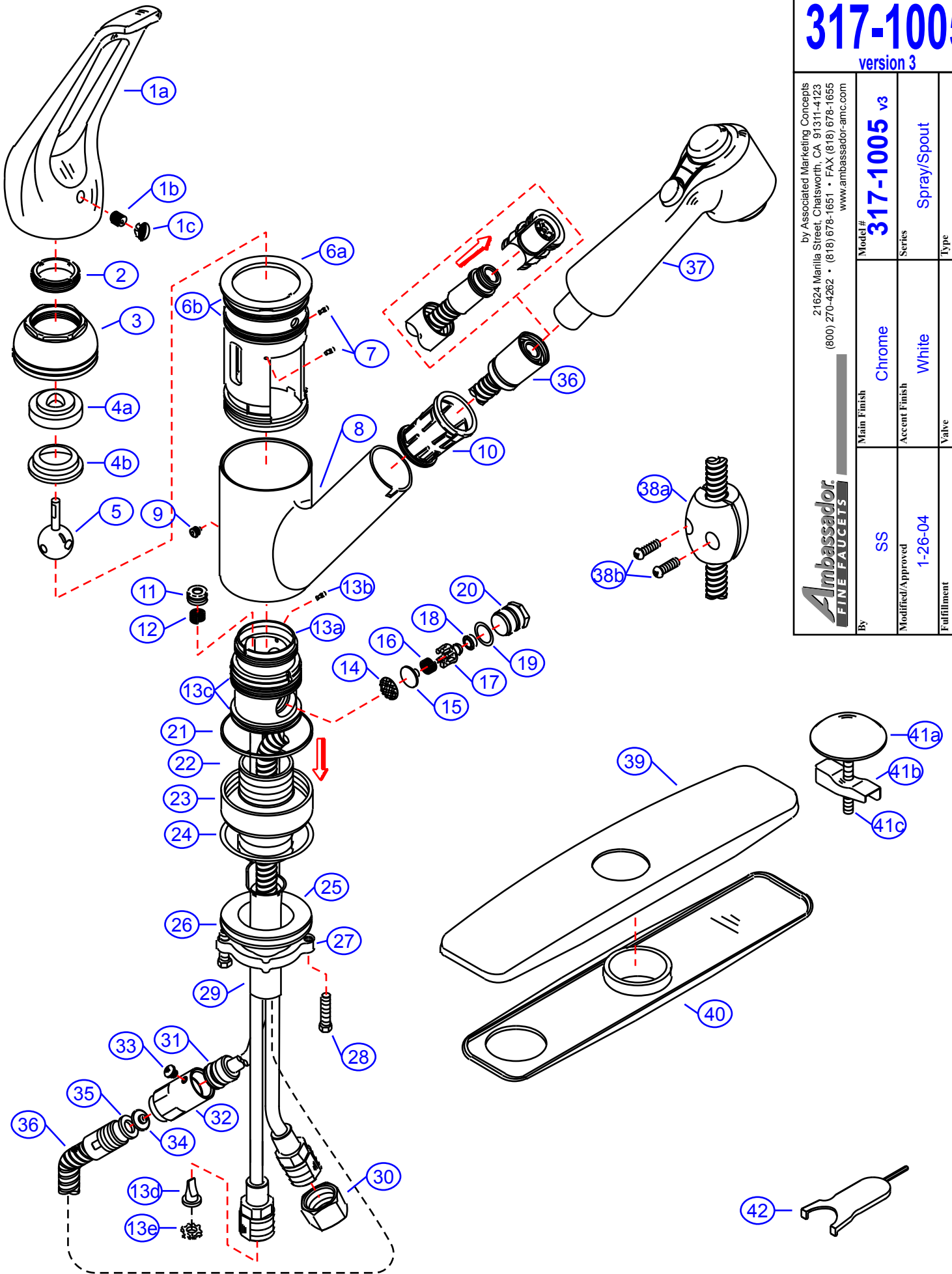
317-1005

version 3

by Associated Marketing Concepts
21624 Marilla Street, Chatsworth, CA 91311-4123
(800) 270-4262 • (818) 678-1651 • FAX (818) 678-1655
www.ambassador-amc.com

Ambassador
FINE FAUCETS

| | | | |
|-------------------|--------------------|-------------------|-------------------|
| Model # | 317-1005 v3 | | |
| Series | 317-1005 v3 | | |
| Type | Pull-Out Kitchen | | |
| Main Finish | Chrome | White | Ball (Washerless) |
| Accent Finish | White | | |
| Valve | | | |
| By | SS | Modified/Approved | xxxxCW |
| Modified/Approved | | 1-26-04 | |
| Fulfillment | | | |



317-1005 v3



Spray/Spout Kitchen Faucet- CW

| # | Description | Quantity | Part # | Finish |
|-----|------------------------------|----------|---------------|-----------------|
| 1 | Handle (Assembled) | 1 | EA-662511CP | Chrome |
| 1a | Handle | 1 | E-029012CP* | Chrome |
| 1b | Set Screw | 1 | E-008102 | Metal |
| 1c | Blue/Red Plug | 1 | E-028020 | Plastic |
| 2 | Adjusting Ring | 1 | E-104001 | Brass |
| 3 | Cap | 1 | E-103008CP | Chrome |
| 4 | Cam Packing | 1 | EA-663000N | Plastic/Rubber |
| 4a | Cam | 1 | E-201000* | Plastic |
| 4b | Packing | 1 | E-102000N* | Rubber |
| 5 | Ball Assembly | 1 | E-040004 | Metal |
| 6 | White Body Housing | 1 | EA-663458WH-2 | Plastic/Rubber |
| 6a | Body Housing | 1 | E-301012WH-2* | Plastic |
| 6b | O-Ring | 2 | E-004045 | Rubber |
| 7 | Pin | 2 | E-003000 | Metal |
| 8 | Spout Hub | 1 | E-300201CP | Chrome |
| 9 | Hub Set Screw | 1 | E-008026 | Metal |
| 10 | Hose Nest | 1 | E-126000 | Plastic |
| 11 | Seat | 2 | E-101000N | Rubber |
| 12 | Spring | 2 | E-005000 | Metal |
| 13 | Valve (Assembled) | 1 | G-XXXX* | Brass/Copper |
| 13a | Valve Body | 1 | E-002009N* | Brass |
| 13b | Pin | 1 | E-003000* | Metal |
| 13c | O-Ring | 2 | E-004057 | Rubber |
| 13d | Inlet Anti-Siphon Valve | 2 | E-010033N* | Rubber |
| 13e | Inlet Anti-Siphon Valve Lock | 2 | E-013005* | Metal |
| 14 | IVB Component | 1 | E-022005* | Metal |
| 15 | IVB Component | 1 | E-034013N* | Plastic |
| 16 | IVB Component | 1 | E-005012* | Metal |
| 17 | IVB Component | 1 | E-208011N* | Plastic |
| 18 | IVB Component | 1 | E-010008N* | Rubber |
| 19 | IVB Component | 1 | E-004079N* | Rubber |
| 20 | IVB Component | 1 | E-033007NCP* | Chrome |
| 21 | White Packing Ring | 1 | E-207001WH | Plastic |
| 22 | Mounting Shaft | 1 | G-XXXX* | Brass |
| 23 | Base | 1 | E-034001CP* | Chrome |
| 24 | O-Ring | 1 | E-004069 | Rubber |
| 25 | Rubber Washer | 1 | E-010021 | Rubber |
| 26 | Metal Washer | 1 | E-013010NI | Metal |
| 27 | Lock Nut | 1 | E-009046 | Brass |
| 28 | Lock Nut Screws | 2 | E-008045 | Metal |
| 29 | Hose Guide | 1 | E-227001 | Plastic |
| 30 | Connector Nuts | 2 | E-009016 | Brass |
| 31 | O-Ring | 1 | E-004002N | Rubber |
| 32 | Pipe Adapter | 1 | E-021004N | Brass |
| 33 | Pipe Adapter Screw | 1 | E-008048 | Metal |
| 34 | Water Restrictor | 1 | E-113122N | Plastic |
| 35 | Pipe Adapter Washer | 1 | E-010035N | Rubber |
| 36 | Flex Hose | 1 | E-511002NCP | Stainless Steel |
| 37 | Spout Head | 1 | E-523028WH | White |
| 38 | Weight w/Screws | 1 | EA-504079 | Metal |
| 38a | Weight | 1 | G-XXXX* | Lead |
| 38b | Screws | 2 | G-XXXX* | Metal |
| 39 | Cover Plate | 1 | E-007045CP | Chrome |
| 40 | Gasket | 1 | E-011037 | Plastic |
| 41 | Hole Cover (Assembled) | 1 | EA-504091CP | Chrome |
| 41a | Cover | 1 | G-XXXX* | Chrome |
| 41b | Wing Nut | 1 | G-XXXX* | Metal |
| 41c | Bolt | 1 | G-XXXX* | Metal |
| 42 | Allen Key | 1 | E-031022NI | Metal |

* Grayed parts are not available individually. "Assembled" item required.