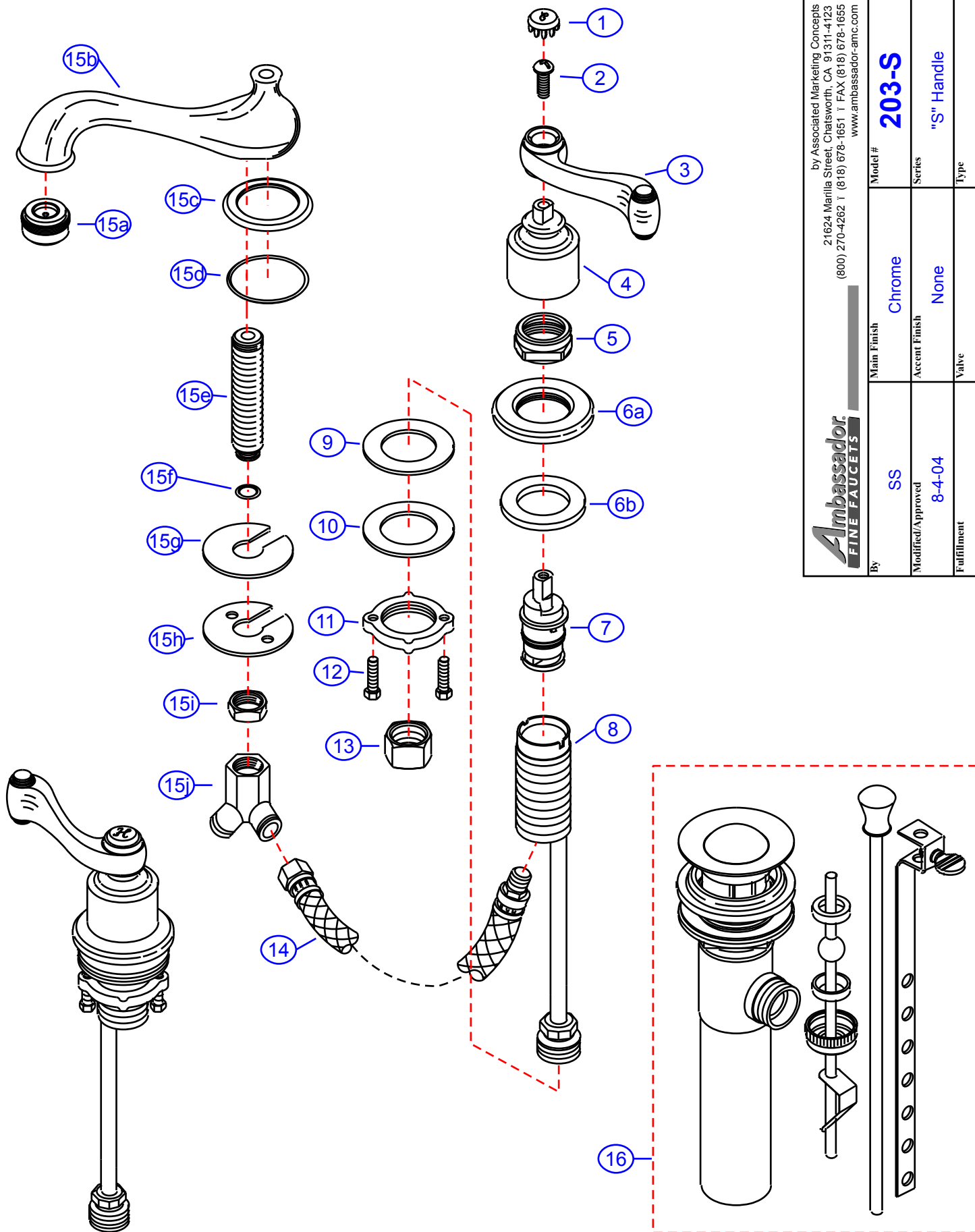


203-S

by Associated Marketing Concepts
 21624 Marilla Street, Chatsworth, CA 91311-4123
 (800) 270-4262 | (818) 678-1651 | FAX (818) 678-1655
 www.ambassador-amc.com

Ambassador
 FINE FAUCETS

By	SS	Main Finish	Chrome	Model #	203-S
Modified/Approved	8-4-04	Accent Finish	None	Series	"S" Handle
Fulfillment	FM0A8200CP	Valve	Ceramic Disk	Type	4" Mini-Spread Lav.



203-S



"S" Handle 4" Mini Spread Lav- CD/CP

#	Description	Quantity	Part #	Finish
1	Cap "H"	1	E-206041HCP	Chrome
	Cap "C"	1	E-206041CCP	Chrome
2	Screw	2	E-008044CP	Metal
3	"S" Handle (Hot)	1	E-108036HCP	Chrome
	"S" Handle (Cold)	1	E-108036CCP	Chrome
4	Canopy (Hot)	1	E-018154HCP	Chrome
	Canopy (Cold)	1	E-018154CCP	Chrome
5	Retainer Nut	2	E-016002CP	Chrome
6	Escutcheon (Assembled)	2	EA-663201CP	Chrome
6a	Escutcheon	2	E-204000CP*	Chrome
6b	Escutcheon Washer	2	E-010020	Rubber
7	Cartridge (Hot)	1	E-507003NH	Ceramic Disc
	Cartridge (Cold)	1	E-507003NC	Ceramic Disc
8	Valve Body	2	E-002027N	Brass
9	Rubber Washer	2	E-010017	Rubber
10	Metal Washer	2	E-013018NI	Metal
11	Lock Nut	2	E-009012	Brass
12	Screws	4	E-008045	Metal
13	Connector Nuts	2	E-009016	Brass
14	Hose	2	E-105007N	Hose
15	Spout (Assembled)	1	EA-666608CP	Chrome
15a	Aerator	1	E-500013NCP	Chrome
15b	Spout	1	E-100016NCP*	Chrome
15c	Spout Base	1	E-303001CP	Chrome
15d	O-Ring	1	E-048036	Rubber
15e	Shank	1	E-014011N*	Brass
15f	O-Ring	1	E-004026	Rubber
15g	Rubber Spout Washer	1	E-058094	Rubber
15h	Metal Spout Washer	1	E-013006NI	Metal
15i	Spout Nut	1	E-009015	Brass
15j	"Y" Connector	1	E-015004N	Brass
16	Drain Kit (see "Drains" for parts)	1	EA-505039CPL	Chrome

* Grayed parts are not available individually. "Assembled" item required.

by Associated Marketing Concepts
21624 Marilla Street, Chatsworth, CA 91311-4123
(800) 270-4262 * (818) 678-1651 * FAX (818) 678-1655
www.ambassador-amc.com