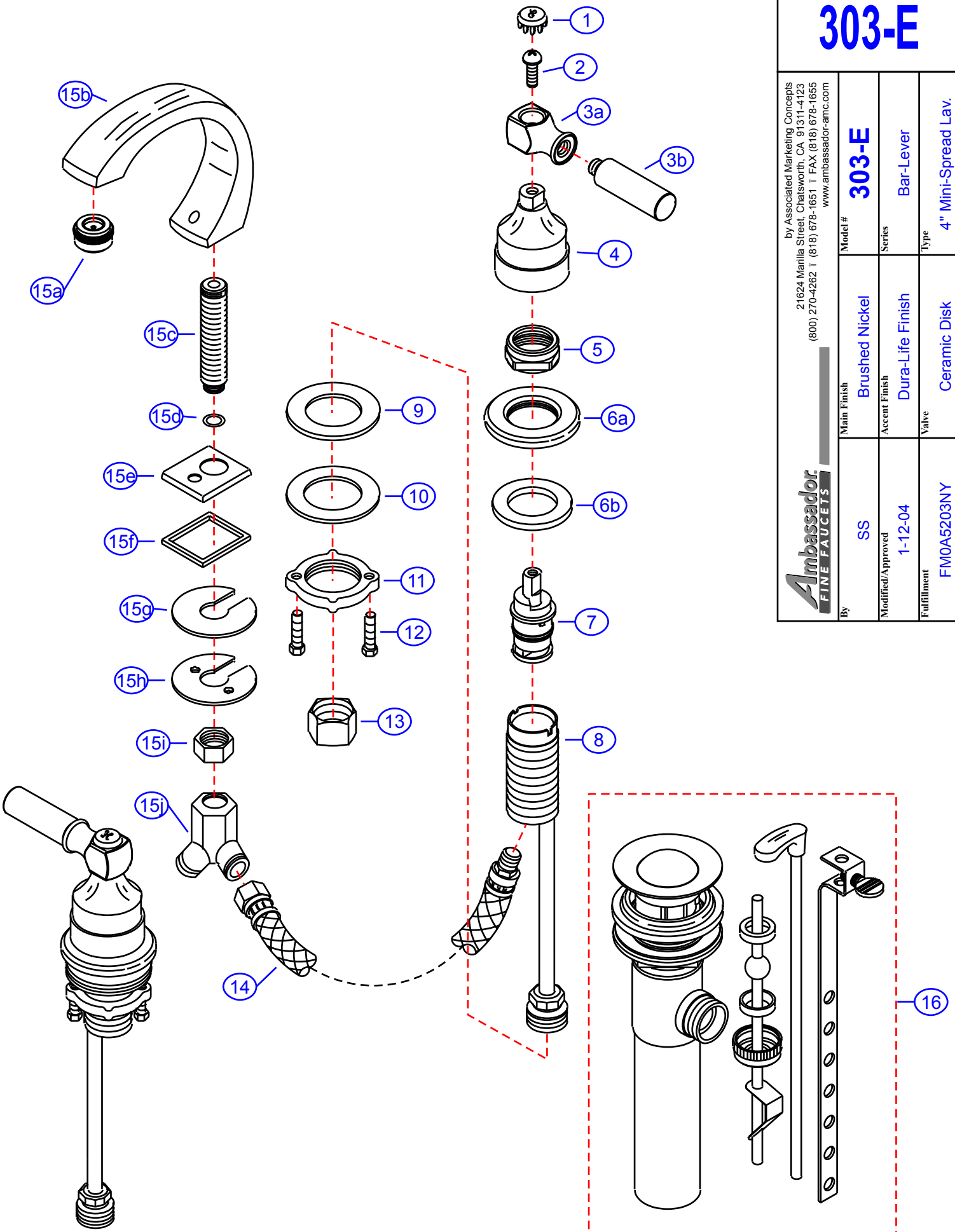


303-E

by Associated Marketing Concepts
 21624 Manilla Street, Chatsworth, CA 91311-4123
 (800) 270-4262 | (818) 678-1651 | FAX (818) 678-1655
 www.ambassador-amc.com



| | | | | | |
|-------------------|------------|---------------|------------------|---------|---------------------|
| By | SS | Main Finish | Brushed Nickel | Model # | 303-E |
| Modified/Approved | 1-12-04 | Accent Finish | Dura-Life Finish | Series | Bar-Lever |
| Fulfillment | FM0A5203NY | Valve | Ceramic Disk | Type | 4" Mini-Spread Lav. |



303-E



Bar-Lever 4" Mini-Spread Lav- CD/NY

| # | Description | Quantity | Part # | Finish |
|-----|------------------------------------|----------|--------------|---------------------------------|
| 1 | Cap "H" | 1 | E-206041HNP | Brushed Nickel |
| | Cap "C" | 1 | E-206041CNP | Brushed Nickel |
| 2 | Handle Screw | 2 | E-008037CP | Metal |
| 3 | Handle | 2 | EA-662048YP | Dura-Life Finish |
| 3a | Handle Head | 2 | E-107047YP* | Dura-Life Finish |
| 3b | Handle Tip | 2 | E-552030YP* | Dura-Life Finish |
| 4 | Handle Canopy (Hot) | 1 | E-018027HNP | Brushed Nickel |
| | Handle Canopy (Cold) | 1 | E-018027CNP | Brushed Nickel |
| 5 | Retainer Nut | 2 | E-016002CP | Chrome |
| 6 | Escutcheon (Assembled) | 2 | EA-663201YP | Dura-Life Finish |
| 6a | Escutcheon | 2 | E-204000YP* | Dura-Life Finish |
| 6b | Gasket | 2 | E-010020 | Rubber |
| 7 | Cartridge (Hot) | 1 | E-507003NH | Ceramic Disc |
| | Cartridge (Cold) | 1 | E-507003NC | Ceramic Disc |
| 8 | Valve Body | 2 | E-002027N | Brass |
| 9 | Rubber Washer | 2 | E-010017 | Rubber |
| 10 | Metal Washer | 2 | E-013018NI | Metal |
| 11 | Lock Nut | 2 | E-009012 | Brass |
| 12 | Screw | 4 | E-008045 | Metal |
| 13 | Connector Nuts | 2 | E-009016 | Brass |
| 14 | Hose | 2 | E-105007N | Hose |
| 15 | Spout (Assembled) | 1 | EA-666507NY | Brushed Nickel/Dura-Life Finish |
| 16a | Aerator | 1 | E-500013NYP | Dura-Life Finish |
| 16b | Spout | 1 | E-132077NNP* | Brushed Nickel |
| 16c | Shank | 1 | E-014011N* | Brass |
| 16d | O-Ring | 1 | E-004026N | Rubber |
| 16e | Spout Base | 1 | E-303006YP | Dura-Life Finish |
| 16f | Spout Base Washer | 1 | E-010041 | Rubber |
| 16g | Rubber Spout Washer | 1 | E-058094 | Rubber |
| 16h | Metal Spout Washer | 1 | E-013006NI | Metal |
| 16i | Spout Nut | 1 | E-009015 | Brass |
| 16j | "Y" Connector | 1 | E-015004N | Brass |
| 17 | Drain Kit (see "Drains" for parts) | 1 | EA-505006NY | Brushed Nickel/Dura-Life Finish |

* Grayed parts are not available individually. "Assembled" item required.

by Associated Marketing Concepts
 21624 Marilla Street, Chatsworth, CA 91311-4123
 (800) 270-4262 * (818) 678-1651 * FAX (818) 678-1655
 www.ambassador-amc.com