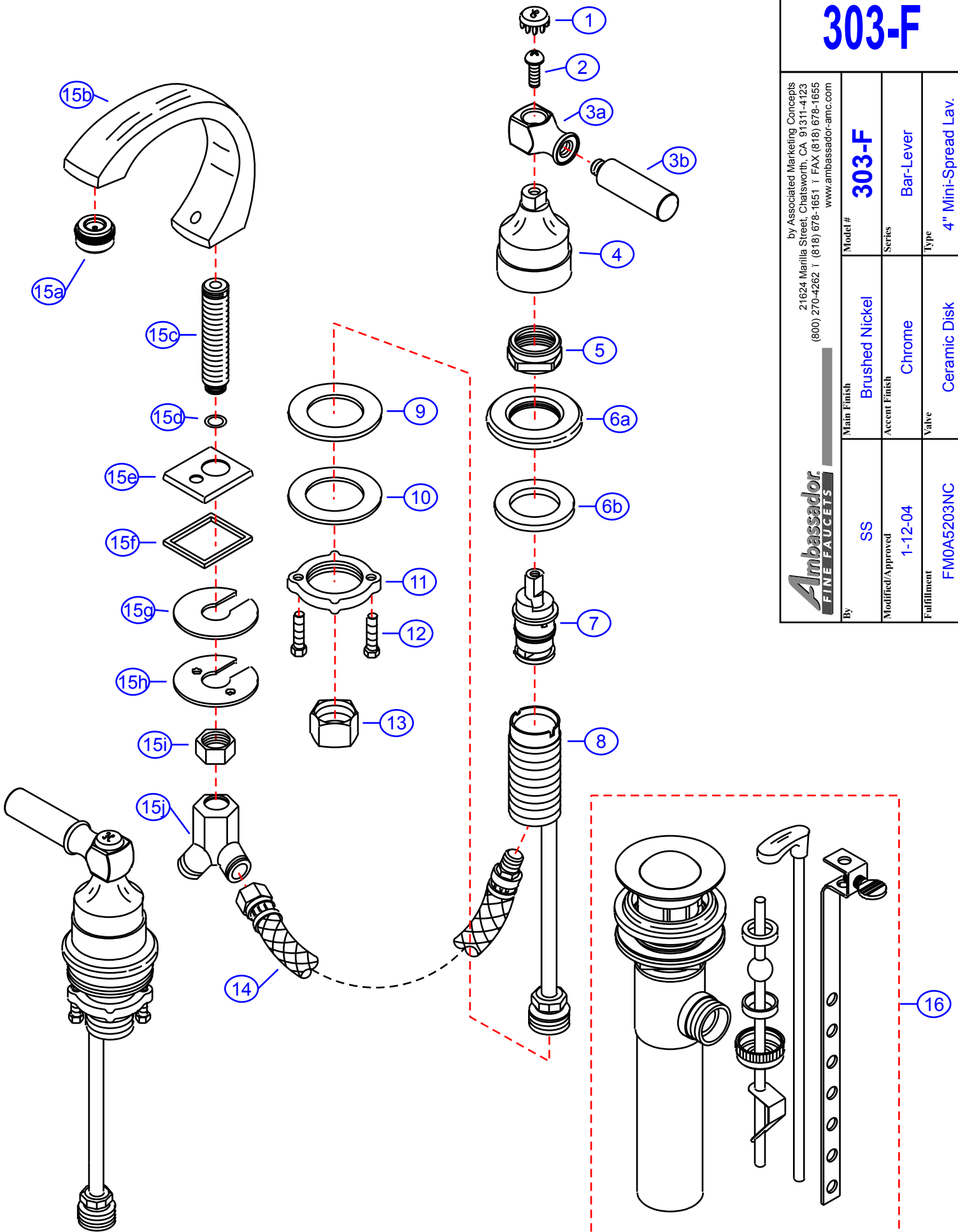


303-F

by Associated Marketing Concepts
 21624 Manilla Street, Chatsworth, CA 91311-4123
 (800) 270-4262 | (818) 678-1651 | FAX (818) 678-1655
 www.ambassador-amc.com



By	SS	Main Finish Brushed Nickel	Model # 303-F
Modified/Approved 1-12-04		Accent Finish Chrome	Series Bar-Lever
Fulfillment FM0A5203NC		Valve Ceramic Disk	Type 4" Mini-Spread Lav.



303-F



Bar-Lever 4" Mini-Spread Lav- CD/NC

#	Description	Quantity	Part #	Finish
1	Cap "H"	1	E-206041HNP	Brushed Nickel
	Cap "C"	1	E-206041CNP	Brushed Nickel
2	Handle Screw	2	E-008037CP	Metal
3	Handle	2	EA-662048CP	Chrome
3a	Handle Head	2	E-107047CP*	Chrome
3b	Handle Tip	2	E-552030CP*	Chrome
4	Handle Canopy (Hot)	1	E-018027HNP	Brushed Nickel
	Handle Canopy (Cold)	1	E-018027CNP	Brushed Nickel
5	Retainer Nut	2	E-016002CP	Chrome
6	Escutcheon (Assembled)	2	EA-663201CP	Chrome
6a	Escutcheon	2	E-204000CP*	Chrome
6b	Gasket	2	E-010020	Rubber
7	Cartridge (Hot)	1	E-507003NH	Ceramic Disc
	Cartridge (Cold)	1	E-507003NC	Ceramic Disc
8	Valve Body	2	E-002027N	Brass
9	Rubber Washer	2	E-010017	Rubber
10	Metal Washer	2	E-013018NI	Metal
11	Lock Nut	2	E-009012	Brass
12	Screw	4	E-008045	Metal
13	Connector Nuts	2	E-009016	Brass
14	Hose	2	E-105007N	Hose
15	Spout (Assembled)	1	EA-666507NC	Brushed Nickel/Chrome
15a	Aerator	1	E-500013NCP	Chrome
15b	Spout	1	E-132077NNP*	Brushed Nickel
15c	Shank	1	E-014011N*	Brass
15d	O-Ring	1	E-004026N	Rubber
15e	Spout Base	1	E-303006CP	Chrome
15f	Spout Base Washer	1	E-010041	Rubber
15g	Rubber Spout Washer	1	E-058094	Rubber
15h	Metal Spout Washer	1	E-013006NI	Metal
15i	Spout Nut	1	E-009015	Brass
15j	"Y" Connector	1	E-015004N	Brass
16	Drain Kit (see "Drains" for parts)	1	EA-505006NC	Brushed Nickel/Chrome

* Grayed parts are not available individually. "Assembled" item required.

by Associated Marketing Concepts
 21624 Marilla Street, Chatsworth, CA 91311-4123
 (800) 270-4262 * (818) 678-1651 * FAX (818) 678-1655
 www.ambassador-amc.com