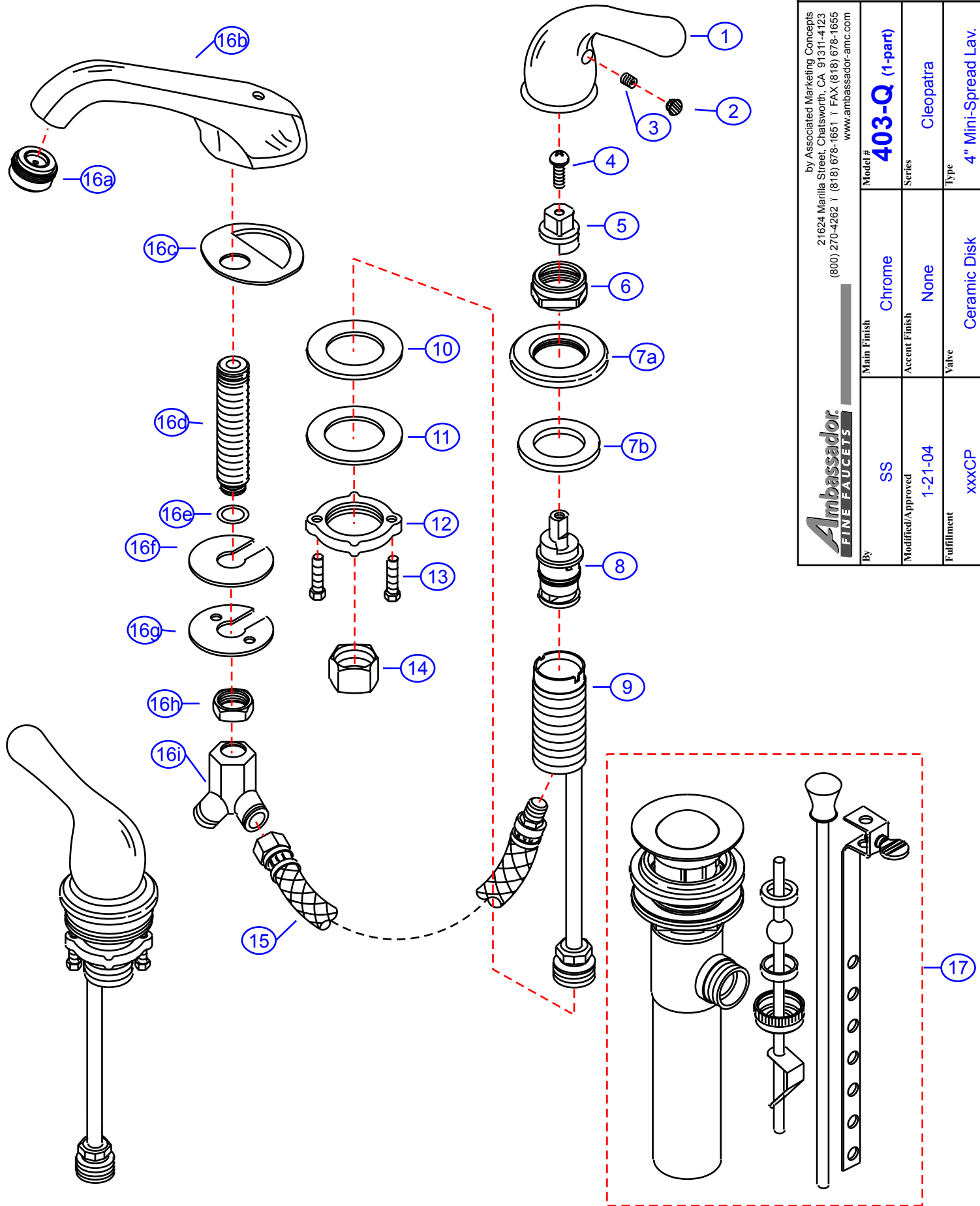


403-Q

(1-part)

by Associated Marketing Concepts
 21624 Marilla Street, Chatsworth, CA 91311-4123
 (800) 270-4262 | (818) 678-1651 | FAX (818) 678-1655
 www.ambassador-amc.com

Model #	403-Q (1-part)		
Series	Cleopatra		
Type	4" Mini-Spread Lav.		
Main Finish	Chrome	Accent Finish	None
Valve	Ceramic Disk		
By	SS	Modified/Approved	1-21-04
Fulfillment	xxxCP		



403-Q (1-part)



Cleopatra 4" Mini-Spread Lav- CD/CP

#	Description	Quantity	Part #	Finish
1	Handle	2	E-029032CP	Chrome
2	Red Plug	1	E-028046H	Rubber
	Blue Plug	1	E-028046C	Rubber
3	Set Screw	2	E-008003	Metal
4	Screw	2	E-008044CP	Chrome
5	Adapter (Hot)	1	E-110114H	Plastic
	Adapter (Cold)	1	E-110114C	Plastic
6	Retainer Nut	2	E-016002CP	Chrome
7	Escutcheon (Assembled)	2	EA-663201CP	Chrome
7a	Escutcheon	2	E-204000CP*	Chrome
7b	Washer	2	E-010020	Rubber
8	Cartridge (Hot)	1	E-507003NH	Ceramic Disc
	Cartridge (Cold)	1	E-507003NC	Ceramic Disc
9	Valve Body	2	E-002027N	Brass
10	Rubber Washer	2	E-010017	Rubber
11	Metal Washer	2	E-013018NI	Metal
12	Lock Nut	2	E-009012	Brass
13	Screw	4	E-008045	Metal
14	Connector Nuts	2	E-009016	Brass
15	Hose	2	E-105007N	Hose
16	Spout (Assembled)	1	EA-666607CP	Chrome
16a	Aerator	1	E-500013NCP	Chrome
16b	Spout	1	E-118013NCP*	Chrome
16c	Gasket	1	E-013048	Foam
16d	Shank	1	E-014011N*	Brass
16e	O-Ring	1	E-004026N	Rubber
16f	Rubber Spout Washer	1	E-058094	Rubber
16g	Metal Spout Washer	1	E-013006NI	Metal
16h	Spout Nut	1	E-009015	Brass
16i	"Y" Connector	1	E-015004N	Brass
17	Drain Kit (see "Drains" for parts)	1	EA-505039CPL	Chrome

* Grayed parts are not available individually. "Assembled" item required.

by Associated Marketing Concepts
 21624 Marilla Street, Chatsworth, CA 91311-4123
 (800) 270-4262 * (818) 678-1651 * FAX (818) 678-1655
www.ambassador-amc.com