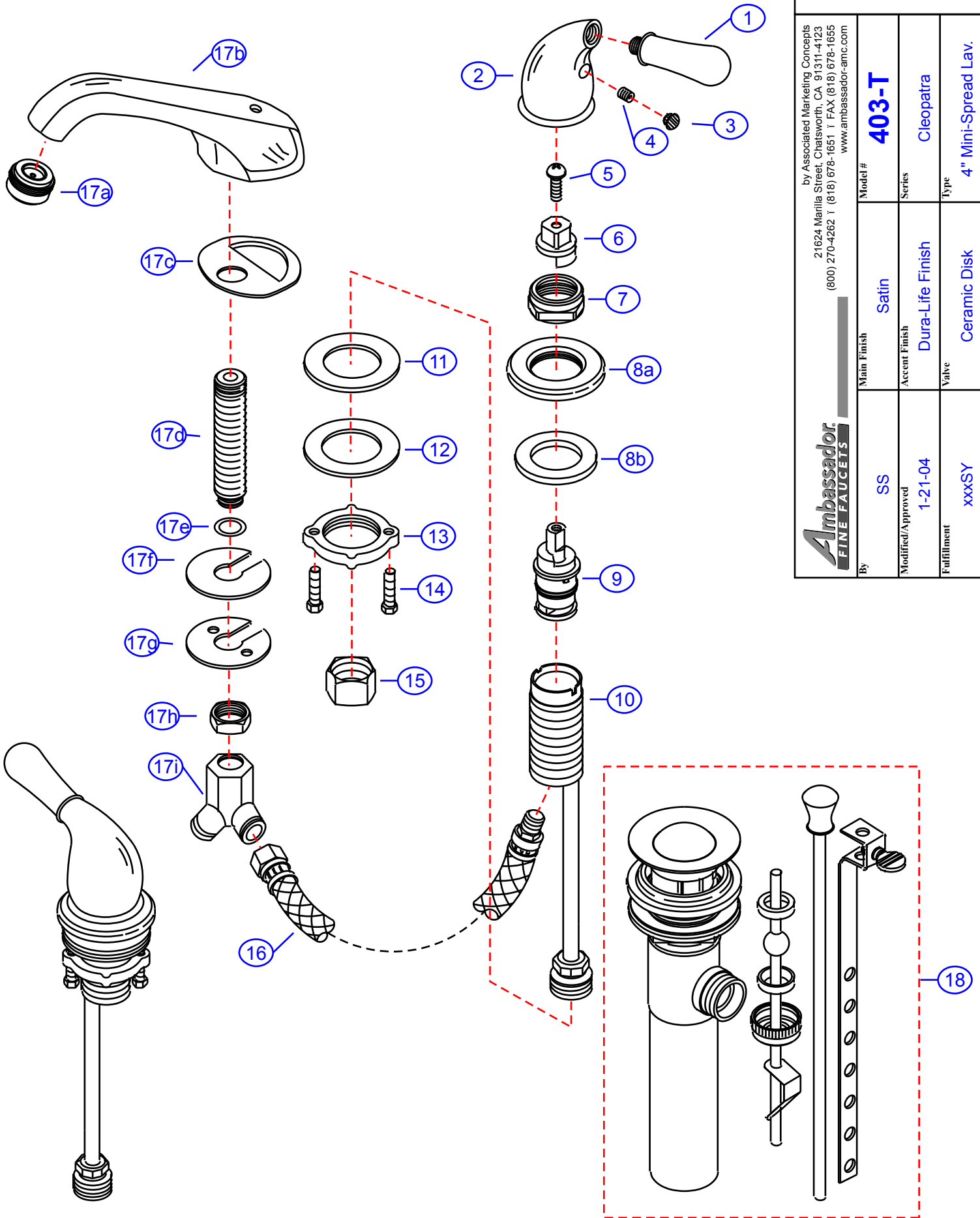


403-T



by Associated Marketing Concepts
 21624 Marilla Street, Chatsworth, CA 91311-4123
 (800) 270-4262 | (818) 678-1651 | FAX (818) 678-1655
 www.ambassador-amc.com

Ambassador
 FINE FAUCETS

| | | | | | |
|-------------------|---------|---------------|------------------|---------|---------------------|
| By | SS | Main Finish | Satin | Model # | 403-T |
| Modified/Approved | 1-21-04 | Accent Finish | Dura-Life Finish | Series | Cleopatra |
| Fulfillment | xxxSY | Valve | Ceramic Disk | Type | 4" Mini-Spread Lav. |

403-T



Cleopatra 4" Mini-Spread Lav- CD/SY

| # | Description | Quantity | Part # | Finish |
|-----|------------------------------------|----------|--------------|------------------------|
| 1 | Handle Tip | 2 | E-108041YP | Dura-Life Finish |
| 2 | Handle Canopy | 2 | E-018052ST | Satin |
| 3 | Red Plug | 1 | E-028046H | Rubber |
| | Blue Plug | 1 | E-028046C | Rubber |
| 4 | Set Screw | 2 | E-008003 | Metal |
| 5 | Screw | 2 | E-008044CP | Chrome |
| 6 | Adapter (Hot) | 1 | E-110114H | Plastic |
| | Adapter (Cold) | 1 | E-110114C | Plastic |
| 7 | Retainer Nut | 2 | E-016002CP | Chrome |
| 8 | Escutcheon (Assembled) | 2 | EA-663201YP | Dura-Life Finish |
| 8a | Escutcheon | 2 | E-204000YP* | Dura-Life Finish |
| 8b | Washer | 2 | E-010020 | Rubber |
| 9 | Cartridge (Hot) | 1 | E-507003NH | Ceramic Disc |
| | Cartridge (Cold) | 1 | E-507003NC | Ceramic Disc |
| 10 | Valve Body | 2 | E-002027N | Brass |
| 11 | Rubber Washer | 2 | E-010017 | Rubber |
| 12 | Metal Washer | 2 | E-013018NI | Metal |
| 13 | Lock Nut | 2 | E-009012 | Brass |
| 14 | Screw | 4 | E-008045 | Metal |
| 15 | Connector Nuts | 2 | E-009016 | Brass |
| 16 | Hose | 2 | E-105007N | Hose |
| 17 | Spout (Assembled) | 1 | EA-666607SY | Satin/Dura-Life Finish |
| 17a | Aerator | 1 | E-500013NYP | Dura-Life Finish |
| 17b | Spout | 1 | E-118013NST* | Satin |
| 17c | Gasket | 1 | E-013048 | Foam |
| 17d | Shank | 1 | E-014011N* | Brass |
| 17e | O-Ring | 1 | E-004026N | Rubber |
| 17f | Rubber Spout Washer | 1 | E-058094 | Rubber |
| 17g | Metal Spout Washer | 1 | E-013006NI | Metal |
| 17h | Spout Nut | 1 | E-009015 | Brass |
| 17i | "Y" Connector | 1 | E-015004N | Brass |
| 18 | Drain Kit (see "Drains" for parts) | 1 | EA-505039SYL | Satin/Dura-Life Finish |

* Grayed parts are not available individually. "Assembled" item required.

by Associated Marketing Concepts
 21624 Marilla Street, Chatsworth, CA 91311-4123
 (800) 270-4262 * (818) 678-1651 * FAX (818) 678-1655
 www.ambassador-amc.com