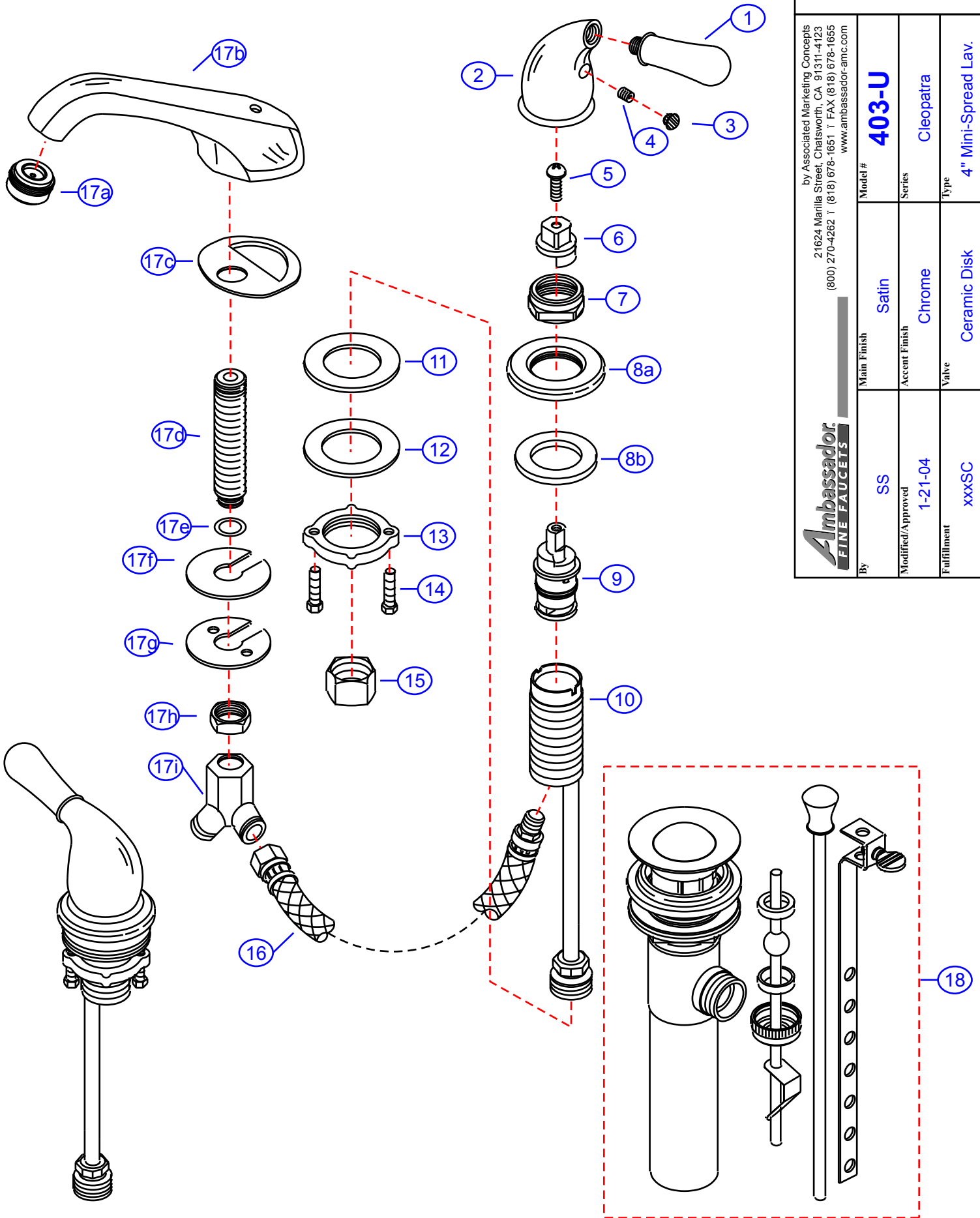


403-U



by Associated Marketing Concepts
 21624 Marilla Street, Chatsworth, CA 91311-4123
 (800) 270-4262 | (818) 678-1651 | FAX (818) 678-1655
 www.ambassador-amc.com

Ambassador
 FINE FAUCETS

By	SS	Main Finish	Satin	Model #	403-U
Modified/Approved	1-21-04	Accent Finish	Chrome	Series	Cleopatra
Fulfillment	xxxSC	Valve	Ceramic Disk	Type	4" Mini-Spread Lav.

403-U



Cleopatra 4" Mini-Spread Lav- CD/SC

#	Description	Quantity	Part #	Finish
1	Handle Tip	2	E-108041CP	Chrome
2	Handle Canopy	2	E-018052ST	Satin
3	Red Plug	1	E-028046H	Rubber
	Blue Plug	1	E-028046C	Rubber
4	Set Screw	2	E-008003	Metal
5	Screw	2	E-008044CP	Chrome
6	Adapter (Hot)	1	E-110114H	Plastic
	Adapter (Cold)	1	E-110114C	Plastic
7	Retainer Nut	2	E-016002CP	Chrome
8	Escutcheon (Assembled)	2	EA-663201CP	Chrome
8a	Escutcheon	2	E-204000CP*	Chrome
8b	Washer	2	E-010020	Rubber
9	Cartridge (Hot)	1	E-507003NH	Ceramic Disc
	Cartridge (Cold)	1	E-507003NC	Ceramic Disc
10	Valve Body	2	E-002027N	Brass
11	Rubber Washer	2	E-010017	Rubber
12	Metal Washer	2	E-013018NI	Metal
13	Lock Nut	2	E-009012	Brass
14	Screw	4	E-008045	Metal
15	Connector Nuts	2	E-009016	Brass
16	Hose	2	E-105007N	Hose
17	Spout (Assembled)	1	EA-666607SC	Satin/Chrome
17a	Aerator	1	E-500013NCP	Chrome
17b	Spout	1	E-118013NST*	Satin
17c	Gasket	1	E-013048	Foam
17d	Shank	1	E-014011N*	Brass
17e	O-Ring	1	E-004026N	Rubber
17f	Rubber Spout Washer	1	E-058094	Rubber
17g	Metal Spout Washer	1	E-013006NI	Metal
17h	Spout Nut	1	E-009015	Brass
17i	"Y" Connector	1	E-015004N	Brass
18	Drain Kit (see "Drains" for parts)	1	EA-505039SCL	Satin/Chrome

* Grayed parts are not available individually. "Assembled" item required.

by Associated Marketing Concepts
 21624 Marilla Street, Chatsworth, CA 91311-4123
 (800) 270-4262 * (818) 678-1651 * FAX (818) 678-1655
 www.ambassador-amc.com