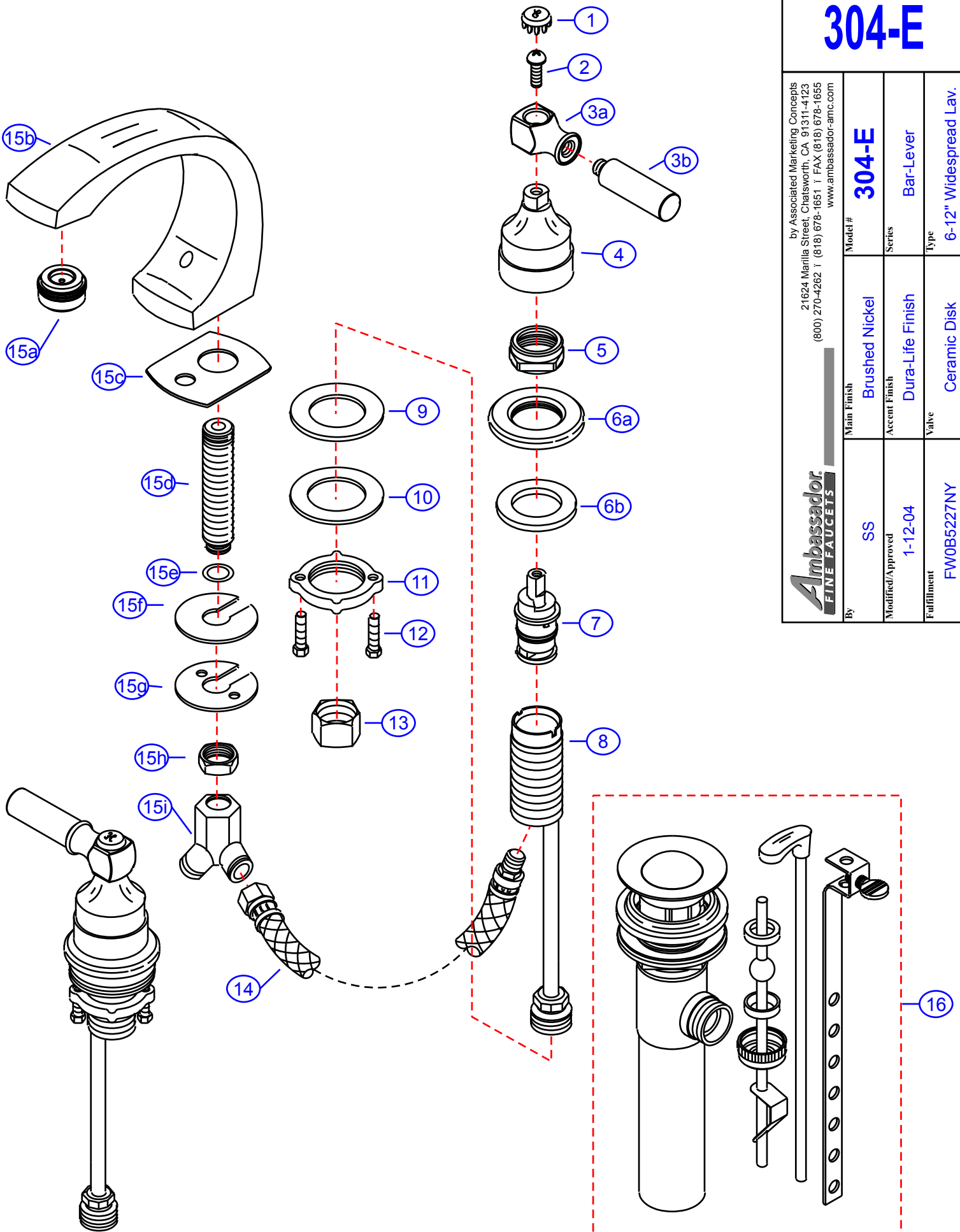


# 304-E

by Associated Marketing Concepts  
 21624 Marilla Street, Chatsworth, CA 91311-4123  
 (800) 270-4262 | (818) 678-1651 | FAX (818) 678-1655  
 www.ambassador-amc.com



By	SS	Main Finish	Brushed Nickel	Model #	304-E
Modified/Approved	1-12-04	Accent Finish	Dura-Life Finish	Series	Bar-Lever
Fulfillment	FW0B5227NY	Valve	Ceramic Disk	Type	6-12" Widespread Lav.



# 304-E



## Bar-Lever 6-12" Widespread Lav- CD/NY

#	Description	Quantity	Part #	Finish
1	Cap "H"	1	E-206041HNP	Brushed Nickel
	Cap "C"	1	E-206041CNP	Brushed Nickel
2	Handle Screw	2	E-008037CP	Metal
3	Handle	2	EA-662048YP	Dura-Life Finish
3a	Handle Head	2	E-107047YP*	Dura-Life Finish
3b	Handle Tip	2	E-552030YP*	Dura-Life Finish
4	Handle Canopy (Hot)	1	E-018027HNP	Brushed Nickel
	Handle Canopy (Cold)	1	E-018027CNP	Brushed Nickel
5	Retainer Nut	2	E-016002CP	Chrome
6	Escutcheon (Assembled)	2	EA-663201YP	Dura-Life Finish
6a	Escutcheon	2	E-204000YP*	Dura-Life Finish
6b	Gasket	2	E-010020	Rubber
7	Cartridge (Hot)	1	E-507003NH	Ceramic Disc
	Cartridge (Cold)	1	E-507003NC	Ceramic Disc
8	Valve Body	2	E-002027N	Brass
9	Rubber Washer	2	E-010017	Rubber
10	Metal Washer	2	E-013018NI	Metal
11	Lock Nut	2	E-009012	Brass
12	Screw	4	E-008045	Metal
13	Connector Nuts	2	E-009016	Brass
14	Hose	2	E-105007N	Hose
15	Spout (Assembled)	1	EA-666506NY	Brushed Nickel/Dura-Life Finish
15a	Aerator	1	E-500013NYP	Dura-Life Finish
15b	Spout	1	E-132079NNP*	Brushed Nickel
15c	Gasket	1	E-060092	Foam
15d	Shank	1	E-014011N*	Brass
15e	O-Ring	1	E-004026N	Rubber
15f	Rubber Spout Washer	1	E-058094	Rubber
15g	Metal Spout Washer	1	E-013006NI	Metal
15h	Spout Nut	1	E-009015	Brass
15i	"Y" Connector	1	E-015004N	Brass
16	Drain Kit (see "Drains" for parts)	1	EA-505006NY	Brushed Nickel/Dura-Life Finish

\* Grayed parts are not available individually. "Assembled" item required.

by Associated Marketing Concepts  
 21624 Marilla Street, Chatsworth, CA 91311-4123  
 (800) 270-4262 \* (818) 678-1651 \* FAX (818) 678-1655  
[www.ambassador-amc.com](http://www.ambassador-amc.com)