

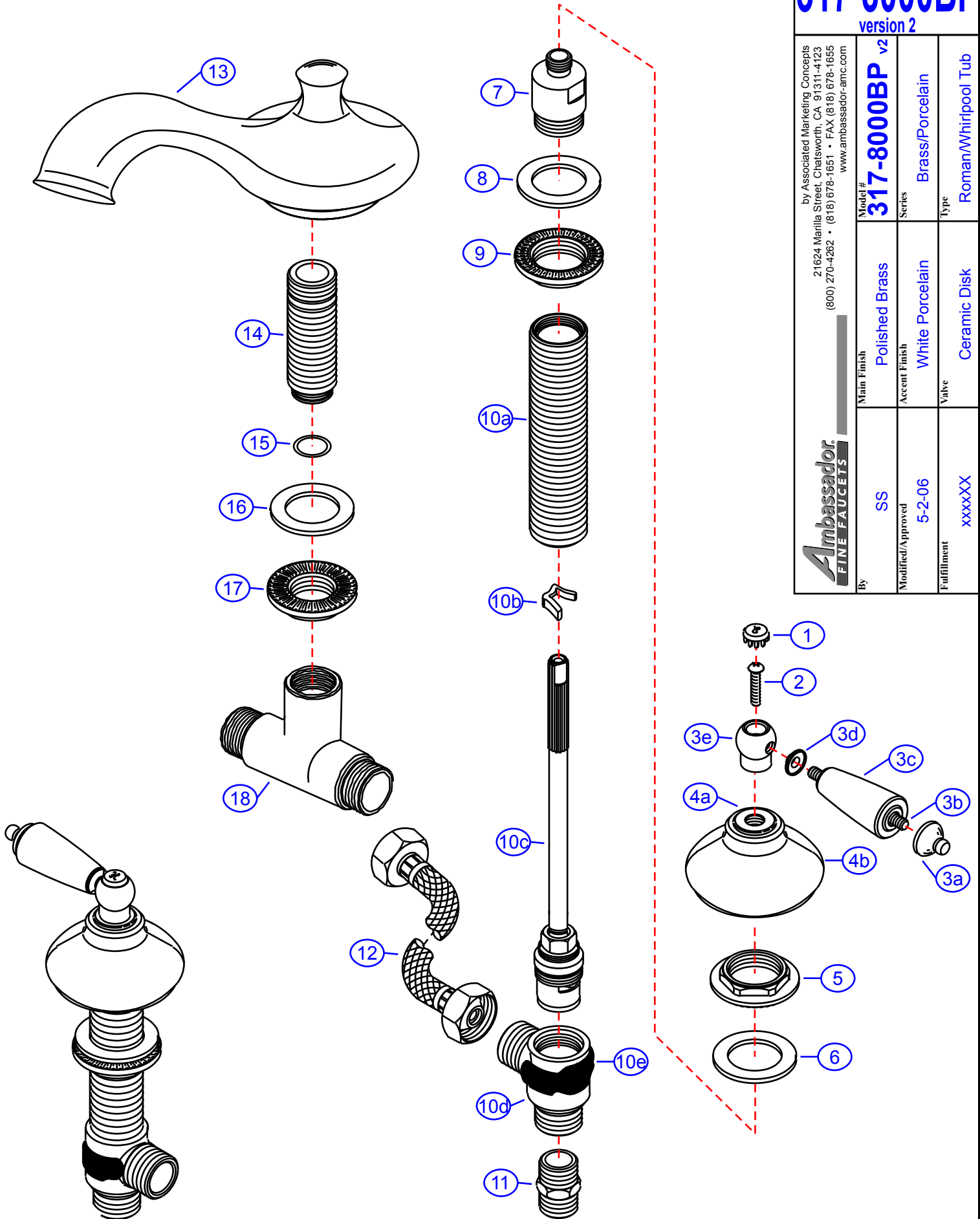
317-8000BP

version 2

by Associated Marketing Concepts
 21624 Manila Street, Chatsworth, CA 91311-4123
 (800) 270-4262 • (818) 678-1651 • FAX (818) 678-1655
 www.ambassador-amc.com

Ambassador
 FINE FAUCETS

| | | | |
|-------------------|----------------------|---------------|---------------------|
| Model # | 317-8000BP v2 | | |
| Main Finish | Polished Brass | Series | Brass/Porcelain |
| Modified/Approved | 5-2-06 | Accent Finish | White Porcelain |
| Fulfillment | xxxxXX | Valve | Ceramic Disk |
| | | Type | Roman/Whirlpool Tub |



317-8000BP v2



Brass/Porcelain Roman/Whirlpool Tub- CD/PW

| # | Description | Quantity | Part # | Finish |
|-----|-------------------------------|----------|-------------|-----------------|
| 1 | Cap "H" | 1 | E-206041HPB | Polished Brass |
| | Cap "C" | 1 | E-206041CPB | Polished Brass |
| 2 | Handle Screw | 2 | E-008038CP | Chrome |
| 3 | Brass/Porc. Widespread Handle | 2 | G-xxxx | Brass/Porcelain |
| 3a | Handle Tip | 2 | E-109003PB | Polished Brass |
| 3b | Handle Rod | 2 | E-017045 | Metal |
| 3c | Handle (Brass/Porcelain) | 2 | G-xxxx | Porcelain |
| 3d | Handle Spacer | 2 | G-xxxx | Polished Brass |
| 3e | Handle Head | 2 | E-226002PB | Polished Brass |
| 4 | Canopy (Assembled) | 2 | G-xxxx | Brass/Porcelain |
| 4a | Canopy Threads | 2 | E-205007PB* | Polished Brass |
| 4b | Canopy | 2 | G-xxxx | Porcelain |
| 5 | Lock Nut | 2 | G-xxxx | Brass |
| 6 | Rubber Washer | 2 | E-010022 | Rubber |
| 7 | Adapter | 2 | E-016018 | Brass |
| 8 | Rubber Washer | 2 | E-010022 | Rubber |
| 9 | Lock Nut | 2 | G-xxxx | Brass |
| 10 | Valve Body (Assembled) Hot | 1 | G-Axxxx | Brass |
| | Valve Body (Assembled) Cold | 1 | G-Axxxx | Brass |
| 10a | Body | 2 | E-014040* | Brass |
| 10b | "C" Clip | 2 | E-012019* | Metal |
| 10c | Cartridge (Hot) | 1 | E-507060H* | Ceramic Disc |
| | Cartridge (Cold) | 1 | E-507060C* | Ceramic Disc |
| 10d | Valve Bottom | 2 | E-061003* | Brass |
| 10e | Clip (Red) | 1 | E-012024H* | Plastic |
| | Clip (Blue) | 1 | E-012024C* | Plastic |
| 11 | Reducer | 2 | E-035002 | Brass |
| 12 | Hose | 2 | E-105011 | Hose |
| 13 | Spout | 1 | E-100041PB | Polished Brass |
| 14 | Spout Shaft | 1 | E-014006 | Brass |
| 15 | O-Ring | 1 | E-004010N | Rubber |
| 16 | Rubber Washer | 1 | E-010023 | Rubber |
| 17 | Lock Nut | 1 | E-054027 | Brass |
| 18 | "T" Connector | 1 | E-015007 | Brass |

* Grayed parts are not available individually. "Assembled" item required.

by Associated Marketing Concepts
 21624 Marilla Street, Chatsworth, CA 91311-4123
 (800) 270-4262 * (818) 678-1651 * FAX (818) 678-1655
www.ambassador-amc.com