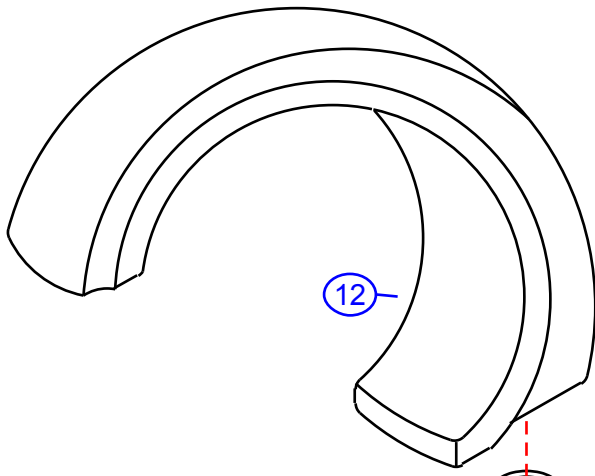


317-8000M

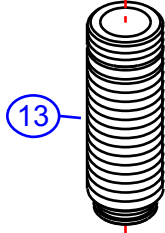
by Associated Marketing Concepts
 21624 Manilla Street, Chatsworth, CA 91311-4123
 (800) 270-4262 • (818) 678-1651 • FAX (818) 678-1655
 www.ambassador-amc.com



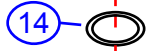
By	SS	Main Finish	Chrome	Model #	317-8000M
Modified/Approved	5-2-06	Accent Finish	18k Gold	Series	Multi-Ring
Fulfillment	xxxxCG	Valve	Ceramic Disk	Type	Roman/Whirlpool Tub



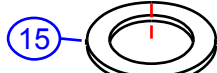
12



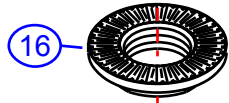
13



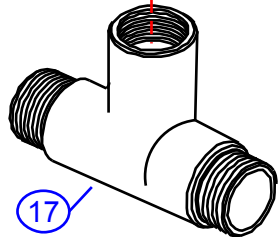
14



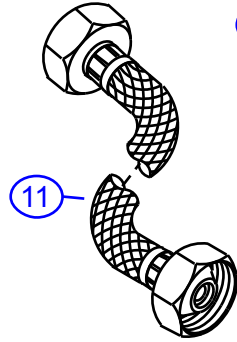
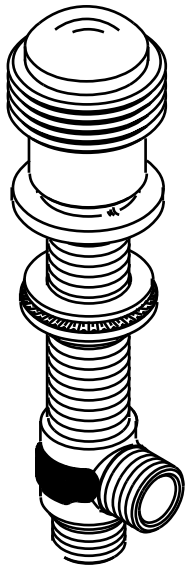
15



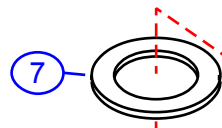
16



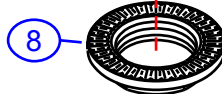
17



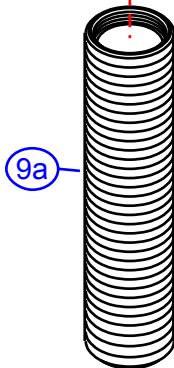
11



7



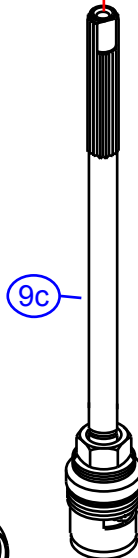
8



9a



9b



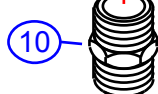
9c



9e



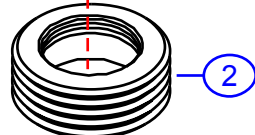
9d



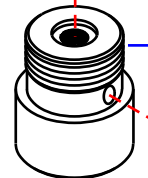
10



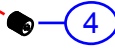
1



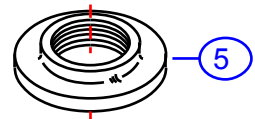
2



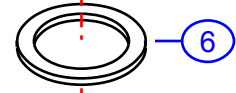
3



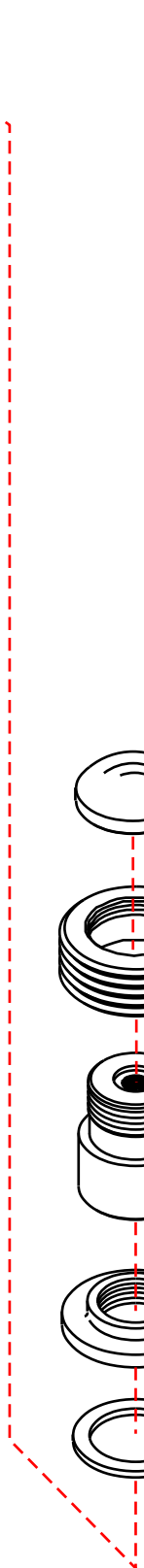
4



5



6



317-8000M



Multi-Ring Roman/Whirlpool Tub- CD/CG

#	Description	Quantity	Part #	Finish
1	Cap	2	E-206082CP	Chrome
2	Trim Ring	2	E-218023GP	Gold
3	Canopy	2	G-xxxxCP	Chrome
4	Set Screw	2	G-xxxx	Metal
5	Escutcheon	2	G-xxxxGP	Gold
6	Rubber Washer	2	G-xxxx	Rubber
7	Rubber Washer	2	G-xxxx	Rubber
8	Lock Nut	2	G-xxxx	Brass
9	Valve Body (Assembled) Hot	2	G-Axxxx	Brass
9a	Body	2	E-014040*	Brass
9b	"C" Clip	2	E-012019*	Metal
9c	Cartridge (Hot)	2	E-507060H*	Ceramic Disc
9d	Valve Bottom	2	E-061003*	Brass
9e	Clip (Red)	2	E-012024H*	Plastic
10	Reducer	2	E-035002	Brass
11	Hose	2	E-105011	Hose
12	Spout	1	E-100039CP	Chrome
13	Spout Shaft	1	E-014006	Brass
14	O-Ring	1	E-004010N	Rubber
15	Rubber Washer	1	E-010023	Rubber
16	Lock Nut	1	E-054027	Brass
17	"T" Connector	1	E-015007	Brass

* Grayed parts are not available individually. "Assembled" item required.

by Associated Marketing Concepts
21624 Marilla Street, Chatsworth, CA 91311-4123
(800) 270-4262 * (818) 678-1651 * FAX (818) 678-1655
www.ambassador-amc.com