

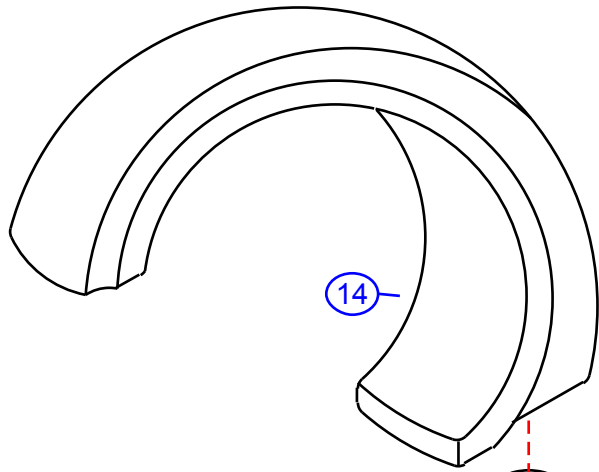
# 408-Q

version 1

by Associated Marketing Concepts  
 21624 Manilla Street, Chatsworth, CA 91311-4123  
 (800) 270-4262 | (818) 678-1651 | FAX (818) 678-1655  
 www.ambassador-amc.com

**Ambassador**  
 FINE FAUCETS

By	SS	Chrome	Model #	408-Q v1
Modified/Approved	7-8-04	None	Series	Cleopatra
Fulfillment	xxxxxCP	Ceramic Disk	Valve	Roman/Whirlpool Tub



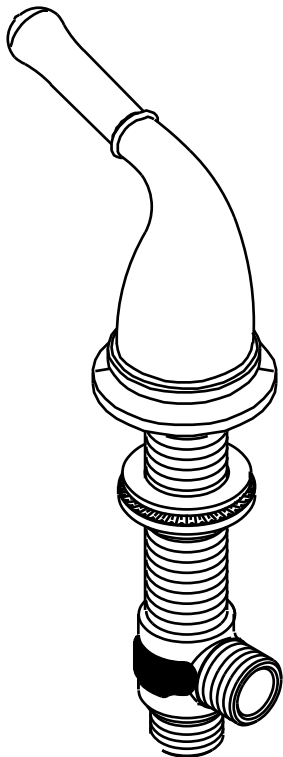
14

15

16

17

18



19

13

11g

12

9

10

11a

11b

11c

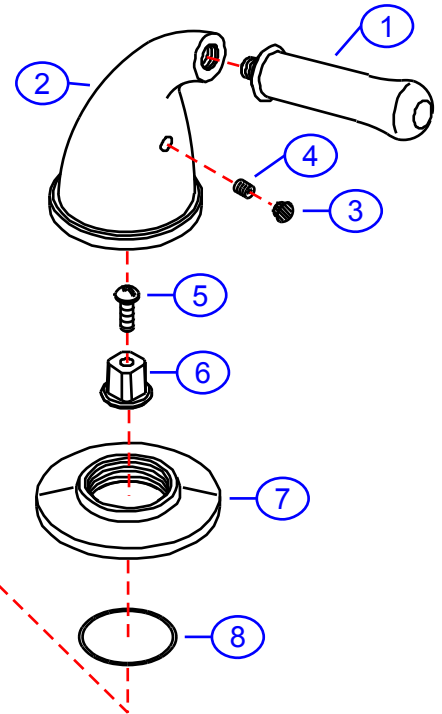
11d

11e

11f

11g

12



2

1

4

3

5

6

7

8

# 408-Q v1



## Cleopatra Roman/Whirlpool Tub- CD/CP

#	Description	Quantity	Part #	Finish
1	Handle Tip	2	E-108072CP	Chrome
2	Handle Canopy	2	E-018079CP	Chrome
3	Red Plug	1	E-028046H	Rubber
	Blue Plug	1	E-028046C	Rubber
4	Set Screw	2	E-008003	Metal
5	Handle Screw	2	E-008044CP	Chrome
6	Adapter	2	E-110020	Metal
7	Escutcheon	2	E-204016CP	Chrome
8	O-Ring	2	E-048054	Rubber
9	Rubber Washer	2	E-010022	Rubber
10	Lock Nut	2	E-054026	Brass
11	Valve Body (Assembled) Hot	1	EA-550112H	Brass
	Valve Body (Assembled) Cold	1	EA-550112C	Brass
11a	Cartridge (Hot)	1	E-507055	Ceramic Disc
	Cartridge (Cold)	1	E-507056	Ceramic Disc
11b	Sleeve	2	E-035105*	Brass
11c	O-Ring	2	E-004074*	Rubber
11d	Body	2	E-014137*	Brass
11e	O-Ring	2	E-004081*	Rubber
11f	Clip (Red)	1	E-012024H*	Plastic
	Clip (Blue)	1	E-012024C*	Plastic
11g	Valve Bottom	2	E-055088*	Brass
12	Reducer	2	E-035002	Brass
13	Hose	2	E-105011	Hose
14	Spout	1	E-100039CP	Chrome
15	Spout Shaft	1	E-014006	Brass
16	O-Ring	1	E-004010N	Rubber
17	Rubber Washer	1	E-010023	Rubber
18	Lock Nut	1	E-054027	Brass
19	"T" Connector	1	E-015007	Brass

\* Grayed parts are not available individually. "Assembled" item required.

by Associated Marketing Concepts  
 21624 Marilla Street, Chatsworth, CA 91311-4123  
 (800) 270-4262 \* (818) 678-1651 \* FAX (818) 678-1655  
[www.ambassador-amc.com](http://www.ambassador-amc.com)