

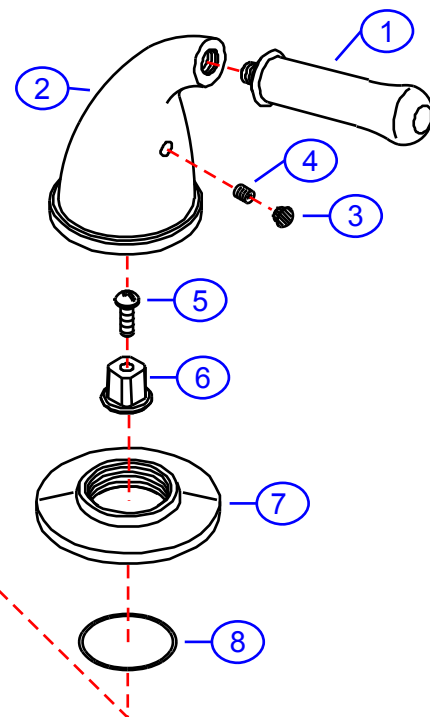
408-U

version 2

by Associated Marketing Concepts
 21624 Manilla Street, Chatsworth, CA 91311-4123
 (800) 270-4262 | (818) 678-1651 | FAX (818) 678-1655
 www.ambassador-amc.com

Ambassador
 FINE FAUCETS

| | | | | | |
|-------------------|------------|---------------|--------------|---------|---------------------|
| By | SS | Main Finish | Satin | Model # | 408-U v2 |
| Modified/Approved | 7-13-04 | Accent Finish | Chrome | Series | Cleopatra |
| Fulfillment | FR2B5004SC | Valve | Ceramic Disk | Type | Roman/Whirlpool Tub |



408-U v2



Cleopatra Roman/Whirlpool Tub- CD/SC

| # | Description | Quantity | Part # | Finish |
|-------|------------------------------|----------|------------|--------------|
| 1 | Handle Tip | 2 | E-108072CP | Chrome |
| 2 | Handle Canopy | 2 | E-018079ST | Satin |
| 3 | Red Plug | 1 | E-028046H | Rubber |
| | Blue Plug | 1 | E-028046C | Rubber |
| 4 | Set Screw | 2 | E-008003 | Metal |
| 5 | Handle Screw | 2 | E-008044CP | Chrome |
| 6 | Adapter | 2 | E-110027 | Metal |
| 7 | Escutcheon | 2 | E-204016CP | Chrome |
| 8 | O-Ring | 2 | E-048054 | Rubber |
| 9 | Rubber Washer | 2 | E-010022 | Rubber |
| 10 | Lock Nut | 2 | E-054026 | Brass |
| 11 | Valve Body (Assembled) Hot | 1 | EA-550112H | Brass |
| | Valve Body (Assembled) Cold | 1 | EA-550112C | Brass |
| 11a | Cartridge (Hot) | 1 | E-507055 | Ceramic Disc |
| | Cartridge (Cold) | 1 | E-507056 | Ceramic Disc |
| 11b | Sleeve | 2 | E-035105* | Brass |
| 11c | O-Ring | 2 | E-004074* | Rubber |
| 11d | Body | 2 | E-014137* | Brass |
| 11e | O-Ring | 2 | E-004081* | Rubber |
| 11f | Clip (Red) | 1 | E-012024H* | Plastic |
| | Clip (Blue) | 1 | E-012024C* | Plastic |
| 11g | Valve Bottom | 2 | E-055088* | Brass |
| 12 | Reducer | 2 | E-035002 | Brass |
| 13 | Hose | 2 | E-105011 | Hose |
| 14 | Spout | 1 | E-132027ST | Satin |
| 15 | Set Screw | 1 | E-065027 | Metal |
| 16 | Spout Shaft (Assembled) | 1 | G-X1112 | Brass |
| 16a | O-Ring | 1 | E-063031 | Rubber |
| 16b | Spout Shaft Base (Assembled) | 1 | EA-014068* | Brass |
| 16b-1 | Base | 1 | E-070002* | Brass |
| 16b-2 | Shaft | 1 | E-014067* | Brass |
| 16c | O-Ring | 1 | E-004057 | Rubber |
| 16d | O-Ring | 1 | E-004010N | Rubber |
| 17 | Rubber Washer | 1 | E-010023 | Rubber |
| 18 | Lock Nut | 1 | E-054027 | Brass |
| 19 | "Y" Connector | 1 | E-015007 | Brass |

* Grayed parts are not available individually. "Assembled" item required.

by Associated Marketing Concepts
 21624 Marilla Street, Chatsworth, CA 91311-4123
 (800) 270-4262 * (818) 678-1651 * FAX (818) 678-1655
www.ambassador-amc.com