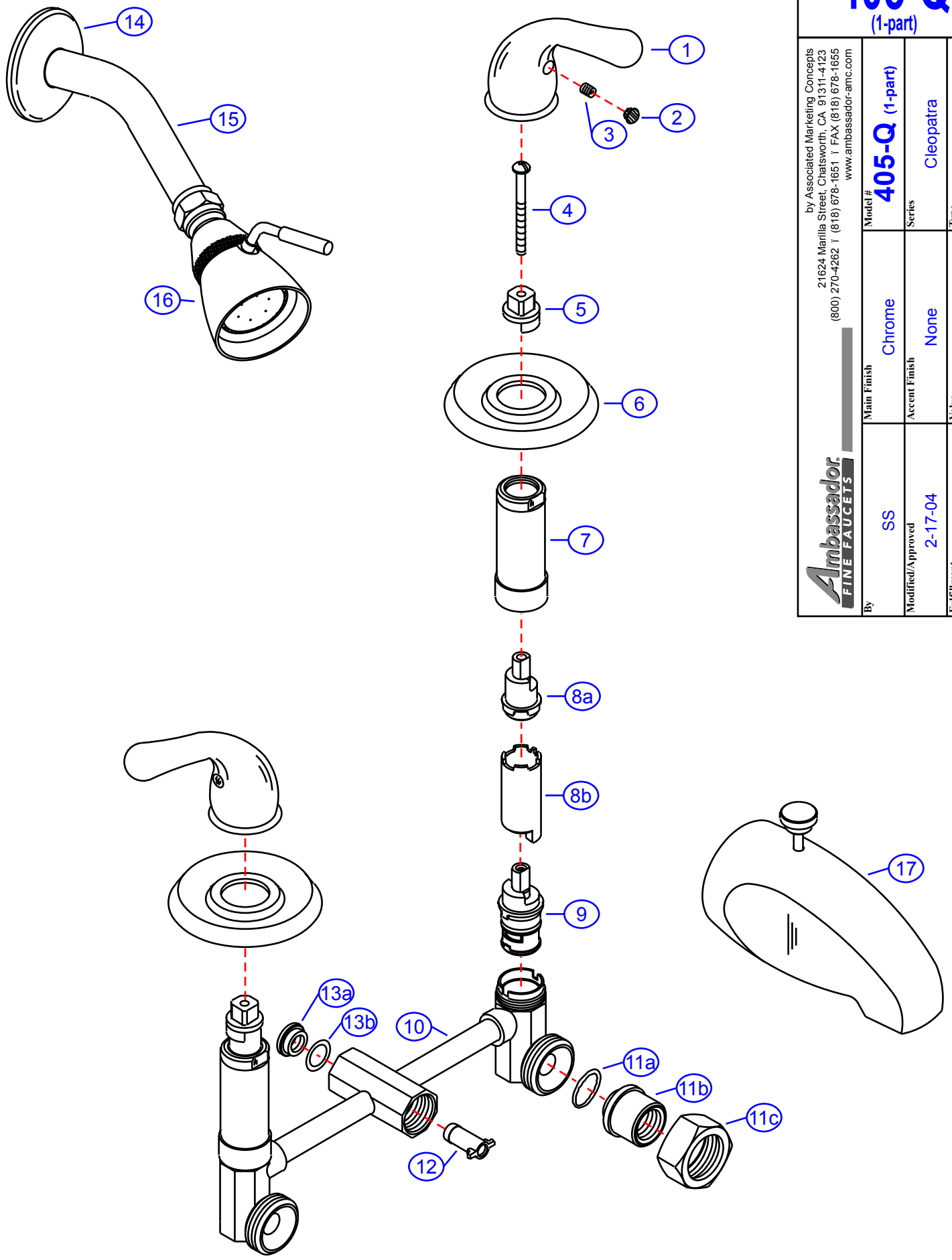


# 405-Q

(1-part)

by Associated Marketing Concepts  
 21624 Marilla Street, Chatsworth, CA 91311-4123  
 (800) 270-4262 | (818) 678-1651 | FAX (818) 678-1655  
 www.ambassador-amc.com

Model #	<b>405-Q (1-part)</b>		
Series	Cleopatra		
Type	2 Handle Shower/Tub		
Main Finish	Chrome	Accent Finish	None
Valve	Ceramic Disk		
By	SS	Modified/Approved	F20A5701CP
		2-17-04	
Fulfillment			



# 405-Q (1 PART)



## Cleopatra 2 Handle Shower/Tub- CD/CP

#	Description	Quantity	Part #	Finish
1	Handle	2	E-029032CP	Chrome
2	Red Plug	1	E-028046H	Rubber
	Blue Plug	1	E-028046C	Rubber
3	Set Screw	2	E-008003	Metal
4	Handle Screw	2	E-008085	Metal
5	Adapter (Hot)	1	E-110114H	Plastic
	Adapter (Cold)	1	E-110114C	Plastic
6	Escutcheon	2	E-111001CP	Chrome
7	Retainer Nut	2	E-216000CP	Chrome
8	Stem Extention (Hot)	1	EA-517000H	Plastic
	Stem Extention (Cold)	1	EA-517000C	Plastic
8a	Stem Extention Fitting (Hot)	1	E-110012H*	Plastic
	Stem Extention Fitting (Cold)	1	E-110012C*	Plastic
8b	Stem Extention Body (Hot)	1	E-110007H*	Plastic
	Stem Extention Body (Cold)	1	E-110007C*	Plastic
9	Cartridge (Hot)	1	E-507003NH	Ceramic Disc
	Cartridge (Cold)	1	E-507003NC	Ceramic Disc
10	Valve	1	E-002070	Brass
11	Union Nut (Assembled)	2	EA-504100	Brass
11a	O-Ring	2	E-004064	Brass
11b	Union Sleeve	2	E-009028*	Brass
11c	Union Nut	2	E-009001*	Brass
12	Diverter Spindle	1	E-208022	Plastic
13	Diverter Cap (Assembled)	1	G-A55400	Plastic/Rubber
13a	Diverter Cap	1	E-209000*	Plastic
13b	O-Ring	1	E-004070*	Rubber
14	Shower Arm Escutcheon	1	E-019001CP	Chrome
15	Shower Arm	1	E-020002CP	Chrome
16	Shower Head	1	E-S11B0200CP	Chrome
17	Tub Spout	1	E-100032CP	Chrome

\* Grayed parts are not available individually. "Assembled" item required.

by Associated Marketing Concepts  
 21624 Marilla Street, Chatsworth, CA 91311-4123  
 (800) 270-4262 \* (818) 678-1651 \* FAX (818) 678-1655  
 www.ambassador-amc.com