

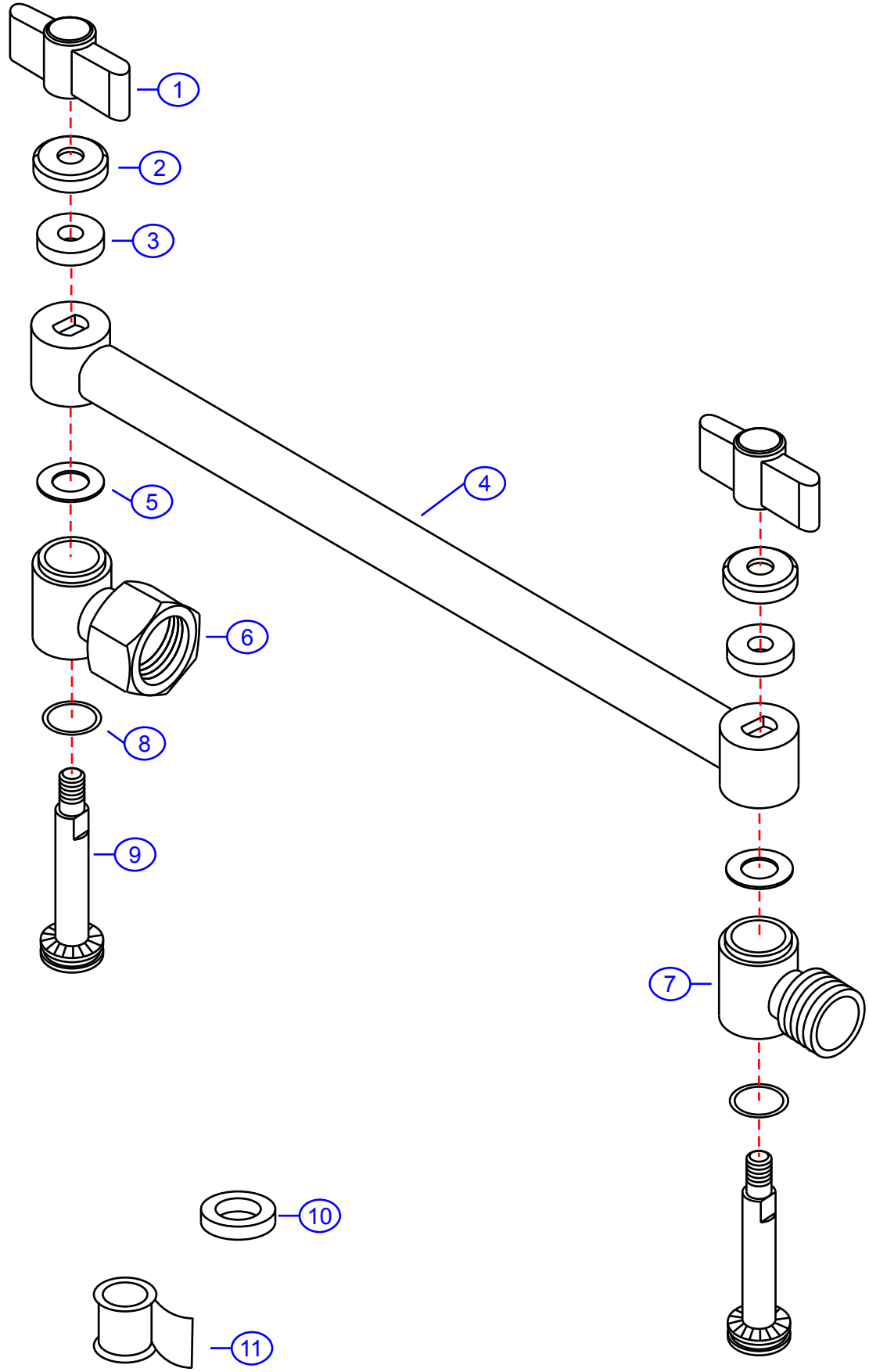
8010-A

version 1

by Associated Marketing Concepts
 21624 Marilla Street, Chatsworth, CA 91311-4123
 (800) 270-4262 | (818) 678-1651 | FAX (818) 678-1655
 www.ambassador-amc.com



| | | | | | |
|-------------------|--------|---------------|----------|---------|-----------------------|
| By | SS | Main Finish | 18k Gold | Model # | 8010-A v1 |
| Modified/Approved | 4-1-04 | Accent Finish | None | Series | Adjustable Shower Arm |
| Fulfillment | xxxxGP | Valve | NA | Type | Shower Head |



8010-A v1



9" Adjustable Shower Arm- GP

| # | Description | Quantity | Part # | Finish |
|----|------------------|----------|------------|---------|
| 1 | Wing Nut | 2 | E-029087GP | Gold |
| 2 | Cap | 2 | E-045008GP | Gold |
| 3 | Washer | 2 | E-058022 | Rubber |
| 4 | Arm | 1 | G-51705GP* | Gold |
| 5 | Packing Ring | 2 | E-203000 | Plastic |
| 6 | Female Connector | 1 | E-057090GP | Gold |
| 7 | Male Connector | 1 | E-057041GP | Gold |
| 8 | O-Ring | 2 | E-048091 | Rubber |
| 9 | Bolt | 2 | E-125023GP | Gold |
| 10 | Washer | 1 | E-058007 | Rubber |
| 11 | Teflon Tape | 1 | E-203000 | Tape |

* Grayed parts are not available individually. "Assembled" item required.