

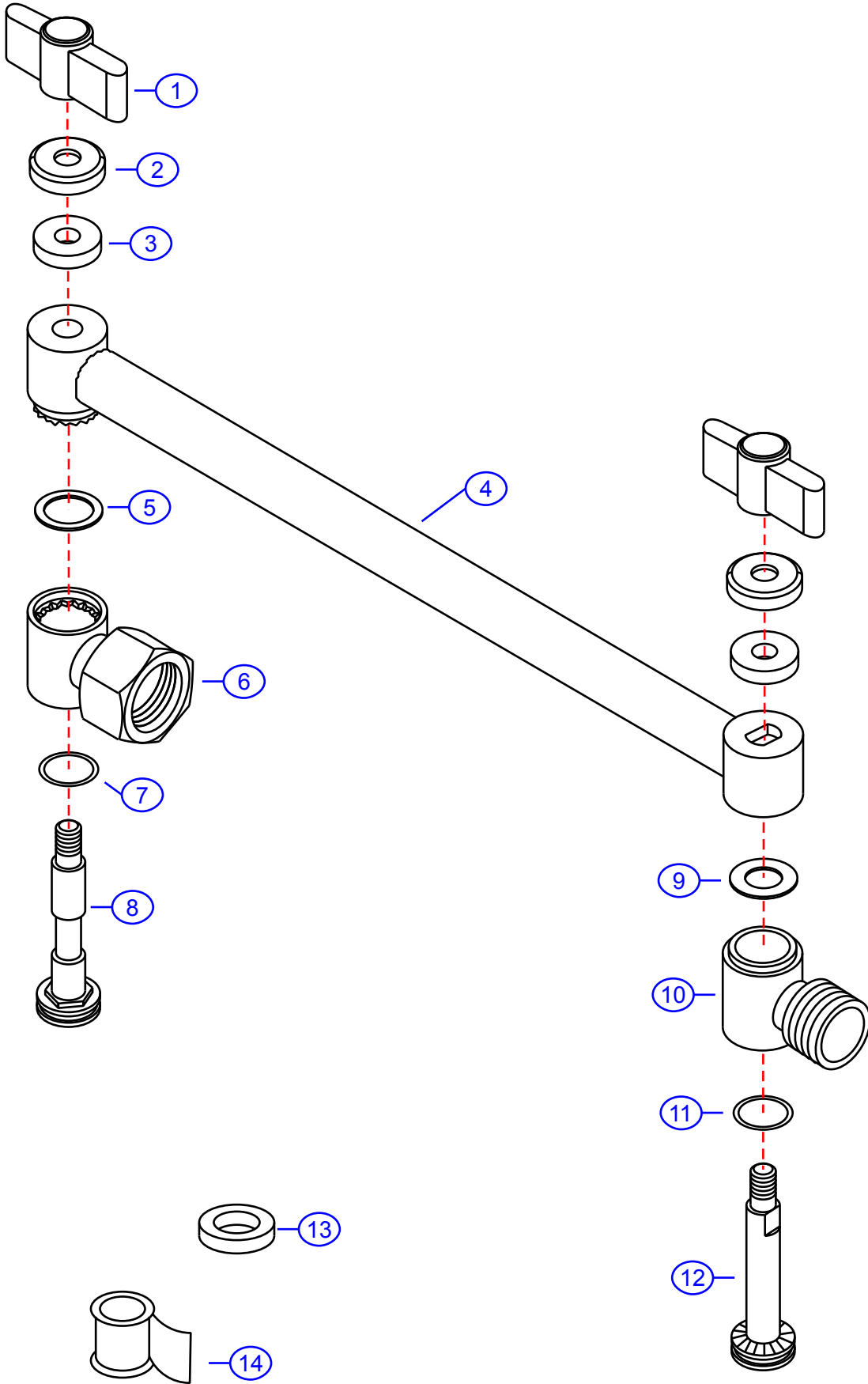
# 8010-B

version 2

by Associated Marketing Concepts  
 21624 Marilla Street, Chatsworth, CA 91311-4123  
 (800) 270-4262 | (818) 678-1651 | FAX (818) 678-1655  
 www.ambassador-amc.com



By	SS	Main Finish	Chrome
Modified/Approved	9-29-04	Accent Finish	18k Gold
Fulfillment	A558216CG	Valve	NA
Model #	<b>8010-B v2</b>		
Series	Adjustable Shower Arm		
Type	Shower Head		



# 8010-B v2



## 9" Adjustable Shower Arm- CG

#	Description	Quantity	Part #	Finish
1	Wing Nut	2	E-029087GP	Gold
2	Cap	2	E-045008CP	Chrome
3	Washer	2	E-058022	Rubber
4	Arm	1	E-517007CP*	Chrome
5	O-Ring	1	E-048091	Rubber
6	Female Connector	1	E-057090CP	Chrome
7	O-Ring	2	E-048091	Rubber
8	Bolt	1	E-125032CP	Chrome
9	Packing Ring	1	E-200030	Plastic
10	Male Connector	1	E-057041CP	Chrome
11	O-Ring	1	E-048091	Rubber
12	Bolt	1	E-125023CP	Chrome
13	Washer	1	E-058007	Rubber
14	Teflon Tape	1	E-203000	Tape

\* Grayed parts are not available individually. "Assembled" item required.