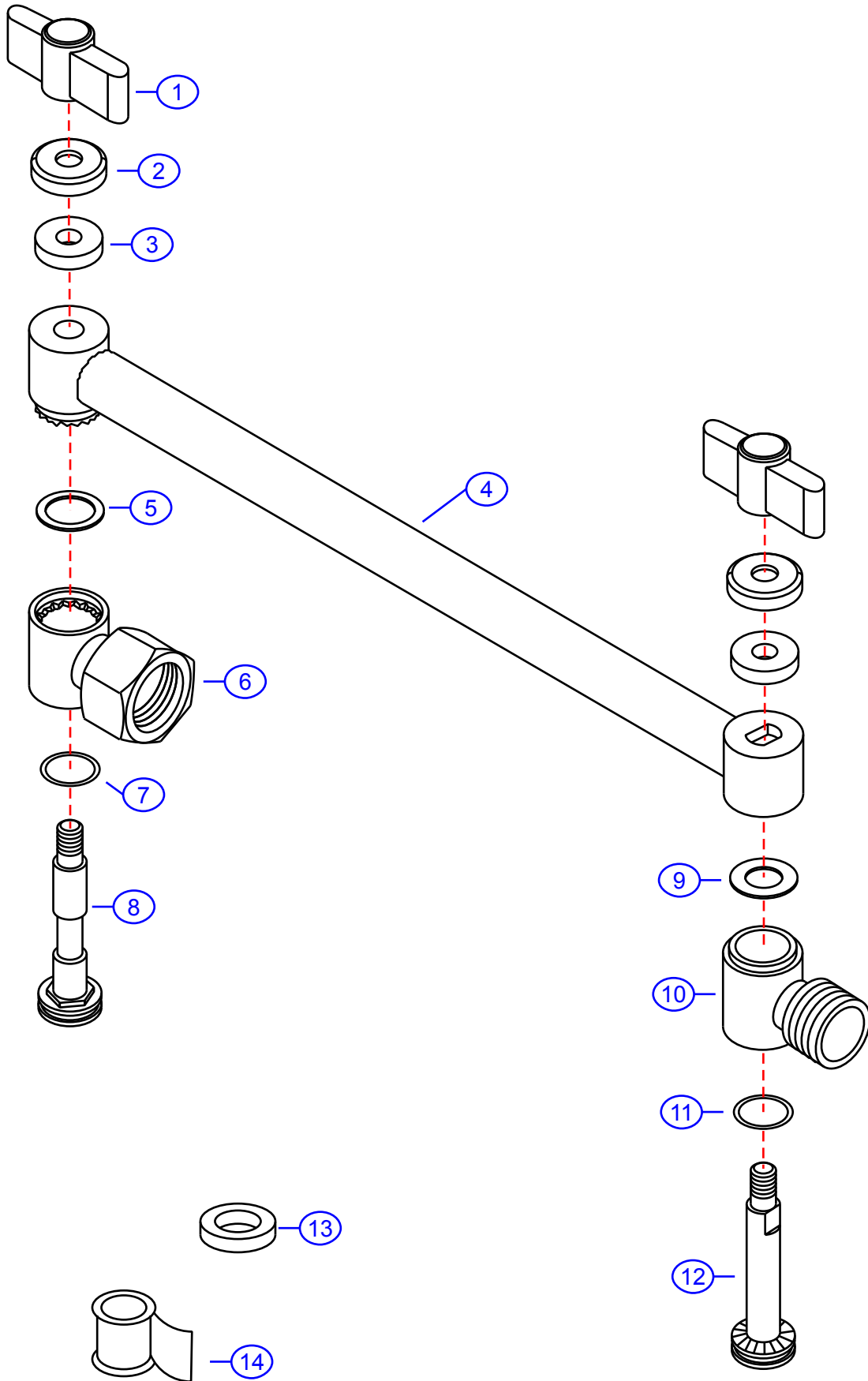


8010-NC

by Associated Marketing Concepts
 21624 Marilla Street, Chatsworth, CA 91311-4123
 (800) 270-4262 | (818) 678-1651 | FAX (818) 678-1655
 www.ambassador-amc.com



By	SS	Main Finish	Brushed Nickel	Model #	8010-NC
Modified/Approved	4-20-17	Accent Finish	Chrome	Series	Adjustable Shower Arm
Fulfillment	A558216NC	Valve	NA	Type	Shower Head



8010-NC



9" Adjustable Shower Arm- NC

#	Description	Quantity	Part #	Finish
1	Wing Nut	2	E-029087CP	Chrome
2	Cap	2	E-045008NP	Brushed Nickel
3	Washer	2	E-058022	Rubber
4	Arm	1	E-517007NP*	Brushed Nickel
5	O-Ring	1	E-048091	Rubber
6	Female Connector	1	E-057090NP	Brushed Nickel
7	O-Ring	2	E-048091	Rubber
8	Bolt	1	E-125032NP	Brushed Nickel
9	Packing Ring	1	E-200030	Plastic
10	Male Connector	1	E-057041NP	Brushed Nickel
11	O-Ring	1	E-048091	Rubber
12	Bolt	1	E-125023NP	Brushed Nickel
13	Washer	1	E-058007	Rubber
14	Teflon Tape	1	E-203000	Tape

* Grayed parts are not available individually. "Assembled" item required.