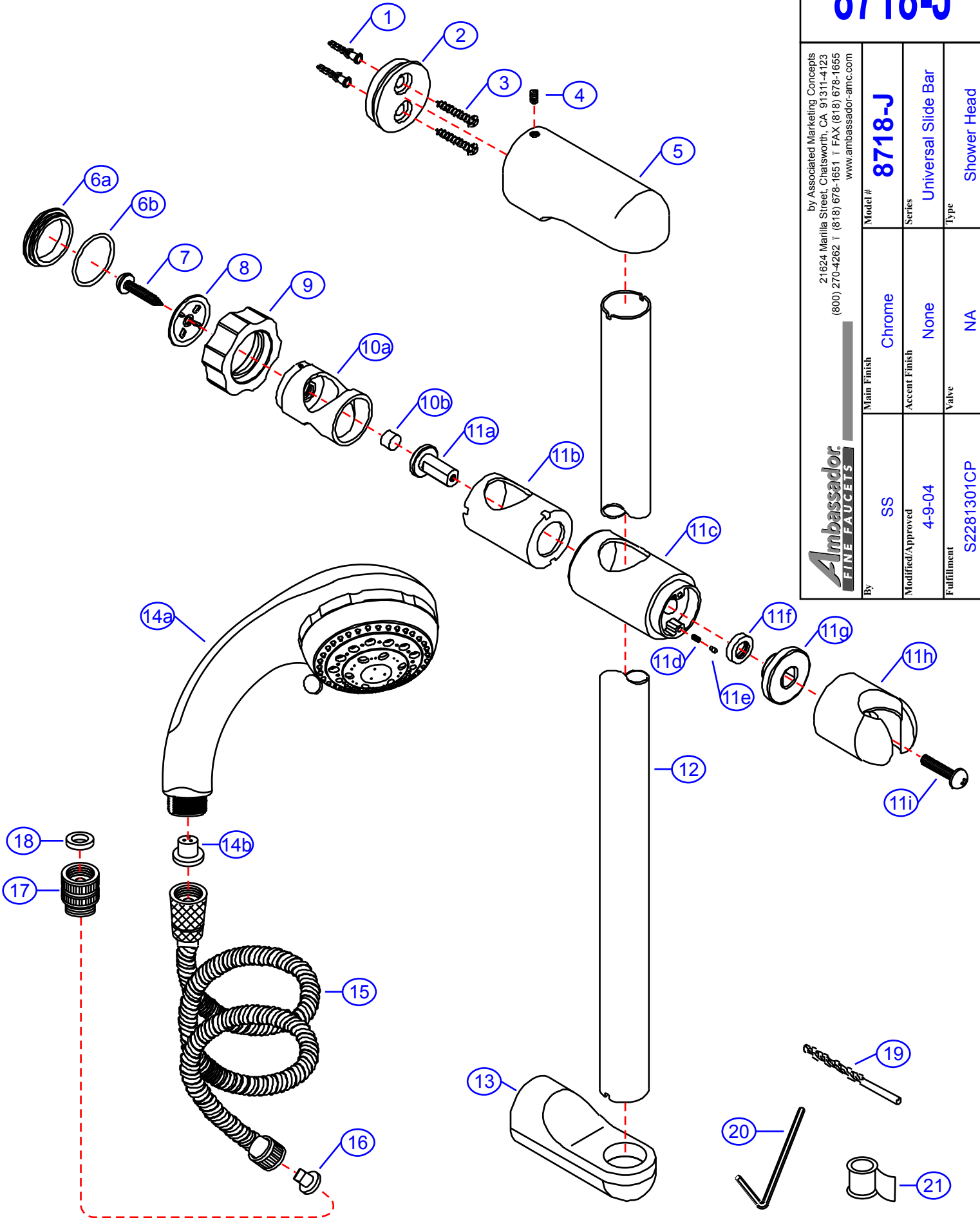


8718-J

by Associated Marketing Concepts
 21624 Marilla Street, Chatsworth, CA 91311-4123
 (800) 270-4262 | (818) 678-1651 | FAX (818) 678-1655
 www.ambassador-amc.com

Ambassador
 FINE FAUCETS

Model #	8718-J		
Series	Universal Slide Bar		
Type	Shower Head		
Main Finish	Chrome	Accent Finish	None
Valve	NA		
By	SS	Modified/Approved	4-9-04
Fulfillment	S2281301CP		



8718-J



Universal Slide Bar- CP

#	Description	Quantity	Part #	Finish
1	Screw Molly	4	E-291001	Plastic
2	Bracket	2	E-112319	Metal
3	Screws	4	E-075094	Metal
4	Set Screw	2	E-008003	Metal
5	Post (Top)	1	E-112046CP	Chrome
6	Cap (Assembled)	1	G-A90722CP	Chrome
6a	Cap	1	E-028085CP*	Chrome
6b	O-Ring	1	E-063008	Rubber
7	Screw	1	E-075095	Metal
8	Disc	1	E-112331	Metal
9	Knob	1	E-069097CP	Chrome
10	Sleeve (Assembled)	1	EA-663751	Plastic
10a	Sleeve	1	E-052010*	Plastic
10b	Friction Pad	1	E-068115*	Rubber
11	Slide Bar Bracket (Assembled)	1	EA-112202CP	Chrome
11a	Adapter	1	E-077109CP*	Chrome
11b	Housing	1	E-032035*	Plastic
11c	Body	1	E-112282CP*	Chrome
11d	Spring	2	E-005024*	Metal
11e	Pin	2	E-003006*	Metal
11f	Washer	1	E-060080	Rubber
11g	Coupler	1	E-112041*	Plastic
11h	Holder	1	E-112281CP*	Chrome
11i	Screw	1	E-008183*	Metal
12	Bar	1	E-025016CP	Chrome
13	Post (Bottom)	1	E-112047CP	Chrome
14	8 Function Hand-Held Massager	1	EA-S2281307CP	Chrome
14a	Massager Head	1	E-537145CP*	Chrome
14b	Water Restrictor	1	E-112301	Rubber
15	Hose	1	E-134036	Hose
16	Anti-Siphon Device	1	E-112313	Rubber
17	Swivel Nut	1	E-112165CP	Chrome
18	Washer	1	E-058007	Rubber
19	Drill Bit	1	E-290483	Metal
20	Allen Key	1	E-031000	Metal
21	Teflon Tape	1	E-203000	Tape

* Grayed parts are not available individually. "Assembled" item required.