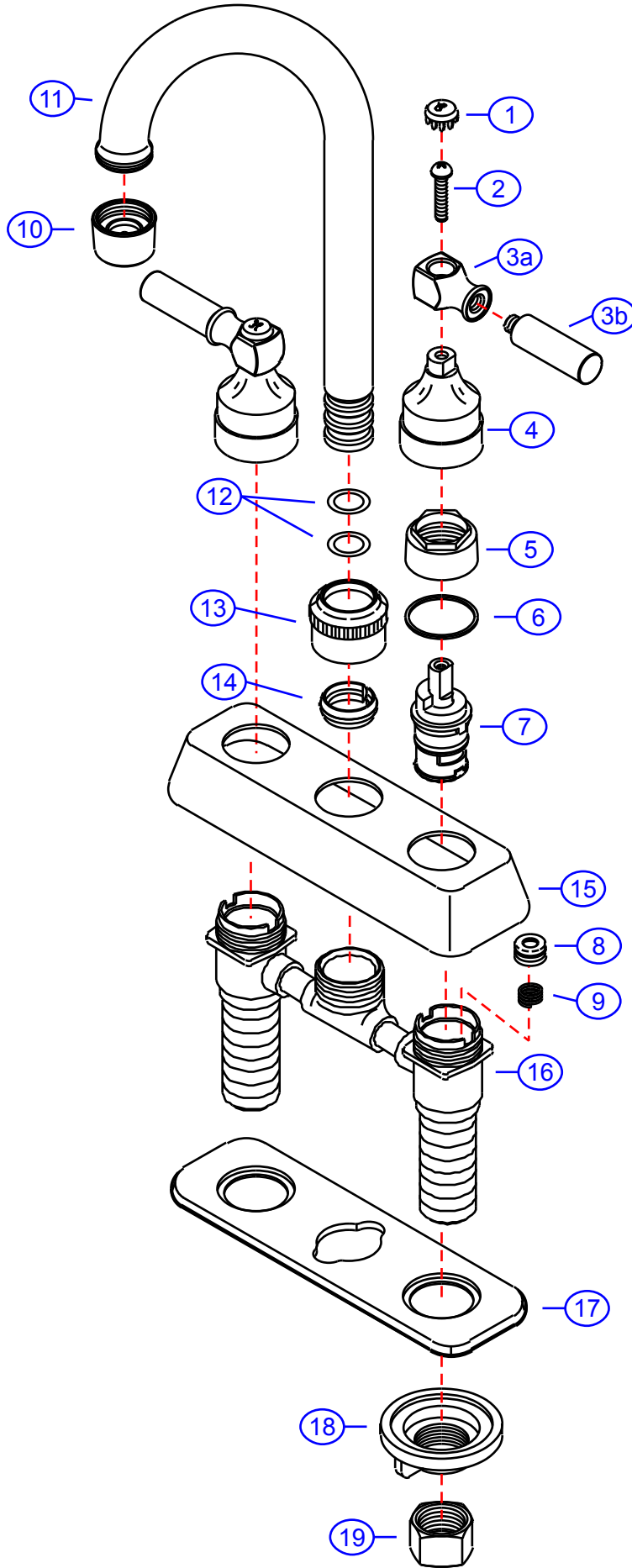


# 317-6500V



by Associated Marketing Concepts  
 21624 Marilla Street, Chatsworth, CA 91311-4123  
 (800) 270-4262 | (818) 678-1651 | FAX (818) 678-1655  
 www.ambassador-amc.com

**Ambassador**  
 FINE FAUCETS

By	SS	Main Finish	Satin	Model #	<b>317-6500V</b>
Modified/Approved	7-7-04	Accent Finish	Chrome	Series	Bar-Lever
Fulfillment	xxxxSC	Valve	Standard (Washerless)	Type	Wet Bar

# 317-6500V



## Bar-Lever Wet Bar- Std/SC

#	Description	Quantity	Part #	Finish
1	Cap "H"	1	E-206041HST	Satin
	Cap "C"	1	E-206041CST	Satin
2	Handle Screw	2	E-008037CP	Chrome
3	Handle (Assembled)	2	EA-662048CP	Chrome
3a	Handle Head	2	E-107047CP*	Chrome
3b	Handle Tip	2	E-552030CP*	Chrome
4	Handle Canopy (Hot)	1	E-018027HST	Satin
	Handle Canopy (Cold)	1	E-018027CST	Satin
5	Retainer Nut	2	E-016002CP	Chrome
6	Packing Ring	2	E-200013	Plastic
7	Cartridge	2	E-507006N	Plastic/Brass
8	Seat	2	E-101000N	Rubber
9	Spring	2	E-005000	Metal
10	Aerator	1	E-500012NCP	Chrome
11	Spout	1	E-100036NST	Satin
12	O-Ring	2	E-004005N	Rubber
13	Bonnet	1	E-000004ST	Satin
14	Packing Ring	1	E-012003	Plastic
15	Cover Plate	1	E-007015ST	Satin
16	Valve Body	1	E-002054N	Brass
17	Gasket	1	E-011018	Plastic
18	Thumb Nut	2	E-009007	Plastic
19	Connector Nuts	2	E-009016	Brass

\* Grayed parts are not available individually. "Assembled" item required.

by Associated Marketing Concepts  
21624 Marilla Street, Chatsworth, CA 91311-4123  
(800) 270-4262 \* (818) 678-1651 \* FAX (818) 678-1655  
www.ambassador-amc.com